



# Center

Object number: GRÄK10

[View and rent online](#)

Located in Vienna's 2nd district, Apartment Center is located just 1 km from the famous St. Stephen's Cathedral. Many bars and cafes can be visited in the Schwedenplatz region in 5-min. walk. To Undergroundstation Schwedenplatz its a 5 min walk.

|                          |                     |
|--------------------------|---------------------|
| <b>Period</b>            | 17/04/ - 17/05/2026 |
| <b>Number of persons</b> | 2                   |
| <b>Total incl. VAT.</b>  | € 910,84            |
| Deposit                  | € 700,00            |

**Living space**31m<sup>2</sup>**Maximum occupancy**

2 Persons

**Complete accommodation**

1 private bathroom 1 Living-Sleepingroom

**6. floor**

Elevator available

**Check-in**

14:00 - 00:00

**Check-out**

14:00 - 00:00

## Sleeping options

### Living and sleeping

1x Double bed (min. 1,60 m x  
2 m)

1x Sofa bed (1 person)

## Descripton of accommodation

The Ferdinandstrasse studio has modern furnishings and comes with a kitchenette, dining area, bathroom, washing machine, seating area. Wi-Fi is available free of charge.

The closest tram and metro stations are a 2-minute walk away. Shops, the Stadtpark park and the Prater park can be reached on foot in 15 minutes or less.

This is our guests' favourite part of Vienna, couples particularly like the location.

### Equipment & Features

#### Basic equipment

- Internet/Wifi
- Bedclothes
- Private toilet
- Cleaning utensils
- Private washing machine
- Towels
- Iron & ironing board
- Hairdryer

#### First supply

- Toilet paper

#### Kitchen

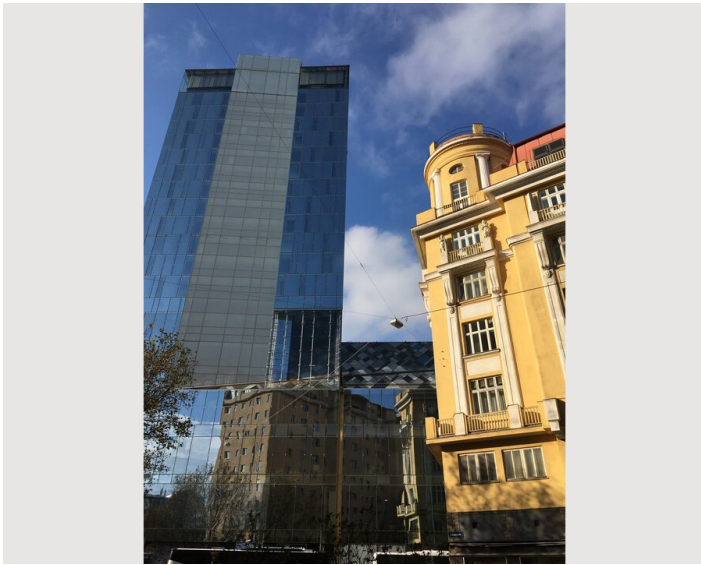
- Kitchenette
- Glasses/Tableware
- Microwave
- Cooking utensils
- Filter coffee

### Informations

- Suitable for construction workers
- Smoking not allowed
- Private entrance
- Regular cleaning at extra cost
- Suitable for children
- Short-term parking zone subject to a charge
- Pets on request

## Picture gallery





## Infrastructure

- ⊙ To Undergroundstation Schwedenplatz its a 5 min walk. To St. Stephens cathedral a 10 min. walk.

The studio is located right within Viennas most favored restaurant - zone. From the nearby Donaukanal ships leave to Bratislava and Budapest and danube - excursions can be booked. A couple of nearby restaurants are located on boats.

## Location

