



STUDIO APARTMENT, 1030 VIENNA

## Palace Belvedere Green Heart

Object number: MARA4

[View and rent online](#)

The rent price is all inclusive which includes: high speed internet, utilities, furniture, a closet, and a washing machine. The fully furnished apartment and high speed internet allow you to work from home.

<b>Period</b>	28/06/ - 28/07/2026
<b>Number of persons</b>	2
<b>Total incl. VAT.</b>	€ 1.317,87
<b>Deposit</b>	€ 1.000,00



### Living space

32m<sup>2</sup>



### Maximum occupancy

4 Persons



### Complete accommodation <sup>?</sup>

1 private bathroom 1 Living-Sleepingroom



### 2. floor

Elevator available



### Check-in

15:00 - 04:00



### Check-out

15:00 - 04:00

## Sleeping options

### Living and sleeping



1x Double bed (min. 1,80 m x  
2 m)



1x Sofa bed (2 persons)

## Descripton of accommodation

Beautiful cosy and renovated apartment 5 min from famous Belvedere Palace and Botanical Garden. only 7 min by tram to center and 22 min to the airport by suburban train.

Very stylish and warm design with big new box spring bed and all amenities. High ceilings keep it cool in summer.

Quiet, and safe as windows are facing the inyard.

The building has an elevator and the high ceilings in the apartment make it feel very spacious and always keep it cool in summer and warm in winter.

Cleaning Fee: 55€ (one time)

## Equipment & Features



### Basic equipment

- Internet/Wifi
- Private washing machine
- Towels
- Vacuum cleaner
- Cleaning utensils
- TV
- Bedclothes
- Private toilet
- Iron & ironing board
- Hairdryer



### First supply

- Toilet paper
- Soap
- shampoo



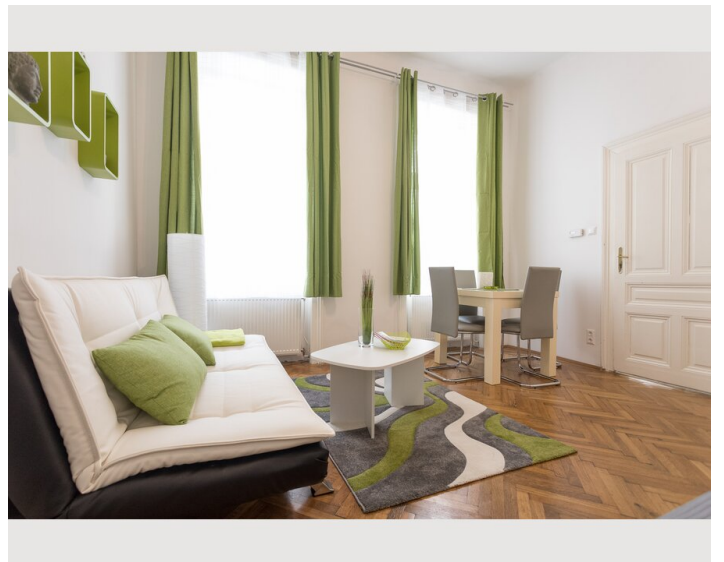
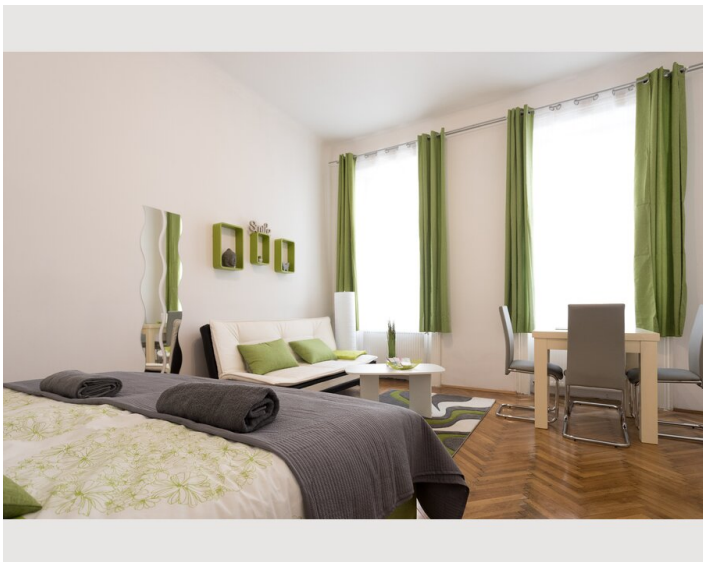
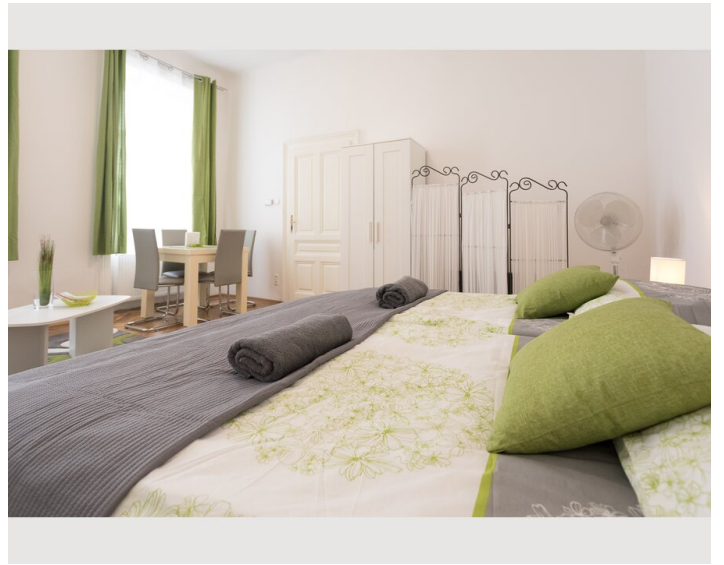
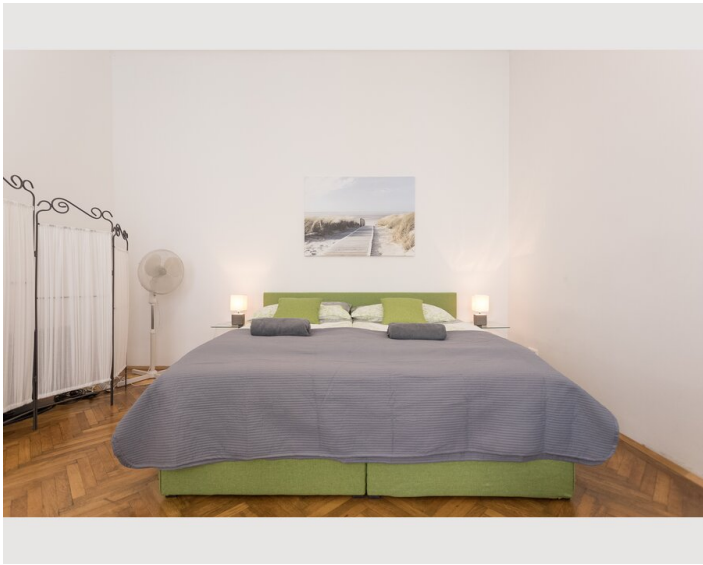
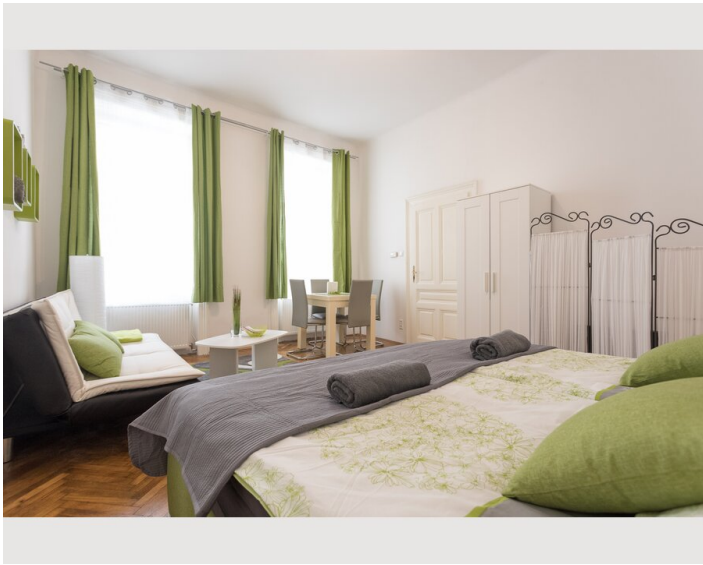
### Kitchen

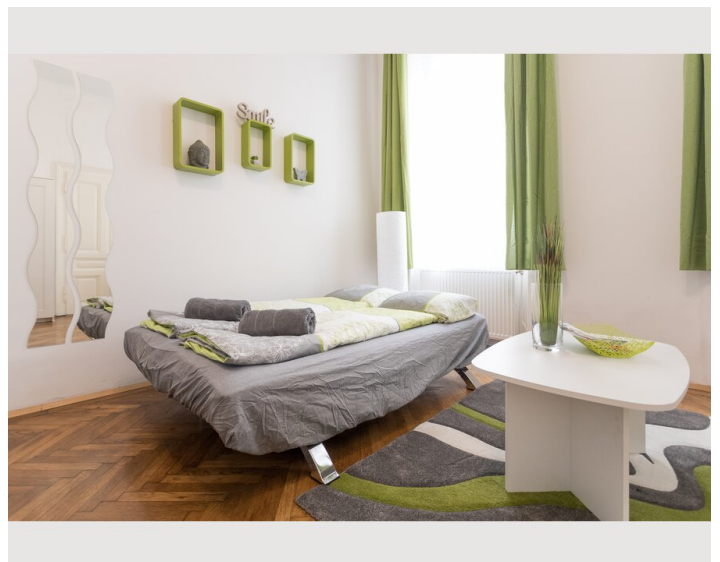
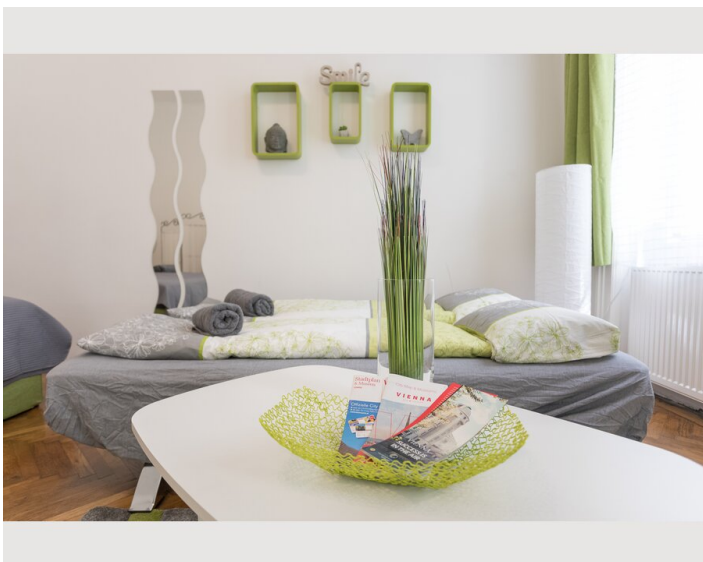
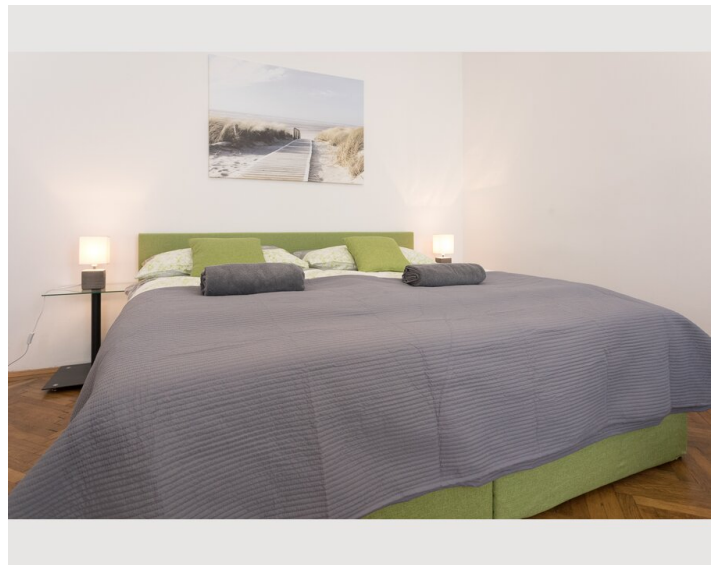
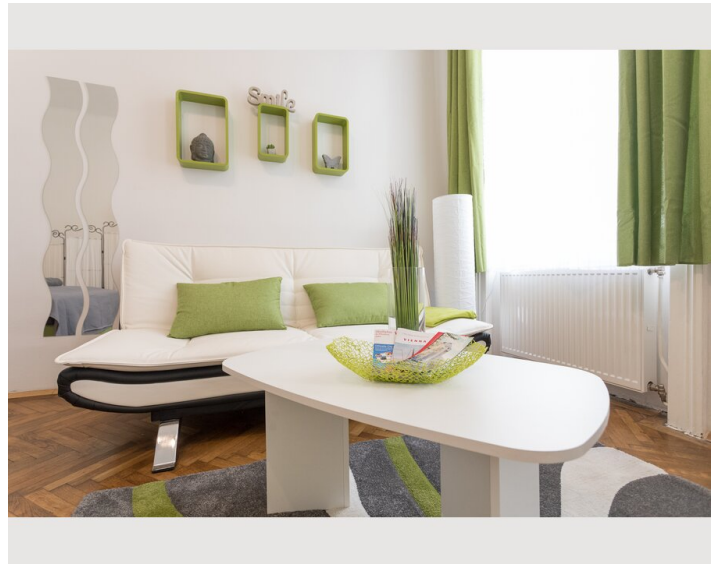
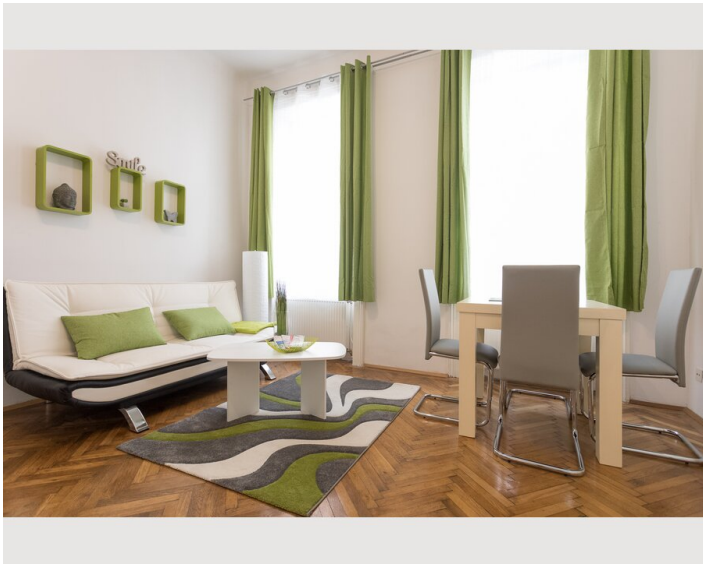
- Private kitchen
- Glasses/Tableware
- Microwave
- Cooking utensils
- Filter coffee

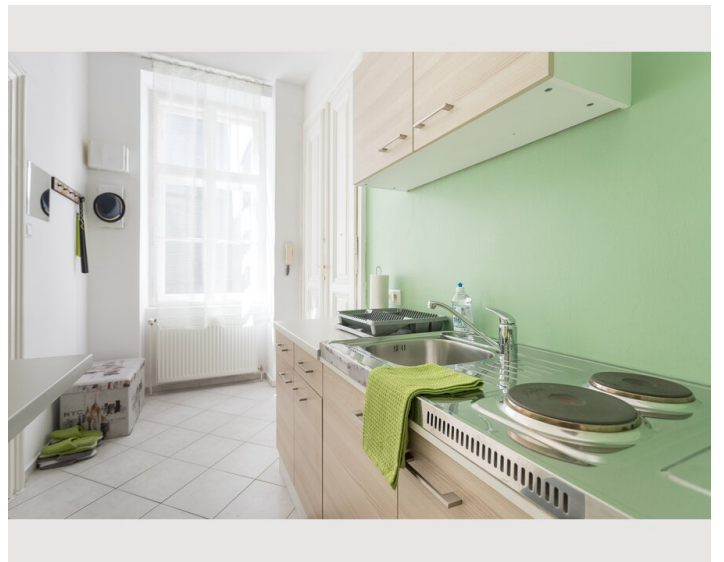
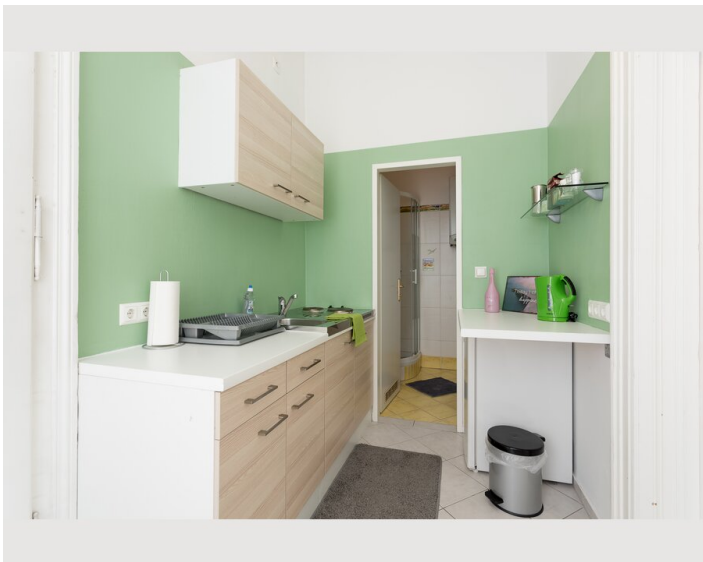
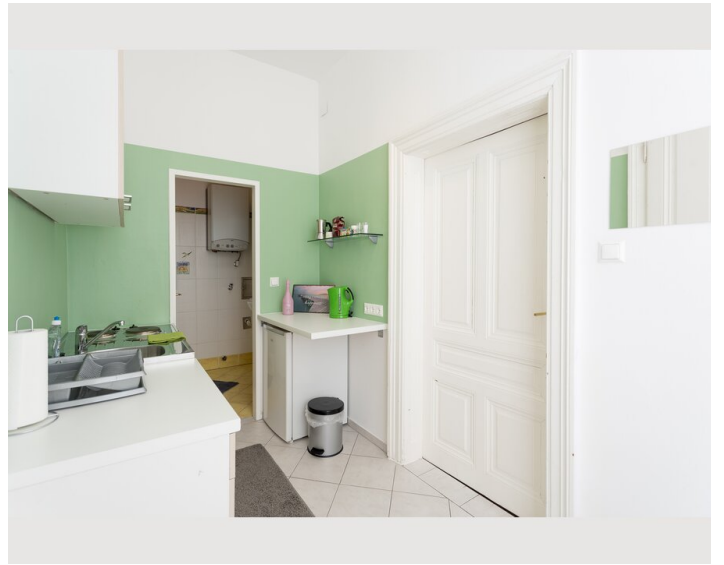
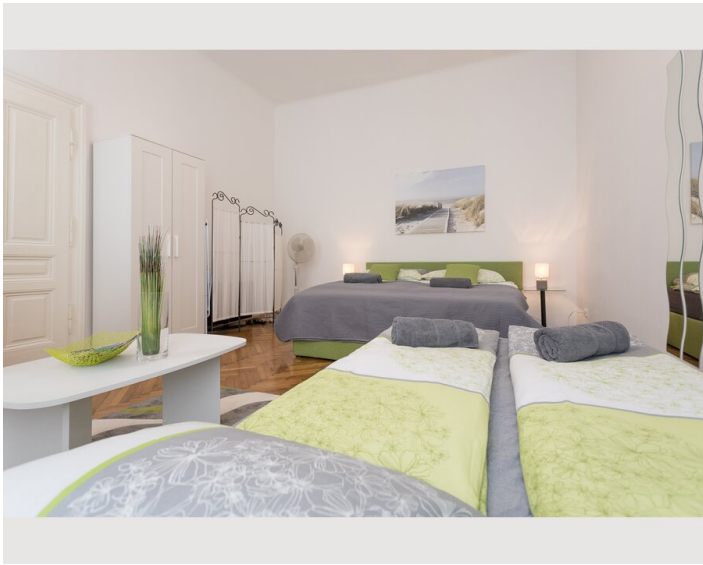
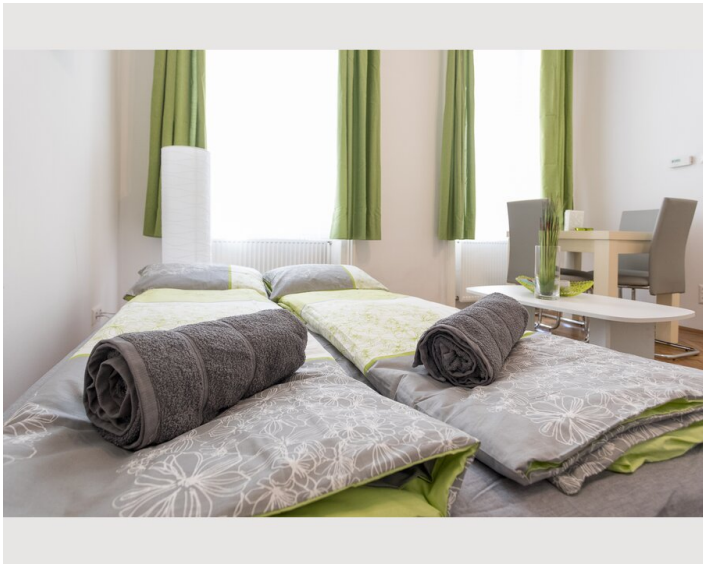
## Informations

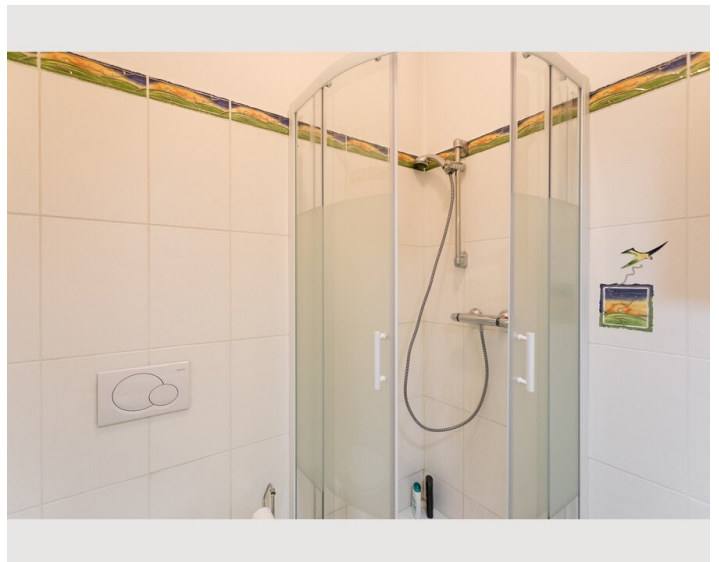
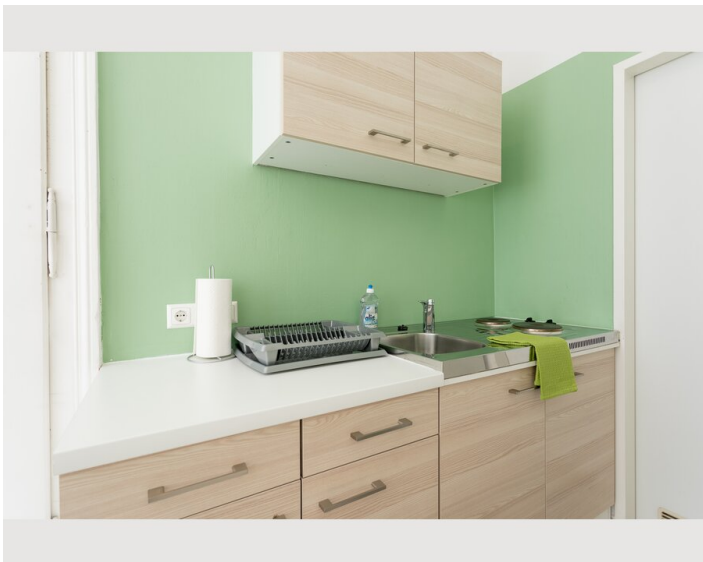
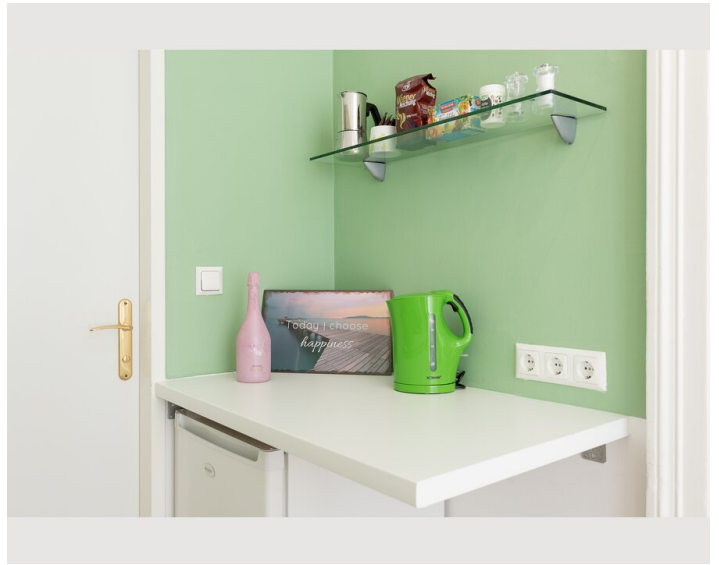
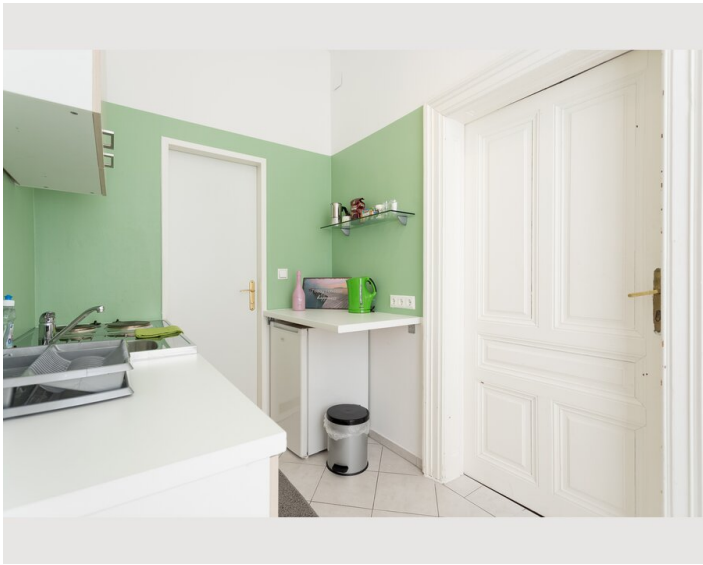
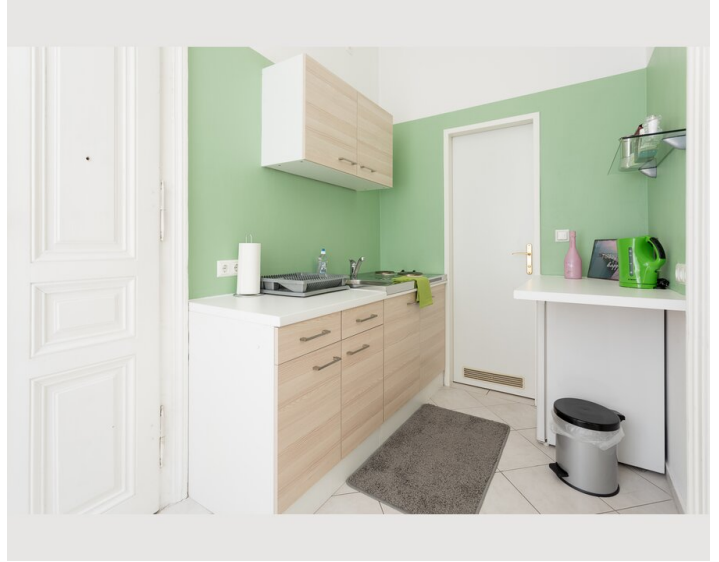
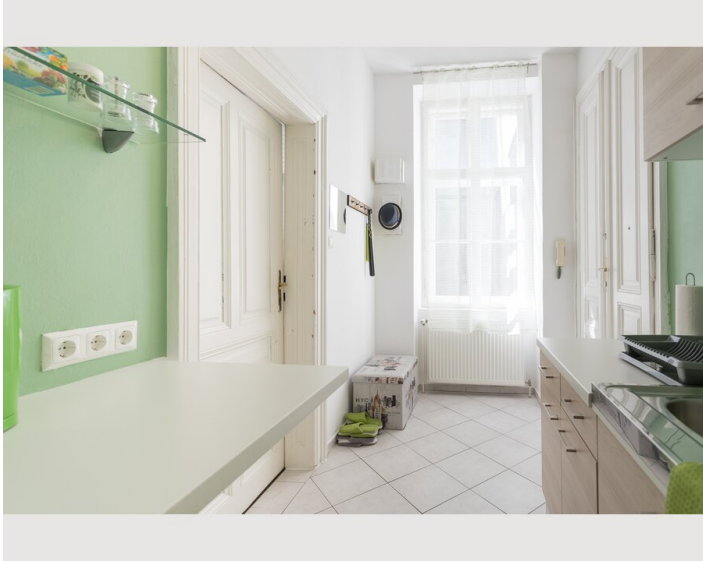
- Suitable for construction workers
- Smoking not allowed
- Desk/Workplace
- Pets on request
- Bicycle room free of charge
- Suitable for children
- Short-term parking zone subject to a charge
- Private entrance
- Regular cleaning at extra cost

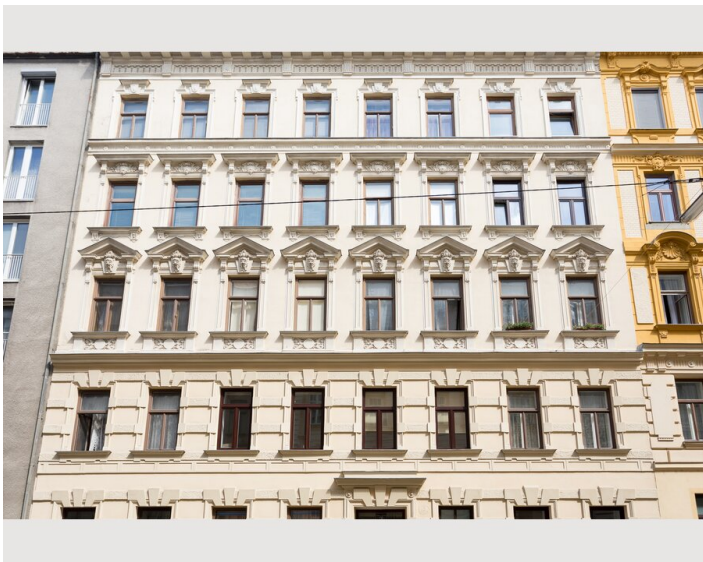
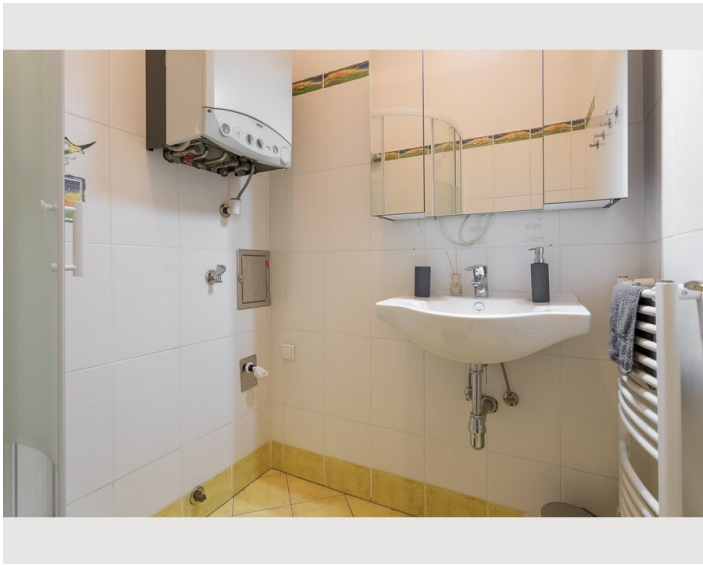
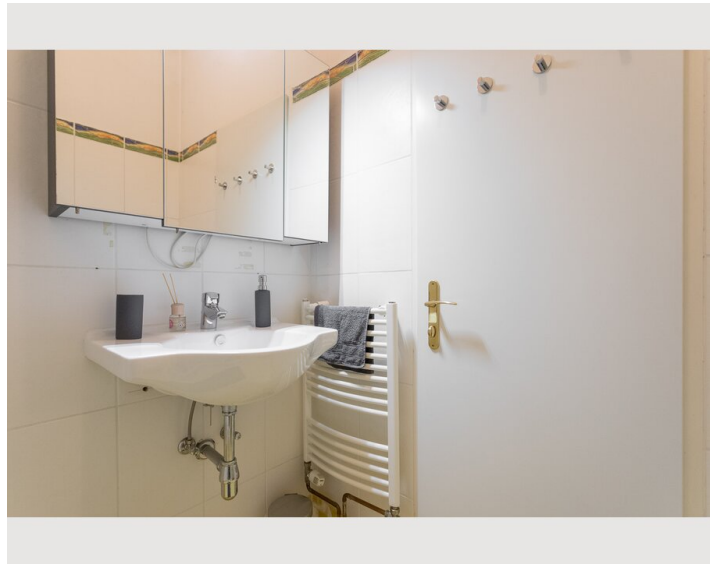
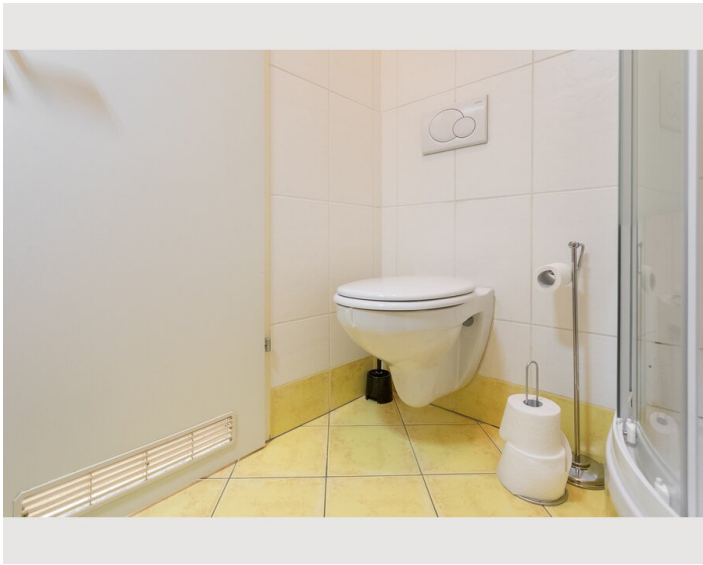
## Picture gallery











## Infrastructure



Suburban lines at station "Rennweg" just 5 min walk



Direct line to airport (S7 train) and other trains to center (Rennweg, Wien Mitte, Praterstern)

Very centrally located, near Wien Mitte (Cat airport transport)

Supermarket: 200 meters

Drugstore: 100 meters

## Location

