



STUDIO APARTMENT, 1010 VIENNA

## Apartment Central Park

Object number: GOLS2

[View and rent online](#)

<b>Period</b>	27/06/ - 27/07/2026
<b>Number of persons</b>	2
<b>Total incl. VAT.</b>	€ 1.723,24
Deposit	€ 1.400,00

This spacious apartment is 100 meters from the Stubentor underground station on the U3 line, in the Wollzeile shopping street in downtown Vienna. Free WiFi is available. The Landstraße-Wien Mitte Train and Underground Station, with direct connections



### Living space

45m<sup>2</sup>



### Maximum occupancy

2 Persons



### Complete accommodation <sup>?</sup>

1 private bathroom 1 Living-Sleepingroom



### 2. floor

Elevator available



### Check-in

13:00 - 21:00



### Check-out

13:00 - 21:00

## Sleeping options

### Living and sleeping



1x Double bed (min. 1,80 m x 2 m)

## Description of accommodation

The apartment has a bedroom facing the quiet inner courtyard, a fully equipped kitchen, a dining area, a living area with a flat-screen cable TV and a separate toilet and bathroom with a bathtub.

### Equipment & Features



#### Basic equipment

- Internet/Wifi
- Private washing machine
- Towels
- Private parking space
- Vacuum cleaner
- Hairdryer
- TV
- Bedclothes
- Private toilet
- Garage
- Iron & ironing board



#### First supply

- Toilet paper
- Soap



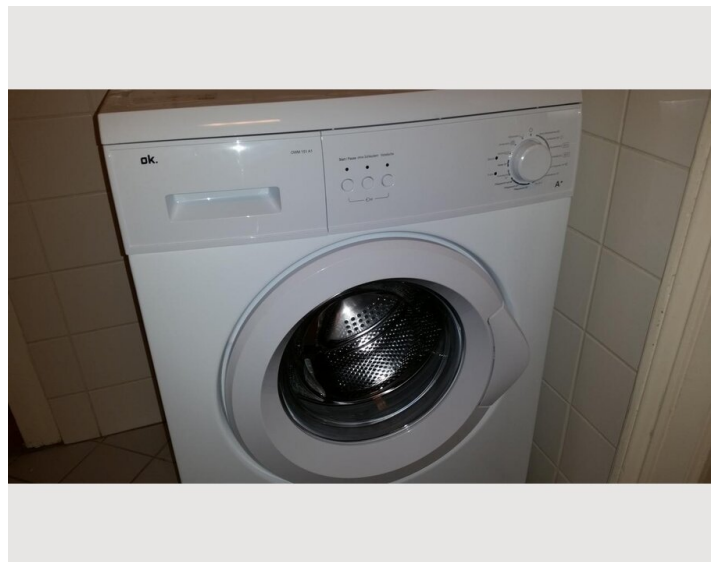
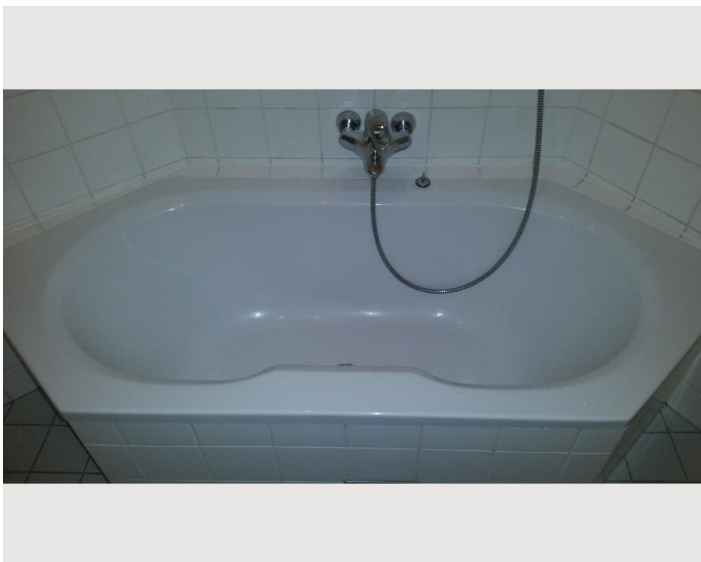
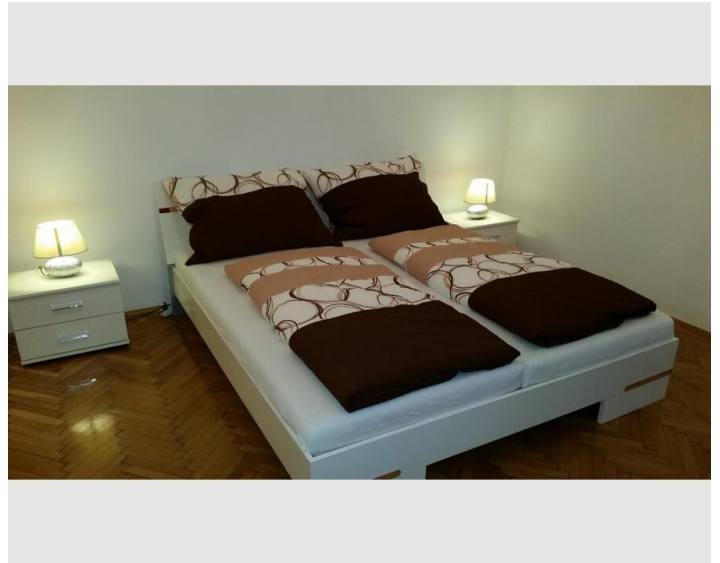
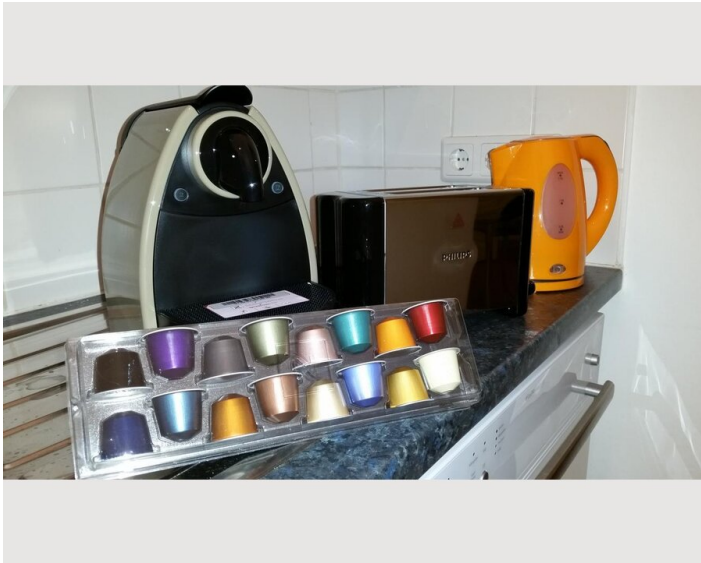
#### Kitchen

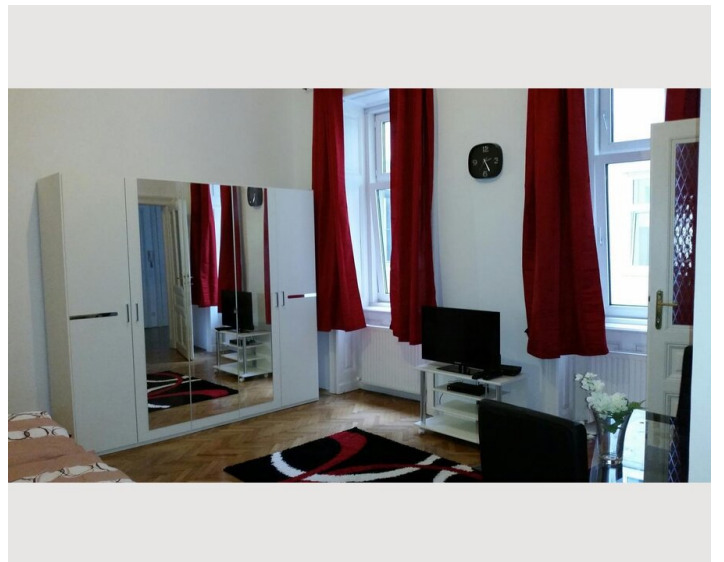
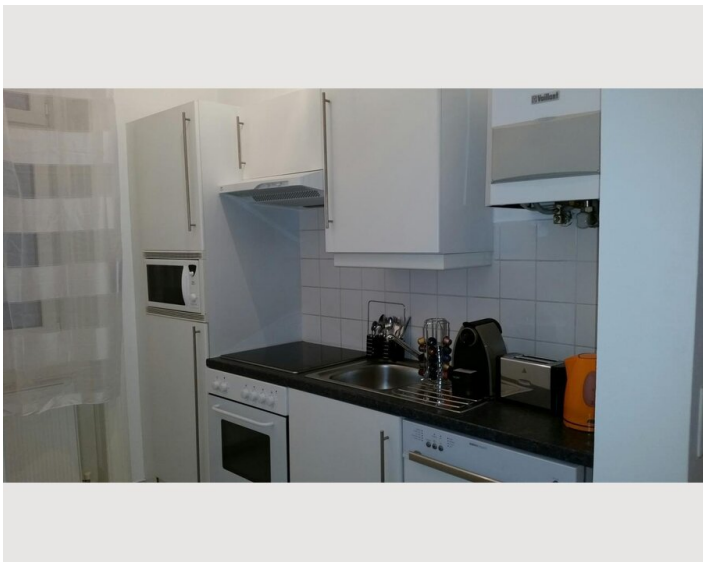
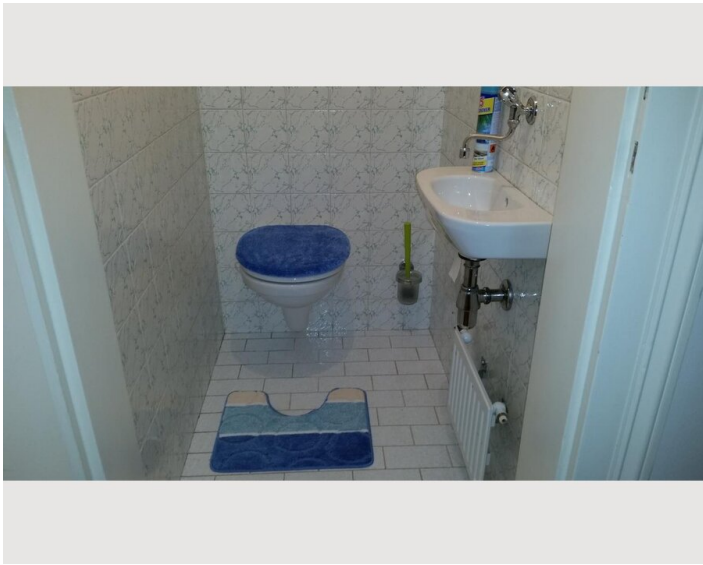
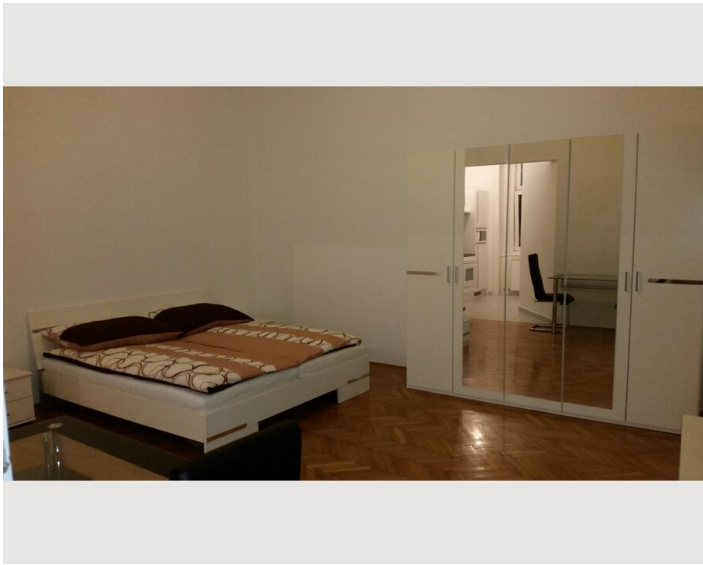
- Private kitchen
- Glasses/Tableware
- Dishwasher
- Cooking utensils
- Coffee machine
- Microwave

## Informations

- Suitable for construction workers
- Smoking not allowed
- Private entrance
- Regular cleaning at extra cost
- Not suitable for children
- Short-term parking zone subject to a charge
- Pets on request

## Picture gallery





## Infrastructure



This accommodation is located in the heart of Vienna, which is accessible from numerous shops, restaurants, cafes, bars as well as the well-known city park, sights, CAT City Train from the airport directly to the apartment in a few minutes on foot, underground and tram station

## Location

