



3 ROOM APARTMENT, 1180 VIENNA

85 m² Leitermayergasse

Object number: MRTB1

[View and rent online](#)

Period	18/04/ - 18/05/2026
Number of persons	2
Total incl. VAT.	€ 2.038,28
Deposit	€ 1.600,00

3 rooms, 1 bathroom, 85 m² 15 Min. to 1st district Tram in 200Meters (Metro 1 station with tram)- U6 AKH 3 bedrooms with double bed + sofa bed Kitchen WLAN 125 Mbits/s, Cable TV (150 channels) Washing machine



Living space

85m²



Maximum occupancy

7 Persons



Complete accommodation [?]

1 private bathroom 3 Separated bedrooms



2. floor

Elevator available



Check-in

16:00 - 23:55



Check-out

16:00 - 23:55

Sleeping options

Bedroom 1



1x Double bed (min. 1,80 m x
2 m)



1x Children/baby bed

Bedroom 2



1x Double bed (min. 1,80 m x
2 m)



1x Sofa bed (2 persons)

Bedroom 3



1x Double bed (min. 1,40 m x
2 m)

Descripton of accommodation

This apartment has a bedroom with a double bed (180cm wide), another living room / bedroom with a double bed (180cm wide) and an additional sofa bed with a smaller double bed (120cm wide). There is also a fully equipped kitchen, a bathroom with bathtub and toilet, and a spacious entrance area.

Due to the location in a one-way street with little traffic, the apartment is very quiet.

Of course, the apartment is fully equipped and leaves nothing to be desired:

High-speed WiFi (125Mbits / s)

Cable TV (150+ channels)

Dishwasher, washing machine, coffee machine, microwave, etc.

Equipment & Features

Basic equipment

- Internet/Wifi
- Private washing machine
- Towels
- Vacuum cleaner
- Cleaning utensils
- TV
- Bedclothes
- Private toilet
- Iron & ironing board
- Hairdryer

First supply

- Toilet paper
- Soap
- shampoo

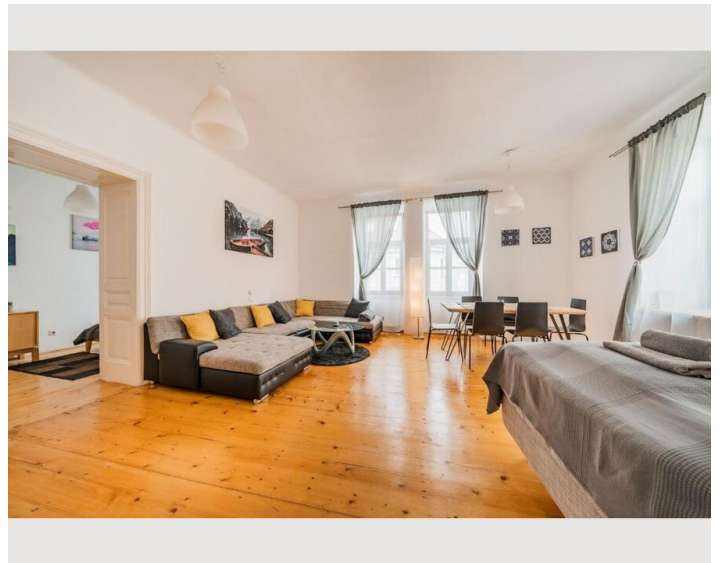
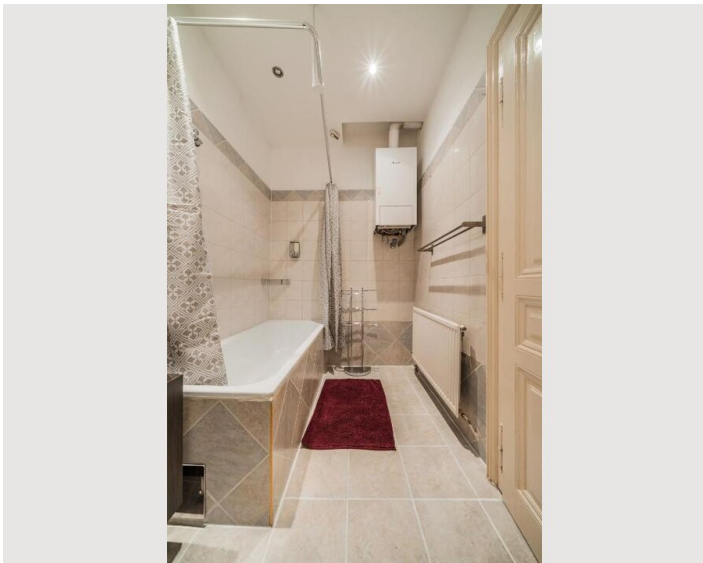
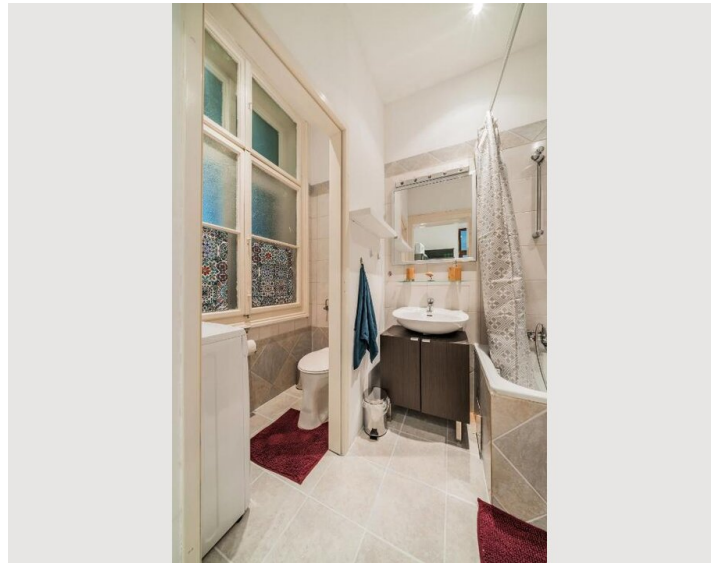
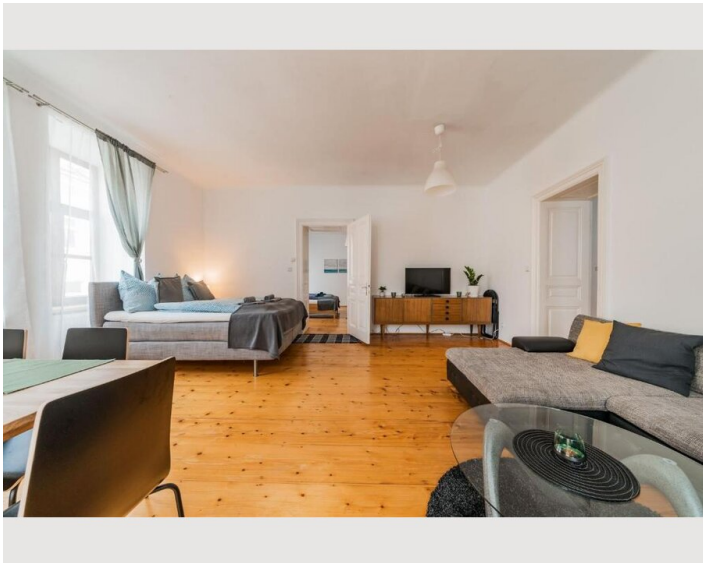
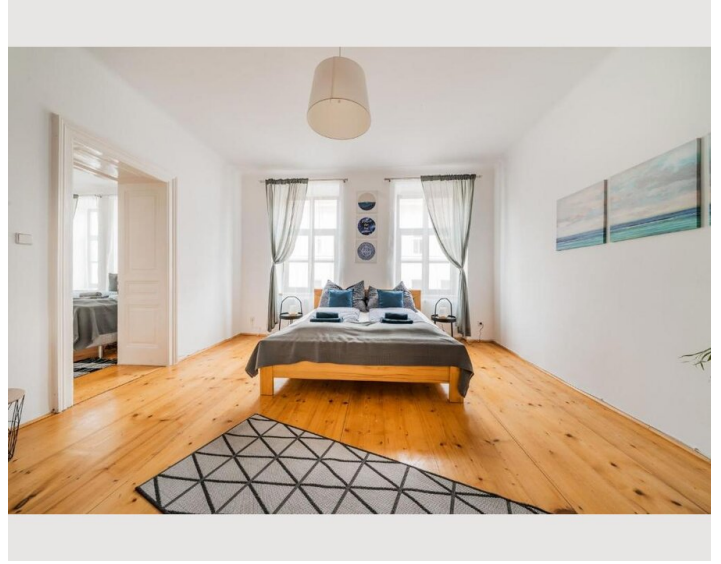
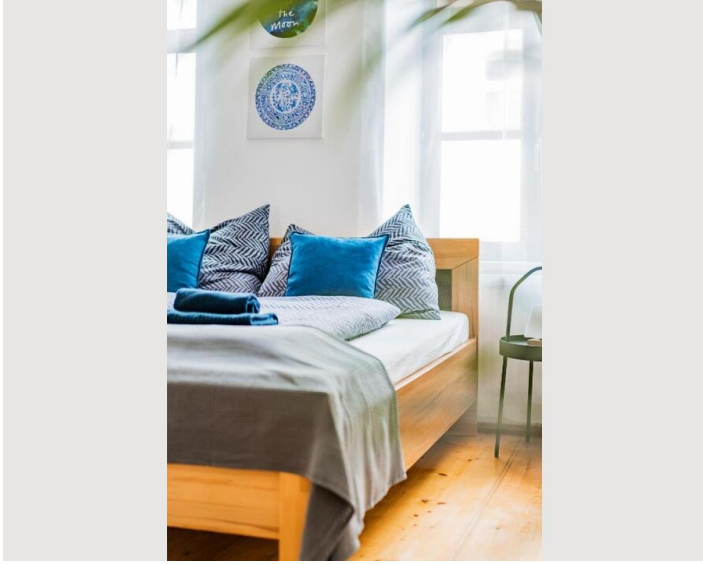
Kitchen

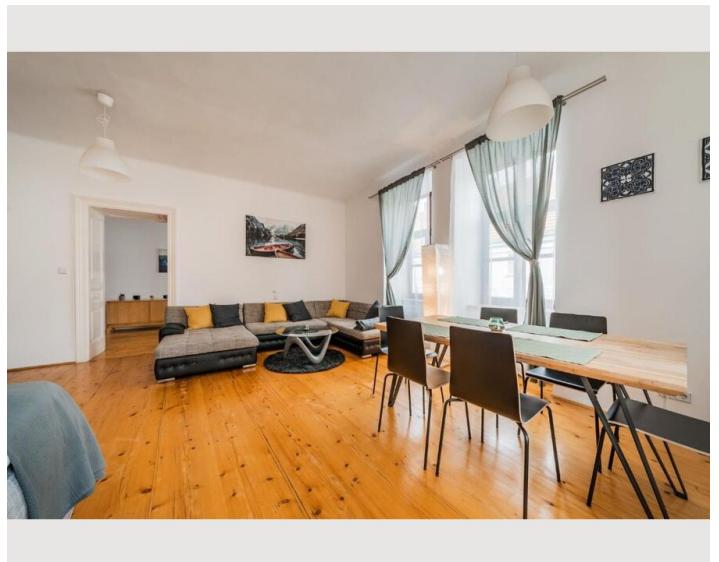
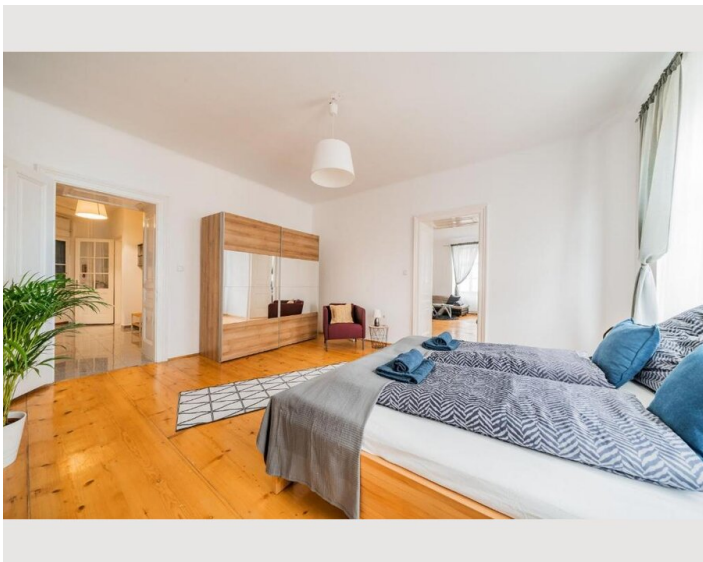
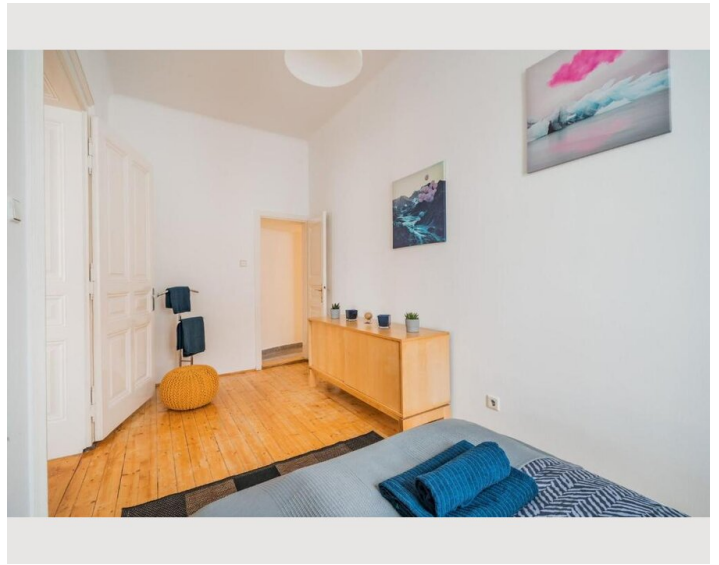
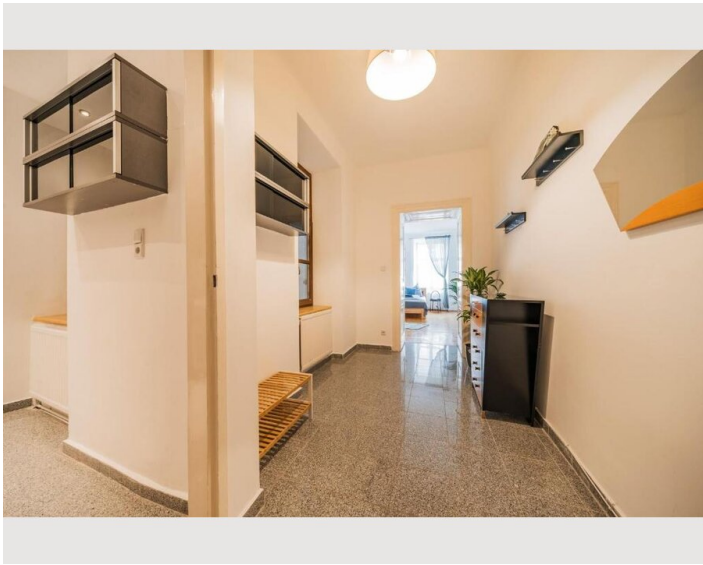
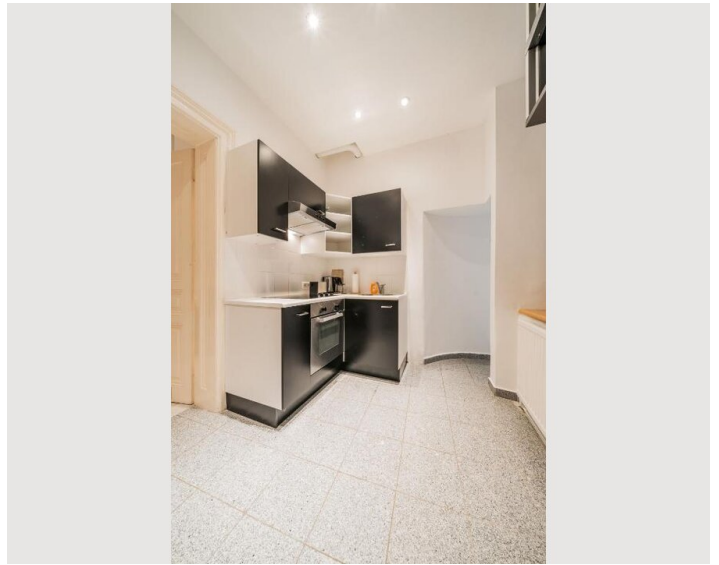
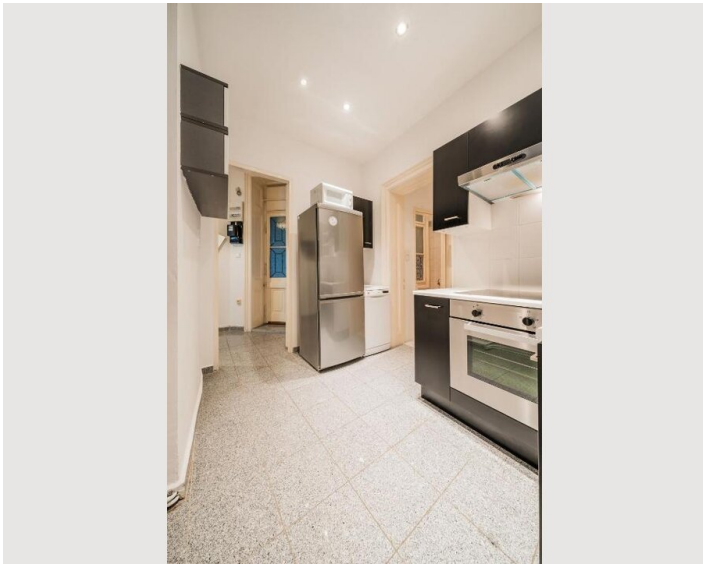
- Private kitchen
- Glasses/Tableware
- Microwave
- Cooking utensils
- Dishwasher

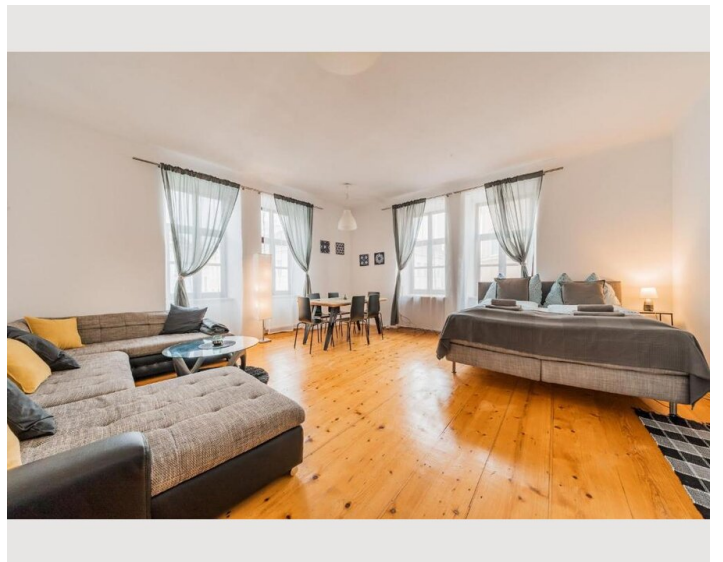
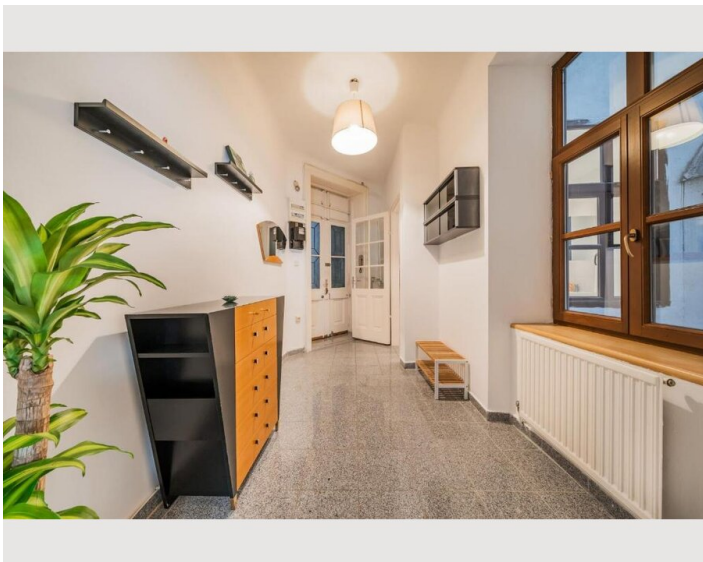
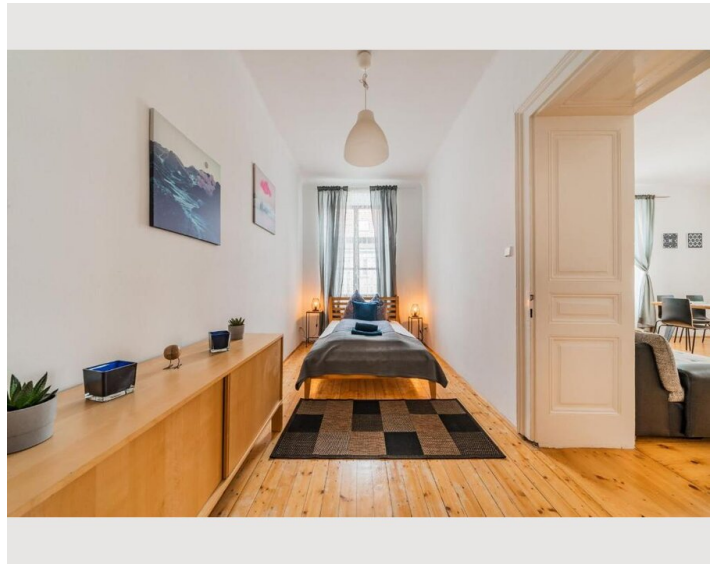
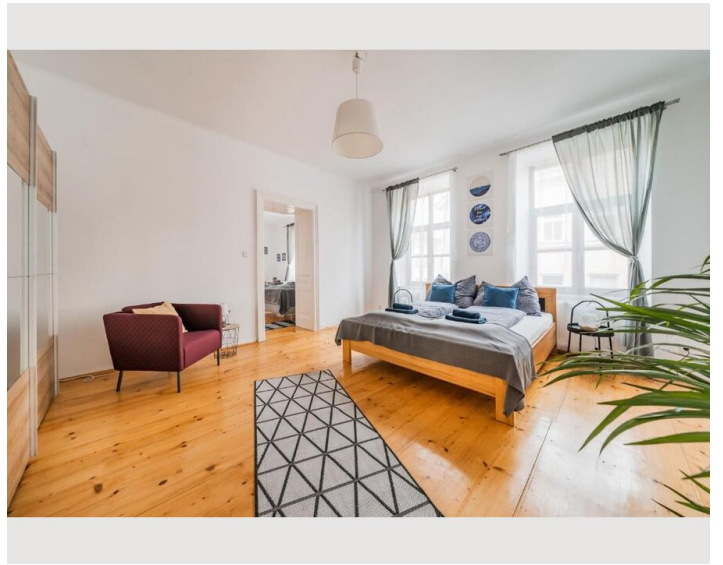
Informations

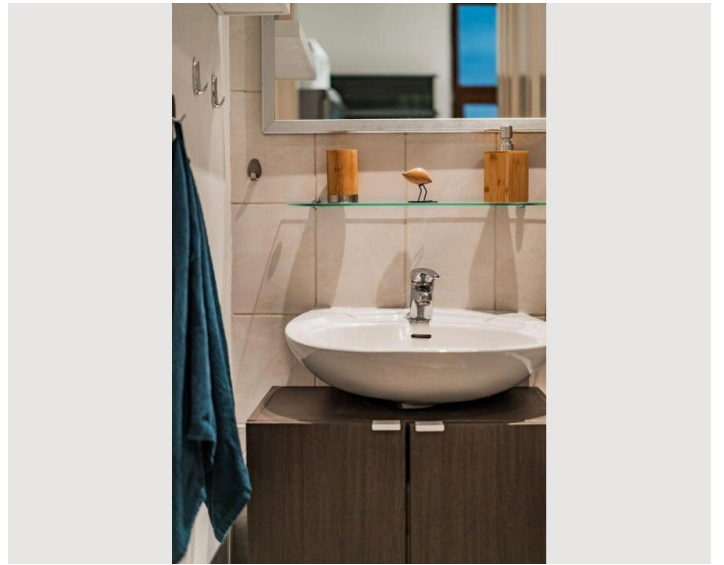
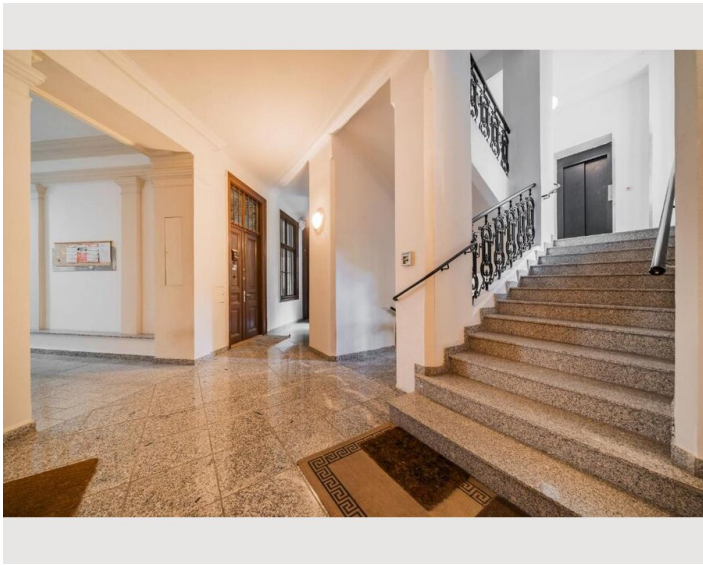
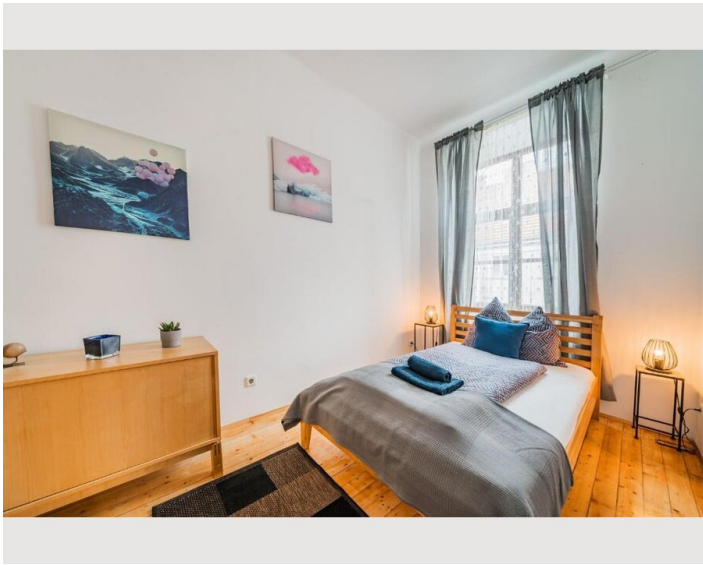
- Suitable for construction workers
- Smoking not allowed
- Private entrance
- Regular cleaning at extra cost
- Suitable for children
- Short-term parking zone subject to a charge
- Pets forbidden

Picture gallery









Location

