



STUDIO APARTMENT, 5020 SALZBURG

South-facing apartment

Object number: MAYJ2

[View and rent online](#)

Period	27/06/ - 27/07/2026
Number of persons	2
Total incl. VAT.	€ 1.292,96
Deposit	€ 1.000,00



Living space

40m²



Maximum occupancy

2 Persons



Complete accommodation [?]

1 private bathroom 1 Living-Sleepingroom



Ground floor

Elevator available

Sleeping options

Living and sleeping



1x Single bed



1x Sofa bed (2 persons)



2x Bunk bed

Description of accommodation

South-facing apartment for 2 people for rent. The flat is close to the Salzach; large living room, modern kitchen, bathroom and antechamber. The Salzach - cycleway and the train station, as well as the very close bus stop characterize the particular location of the apartment. The fitness studio John Reed is located in the house!

Community Utility: Washer, Dryer, Wheel Room; A lift is also available. Particularly suitable for students, (lesson) students, Erasmus and foreign language assistants.

Equipment & Features



Basic equipment

- Balcony
- Community washing machine
- TV
- Towels
- Private toilet
- Dryer
- Internet/Wifi
- Bedclothes



Kitchen

- Private kitchen
- Coffee machine
- Dishwasher
- Glasses/Tableware

Informations

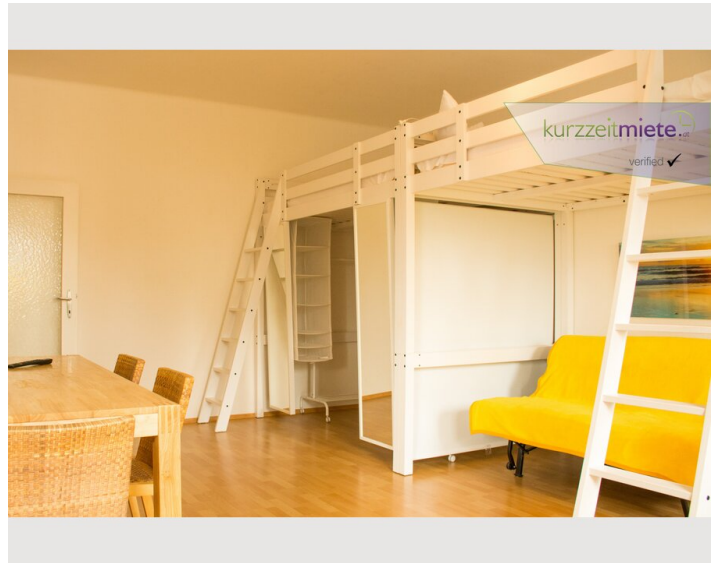
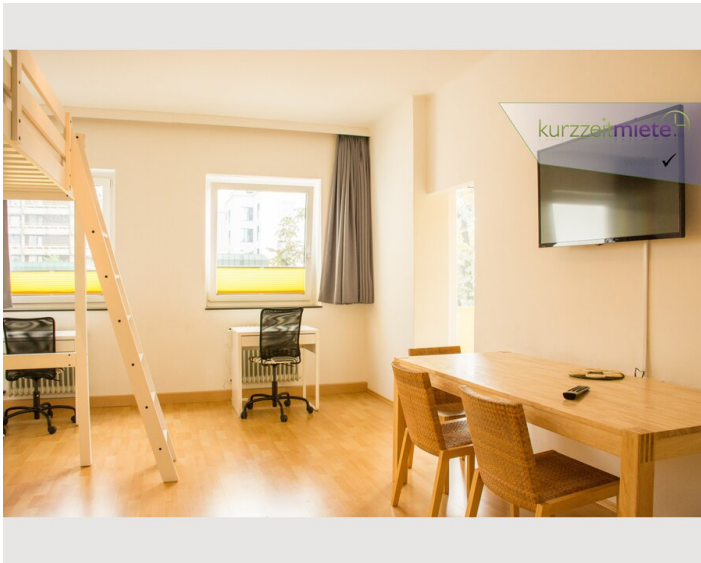
- Smoking not allowed
- Short-term parking zone subject to a charge
- Pets forbidden

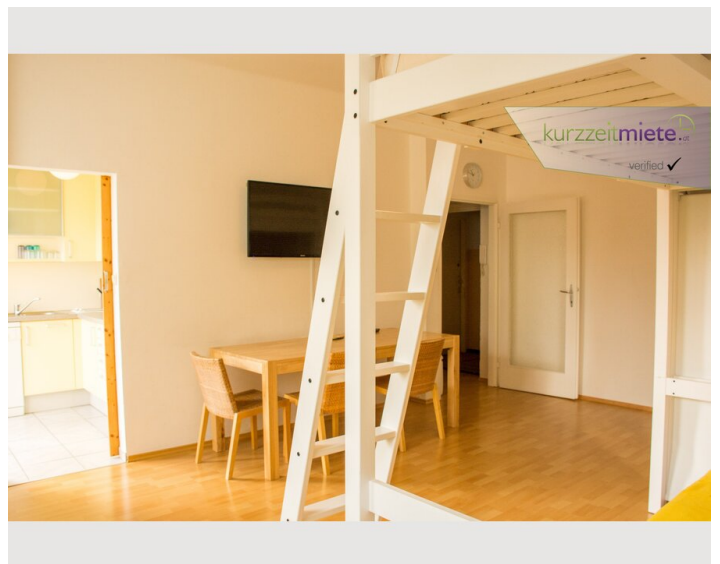
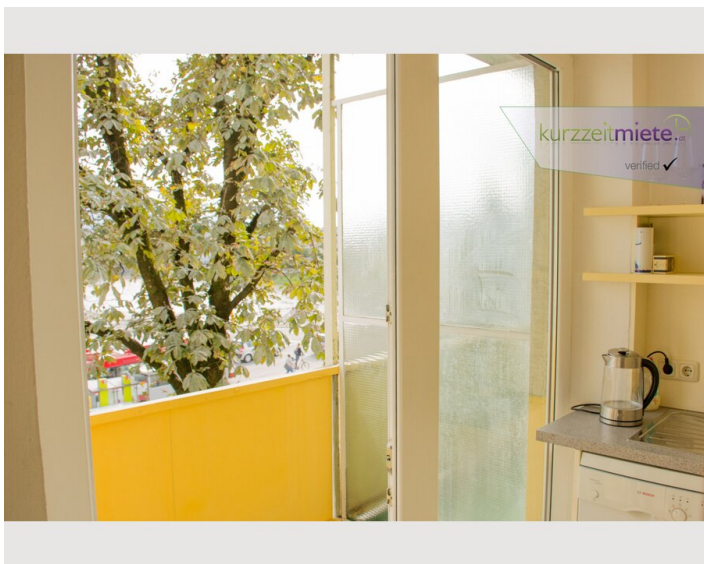
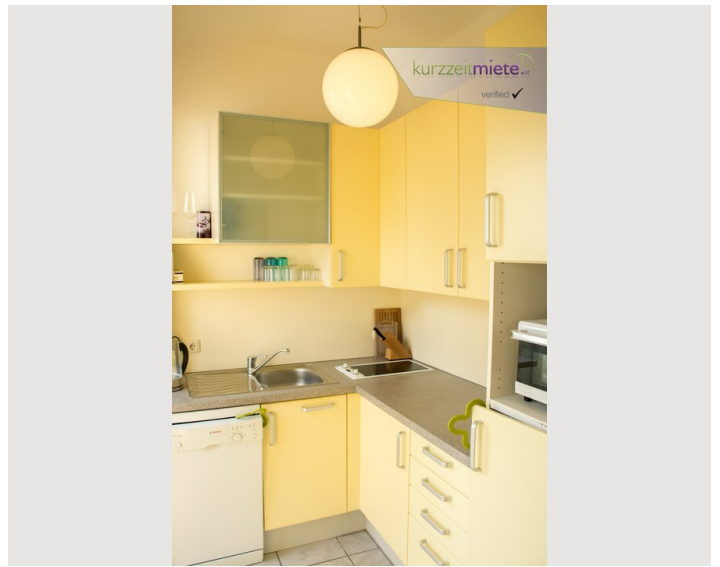
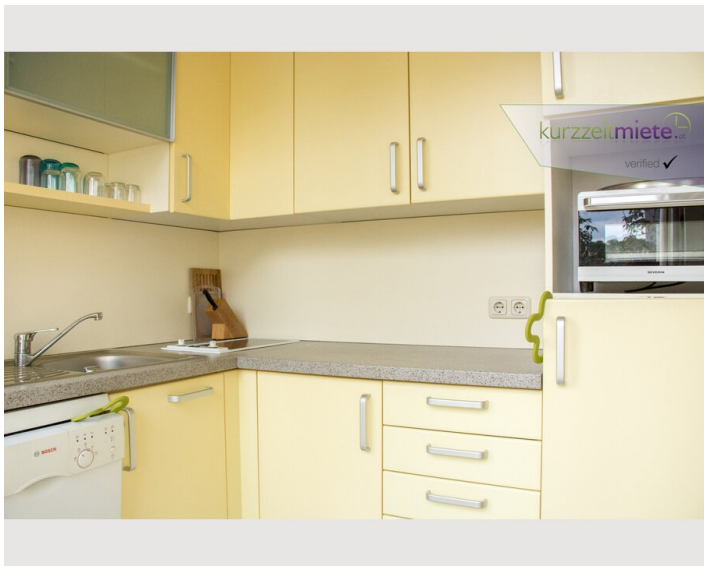
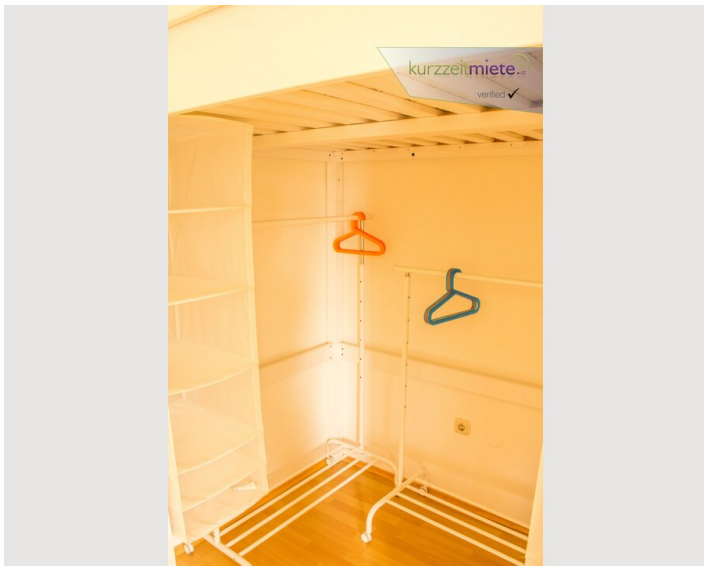
Additional services

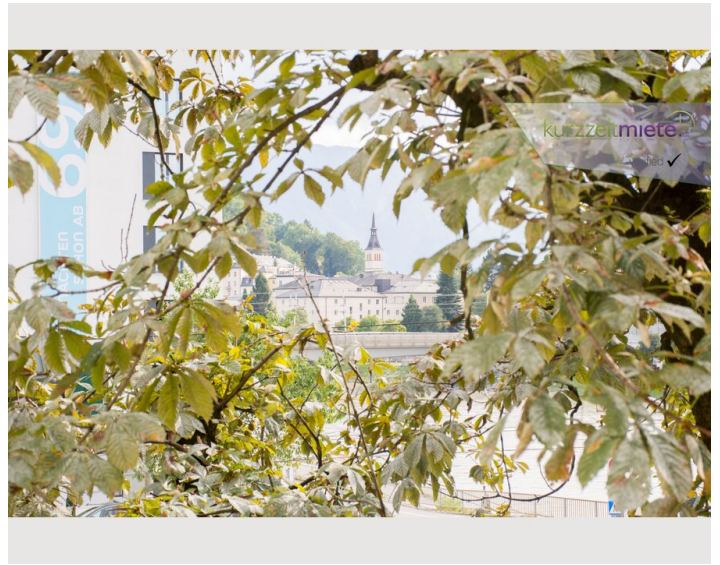
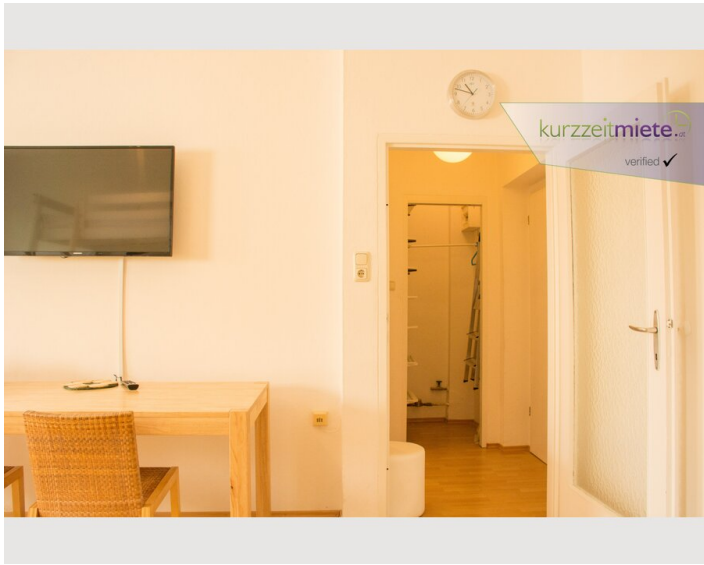
- Regular cleaning

All prices are gross per month - billing is done directly with the lessor.

Picture gallery







Location

