

3 ROOM APARTMENT, 1040 VIENNA

central 100m2 apartment with view over Vienna

Object number: REIH1

[View and rent online](#)

100 m2, 2 rooms and a eat-in kitchen, 2 balconies, view over Vienna, renovated, stylishly furnished, centrally located, Tube-Station: Südtiroler Platz / Hauptbahnhof, calm, view into the green, elevator, basement compartment, 5 min to Hbf by foot

Period	18/04/ - 18/05/2026
Number of persons	2
Total incl. VAT.	€ 2.180,68
Deposit	€ 1.700,00



Living space

101m²



Maximum occupancy

2 Persons



Complete accommodation [?]

1 private bathroom 1 Separated bedroom



7. floor

Elevator available



Check-in

09:00 - 17:00



Check-out

09:00 - 17:00

Sleeping options

Sleeping room



1x Double bed (min. 1,40 m x 2 m)

Description of accommodation

The beautiful, bright, renovated and stylishly furnished 100m² apartment with two rooms, an eat-in kitchen and a bathroom with a toilet (separated) additionally has two balconies. From there you can enjoy the sunset or just have a view over Vienna.

The apartment is on the 7th floor, it is located in the 4th district in Vienna. The next tube station is a 5 min. walk away called: Südtiroler Platz / Hauptbahnhof .

From there you can take the train and reach the airport in only 15 min.

Despite the very central location and very good connections the apartment is calm and peaceful. You don't hear any traffic noise. In summer you even can hear crickets chirping.

Additionally the apartment has an elevator, a basement and a bike room.

Equipment & Features



Basic equipment

- Balcony
- Internet/Wifi
- Private toilet
- Cleaning utensils
- Roof-terrace
- Private washing machine
- Aircondition
- Hairdryer



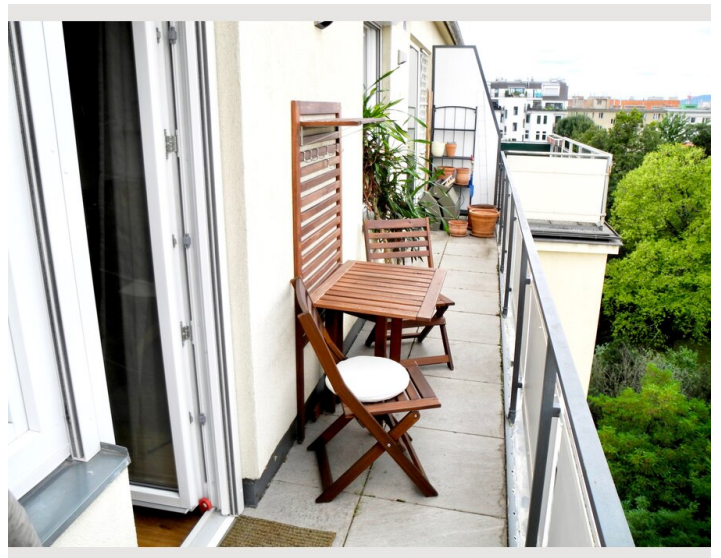
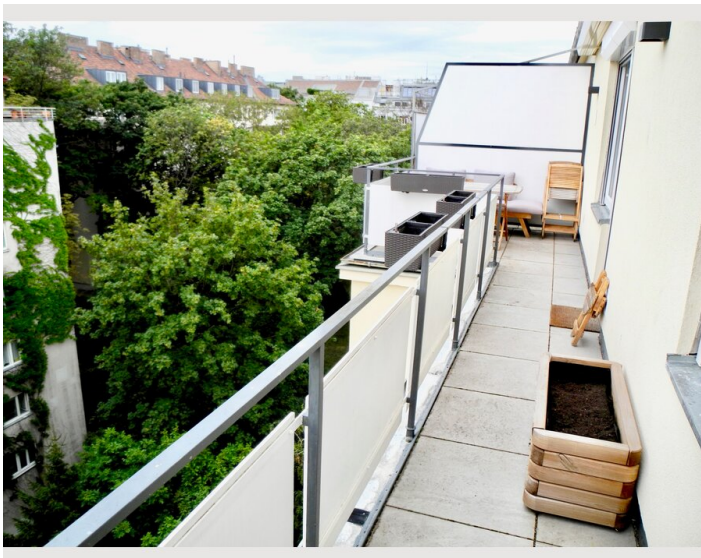
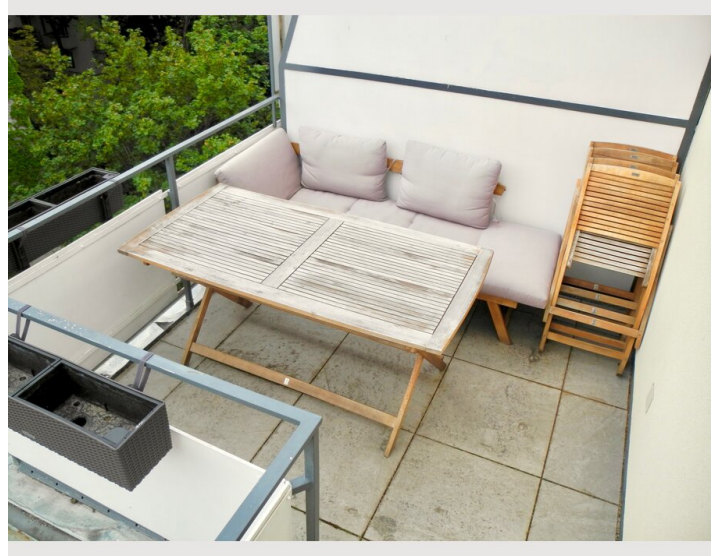
Kitchen

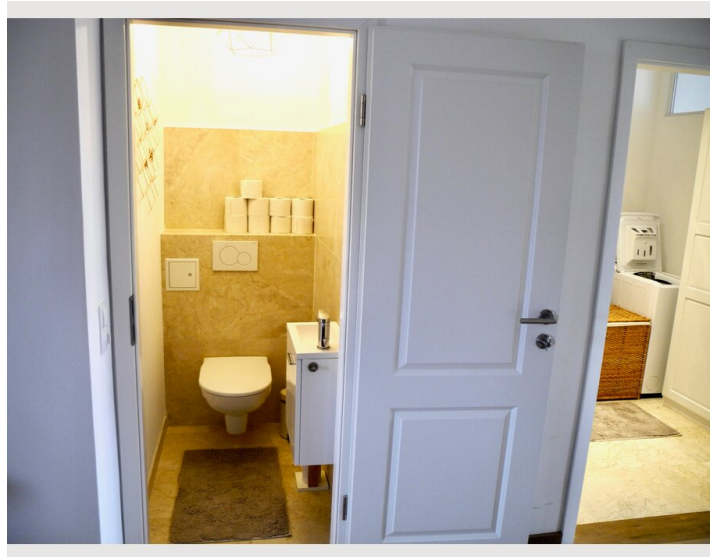
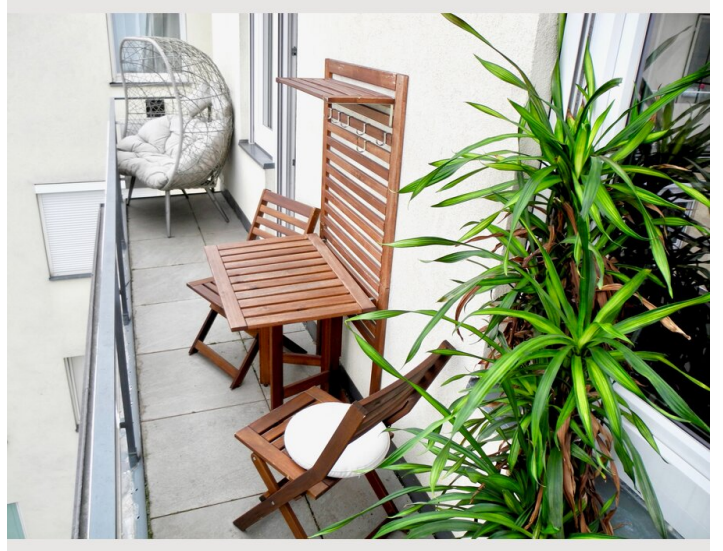
- Private kitchen
- Dishwasher
- Glasses/Tableware
- Microwave

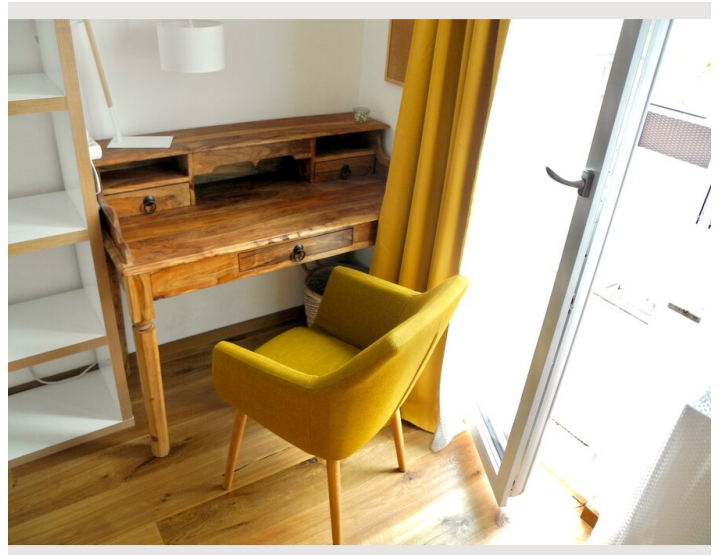
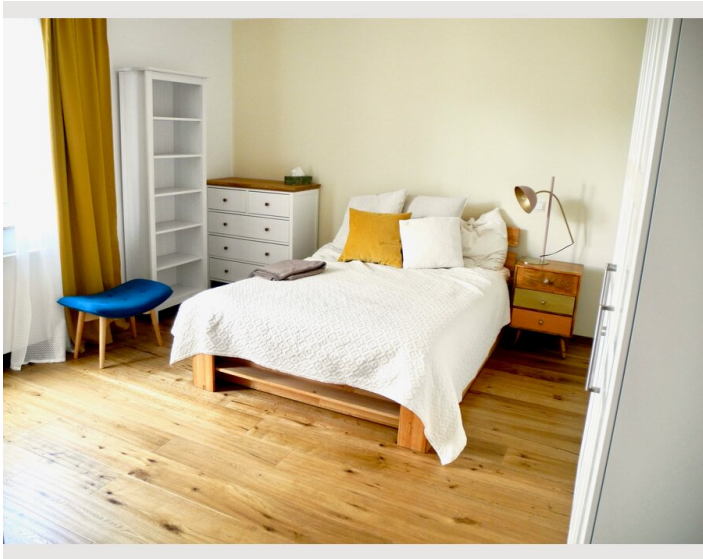
Informations

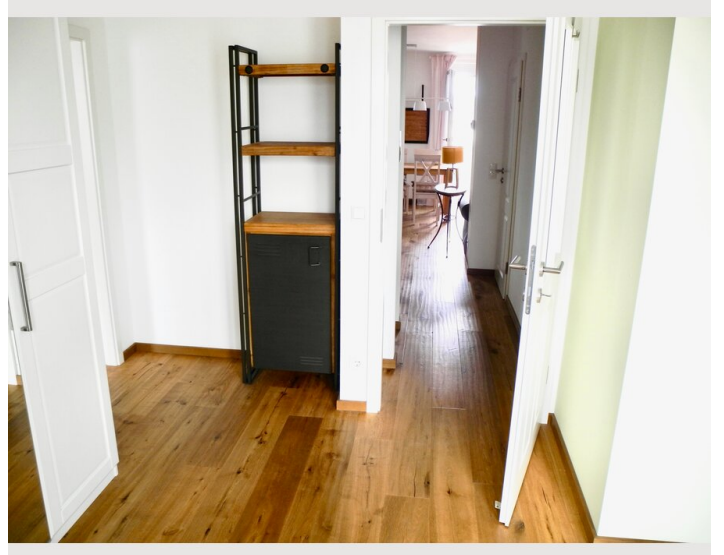
- Suitable for children
- Short-term parking zone subject to a charge
- Private entrance
- Bicycle room free of charge
- Smoking not allowed
- Desk/Workplace
- Pets forbidden

Picture gallery











Infrastructure

 Busline 13A, Station Kolschitzkygasse

 15 min by train from mainstation

 5 min by foot to Mainstation

 supermarkets and drugstores available by foot

 3 Tube Stations to Stephansplatz (city center)

You reach the mainstation 5min by foot, from there you reach the airport 15 min by train.

Next tube station is Südtiroler Platz / Hauptbahnhof, you need 3 min by foot.

Supermarkets, drugstore and pharmacy is also available on foot.

Location

