



3 ROOM APARTMENT, 5023 SALZBURG - GUGGENTHAL

Apartment at the gateway to the city of Salzburg

Object number: ELSQ1

[View and rent online](#)

ARRIVE & LIVE UP - THE VIEW² - SALZBURG: Exclusive, barrier-free designer apartment in the near to city of Salzburg (6 km - 10 min.). Enjoy your stay in the fully equipped apartment with an underground car park that can be entered at ground level.

Period	17/04/ - 17/05/2026
Number of persons	2
Total incl. VAT.	€ 1.988,28
Deposit	€ 1.600,00



Living space

62m²



Maximum occupancy

4 Persons



Complete accommodation [?]

1 private bathroom 2 Separated bedrooms 1 Living-Sleepingroom



Ground floor

Elevator available



Check-in

16:00 - 21:00



Check-out

16:00 - 21:00

Sleeping options

Bedroom 1



1x Double bed (min. 1,80 m x
2 m)

Bedroom 2



1x Bunk bed

Living and sleeping



1x Sofa bed (2 persons)

Descripton of accommodation

Arrive and revive - The View2-Salzburg

Exclusive designer apartment at the gateway to the City of Salzburg (6km-10 minutes) and to the Salzkammergut lake district (14km - 15 minutes).

Enjoy your stay here in the well-equipped barrier-free holiday apartment for maximum 4 persons with a parking lot in the underground garage.

Reside above Salzburg. The brilliant position, the peace of the surrounding Nature with lush meadows and woodlands, will help to regenerate you from hectic everyday business life. Here you will find peace, relaxation and power for new achievements.

Close to the festival city of Salzburg yet in the green belt, lies this beautifully situated apartment built in 2018.

Discover the majestic mountains and the crystal lakes of the Salzkammergut when hiking or cycling. Stroll through the narrow streets of the Mozart city. Make a shopping tour through the Getreidegasse, which is known as "Austria's loveliest shopping centre in the open air", or in the Designer Outlet Salzburg as well as in the Europapark shopping centre. Treat yourself to a cup of coffee in one of the cafés in the old city of Salzburg. The holiday apartment lies at the foot of the Gaisberg and Nockstein mountains on the outskirts of Salzburg. From this ideal position you will find a host of tours to enjoy.

Designer Apartment tastefully decorated

- barrier-free 62m² / 2 - 6 persons/ west side
- 1 bedroom with box-spring bed
- 1 bedroom with bunk beds
- Open living room with bed couch
- Fully equipped kitchen with dishwasher, fridge with freezer compartment
- Bathroom with rain shower
- Free W-Lan
- Cable TV and sound bar
- Large terrace with seating
- Garden with loungers and sun umbrella
- Ground level covered car parking
- Bedding and towels included.

The apartment with 2 bedrooms offers all comforts which a tourist or business traveller requires. Bed linen and towels are of course included. End cleaning is included in the price.

Equipment & Features



Basic equipment

- Garden
- Music system/docking station
- Community washing machine
- Bedclothes
- Private toilet
- Vacuum cleaner
- Cleaning utensils
- Internet/Wifi
- TV
- Community dryer
- Towels
- Garage
- Iron & ironing board
- Hairdryer



First supply

- Toilet paper
- Soap
- Fridge filling on request
- shampoo
- Nespresso capsules



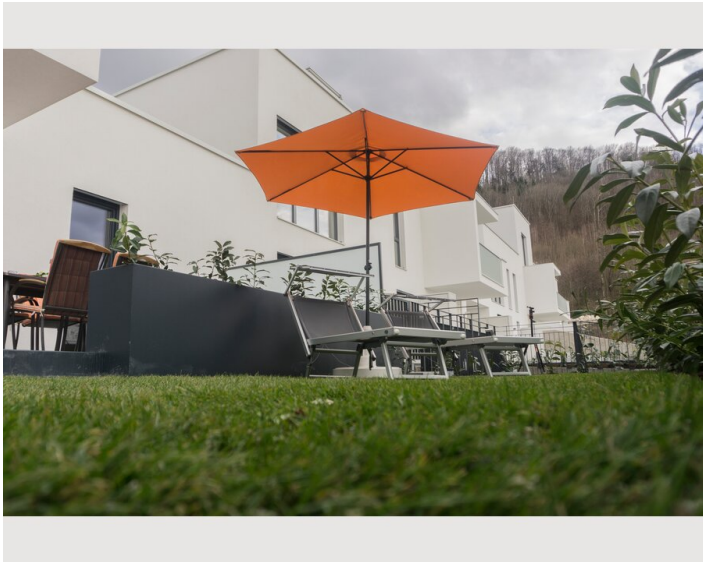
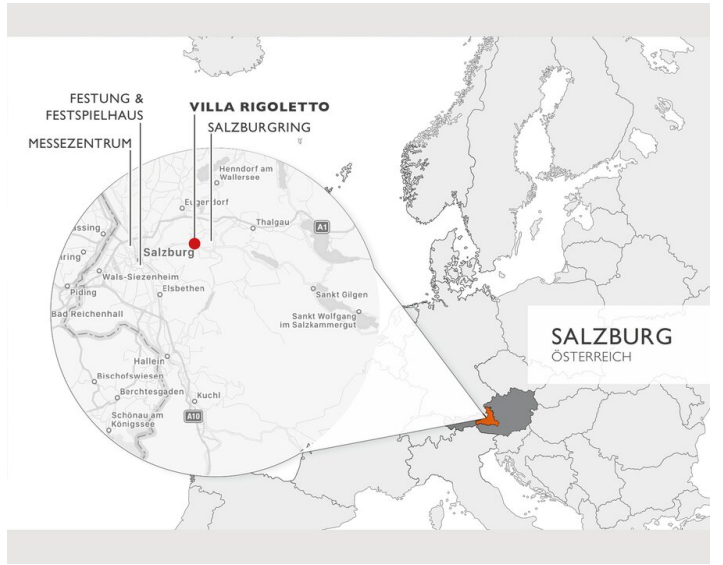
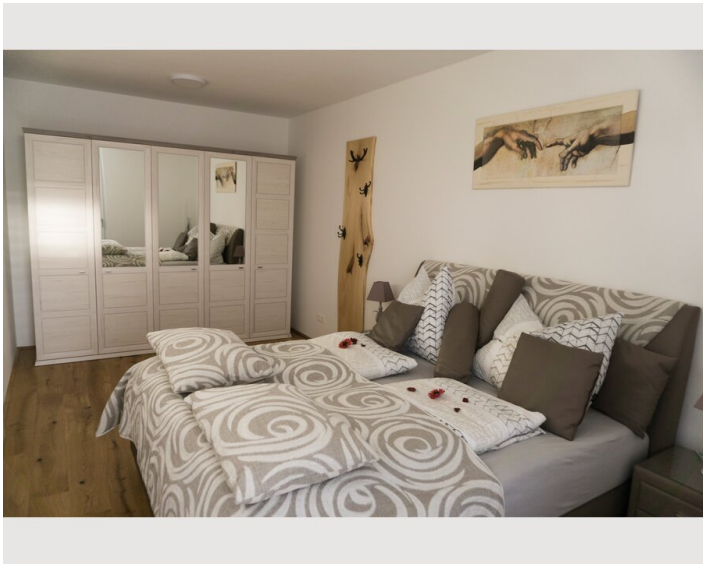
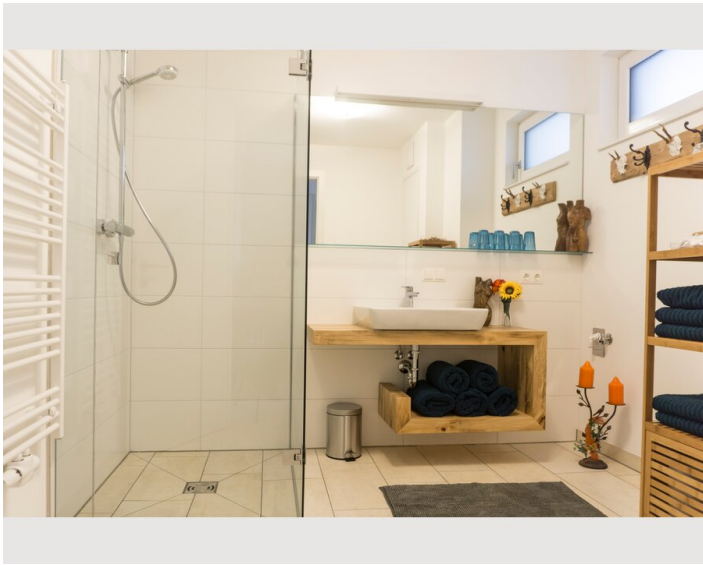
Kitchen

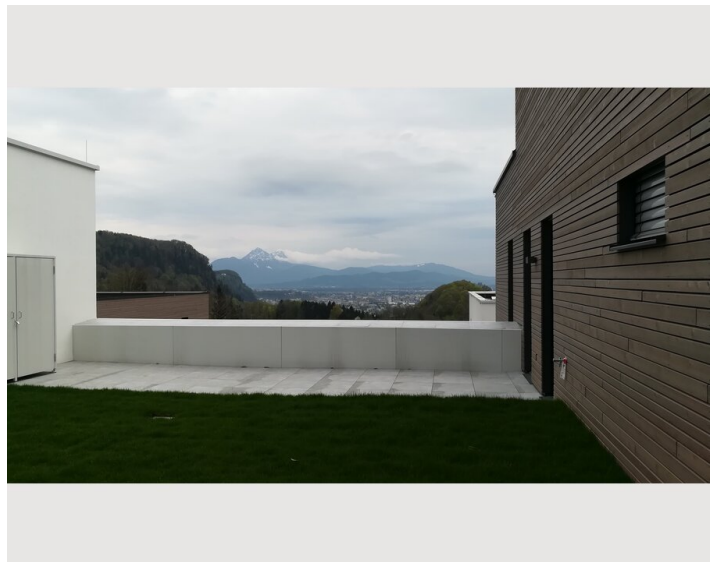
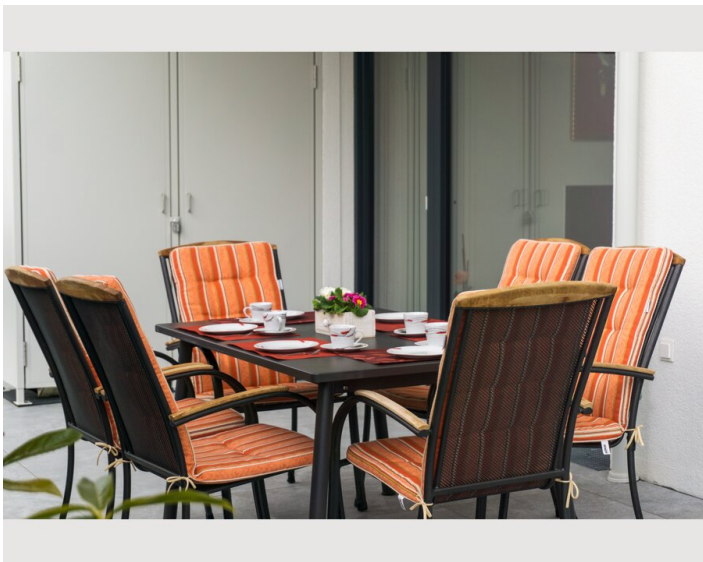
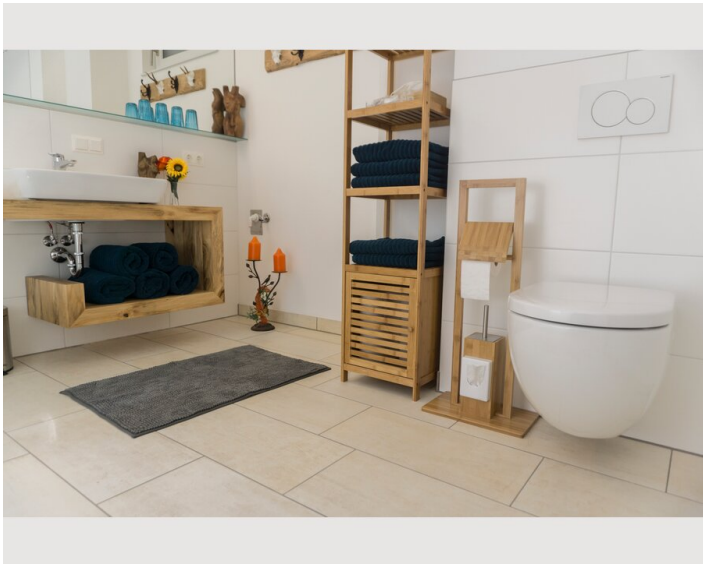
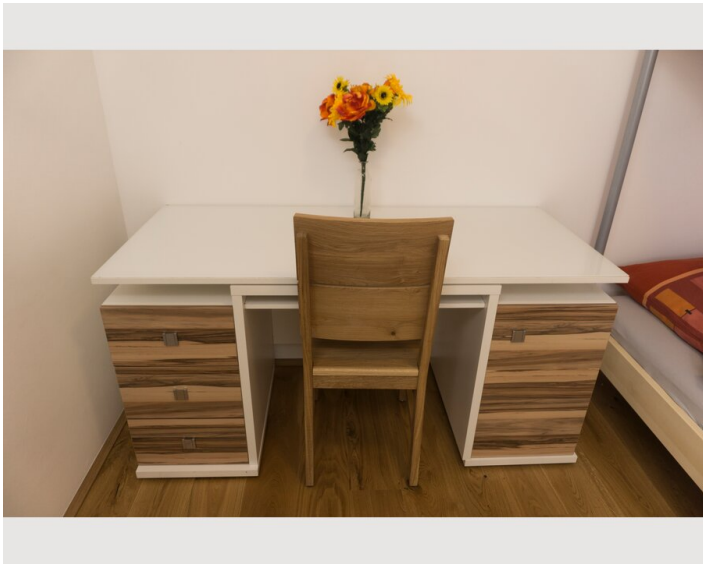
- Private kitchen
- Glasses/Tableware
- Filter coffee
- Microwave
- Cooking utensils
- Espresso machine
- Dishwasher

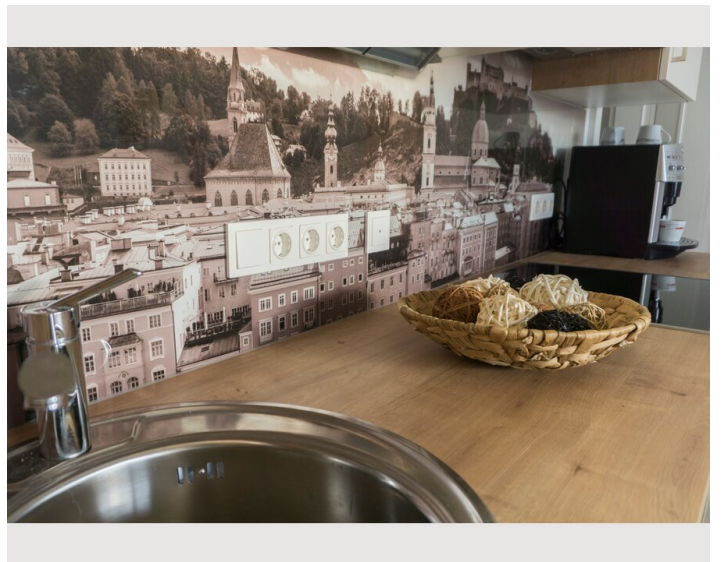
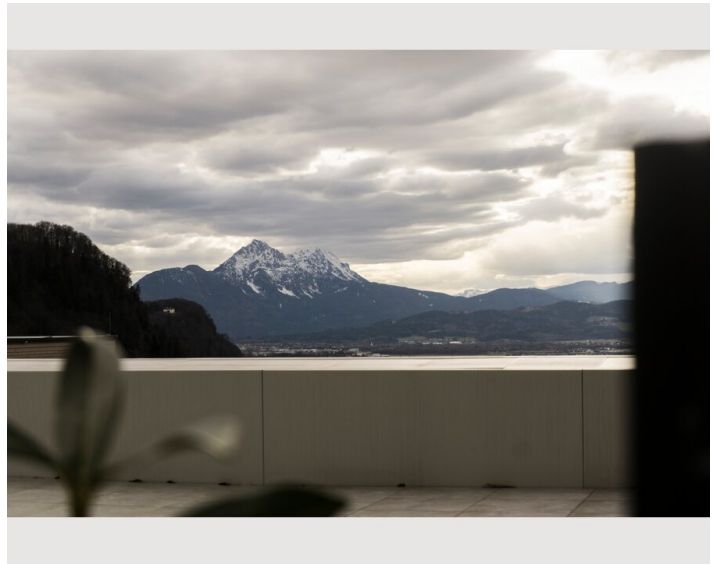
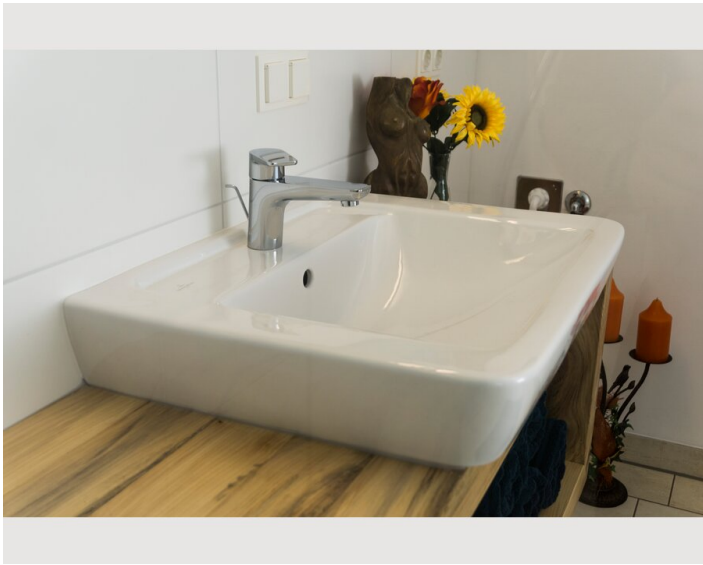
Informations

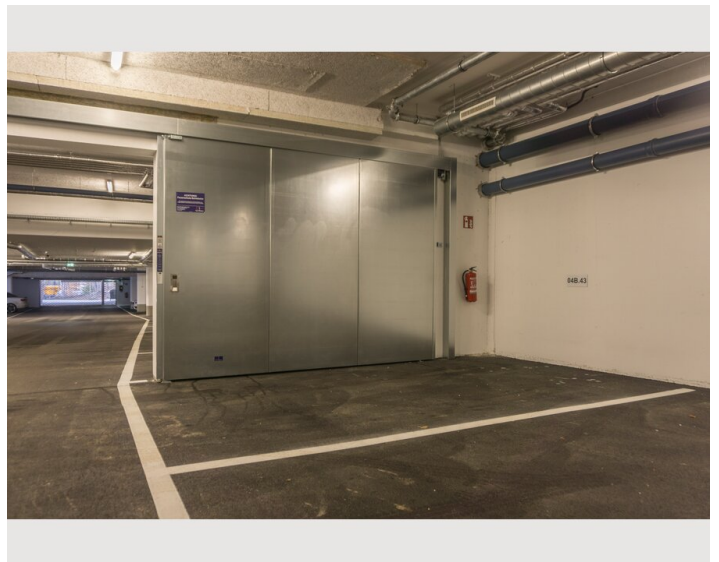
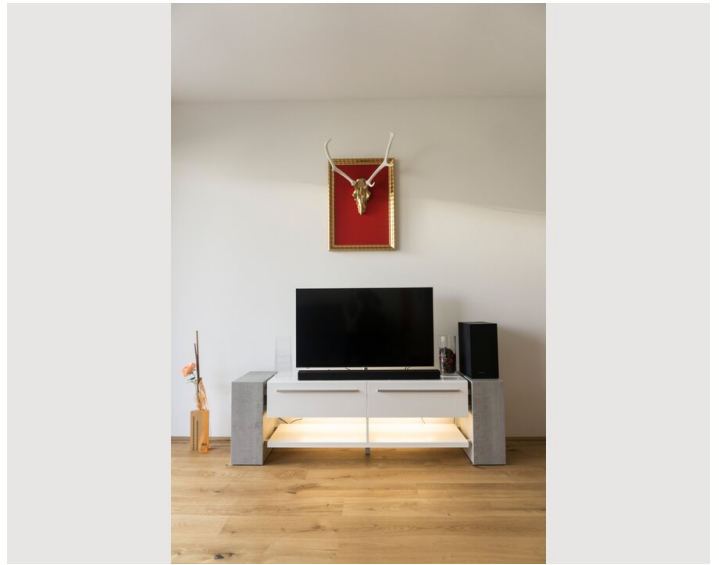
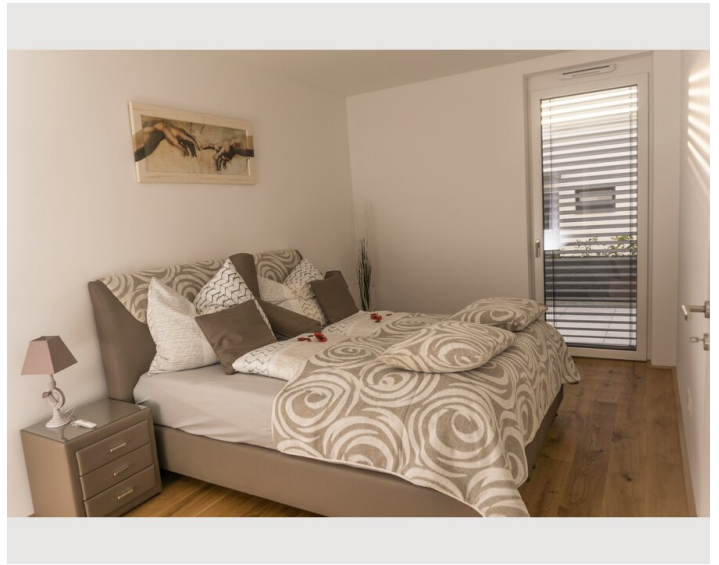
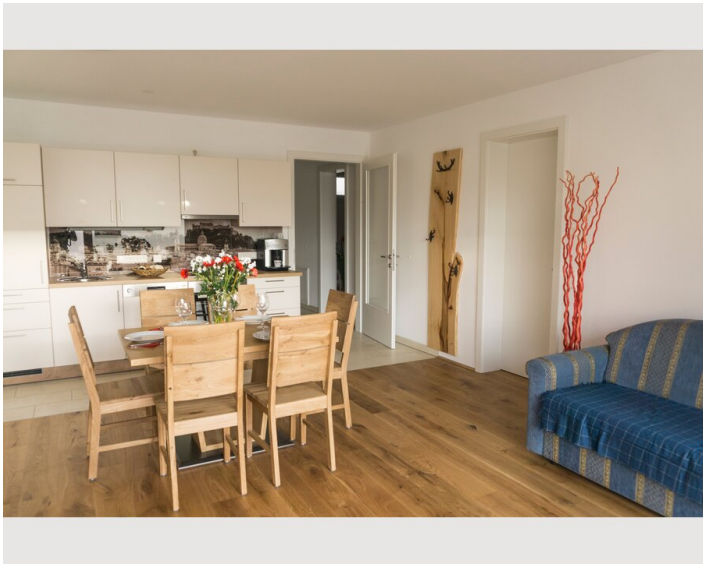
- Suitable for children
- Desk/Workplace
- Pets forbidden
- Smoking not allowed
- Private entrance
- Regular cleaning at extra cost

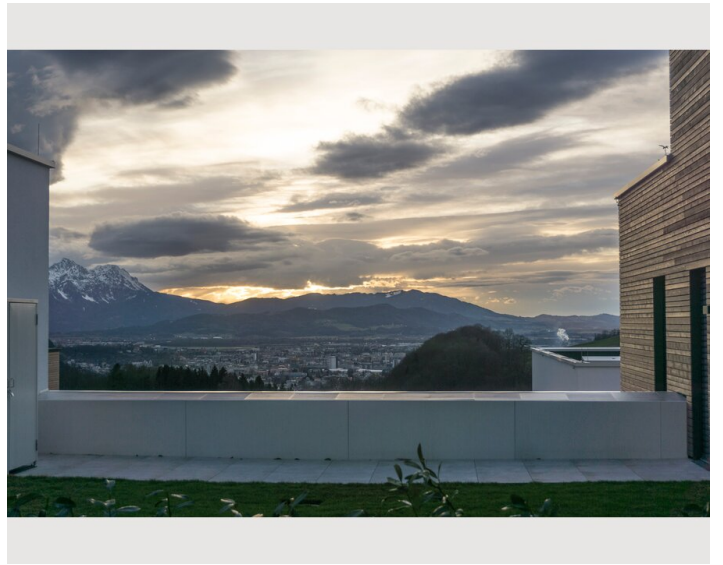
Picture gallery













Infrastructure


 Bus stop towards Salzburg and Bad Ischl Nr. 150 - 0.2 km

 Train Main Station Salzburg - 3,8 km

 City - Old Town - Getreidegasse - 4,4 km

 Airoport Salzburg - 7,9 km

 Supermarket meat and sausages Lettner - 0,6 km

 Supermarket SPAR, Saint-Julien-Straße 33A, 5020 Salzburg - 5 km

Was ist in der Nähe:

- Bus stop towards Salzburg and Bad Ischl Nr. 150 - 0.2 km
- Supermarket meat and sausages Lettner - 0,6 km
- Supermarket Nockstein Shop - 1,5 km
- Restaurant Nockstein - 2 km
- Restaurant Gersbergalm - 2 km
- Café/Bar Römerbad Casa Juvavum 2 km
- Train Main Station Salzburg - 3,8 km
- University Mozarteum - 4,2 km
- Schloss Mirabell - 4,2 km
- Getreidegasse - 4,4 km
- Großes Festspielhaus - 4,5 km
- Restaurant Gasthof am Riedl - 5 km
- Supermarket SPAR, Saint-Julien-Straße 33A, 5020 Salzburg - 5 km
- Shoppingcenter Europark - 6,6 km
- Red Bull Arena - 7,3 km
- Airoport Salzburg - 7,9 km
- Lake Fuschlsee - 13 km

Location

