

2 ZIMMER WOHNUNG, 2320 SCHWECHAT-MANNSWÖRTH

## Business Apartment in Schwechat-Mannswörth

Object number: DORZ1

[View and rent online](#)

We make you feel at home. You live in quiet, cozy, fully equipped business apartments right next to the Donauauen National Park. Only 4 km from Vienna International Airport and 15 km from downtown Vienna, you will be staying in a prime location.

<b>Period</b>	18/04/ - 18/05/2026
<b>Number of persons</b>	2
<b>Total incl. VAT.</b>	€ 1.049,57
<b>Deposit</b>	€ 800,00



### Living space

38m<sup>2</sup>



### Maximum occupancy

3 Persons



### Complete accommodation <sup>?</sup>

1 private bathroom 1 Separated bedroom 1 Living-Sleepingroom



### 1. floor



### Check-in

14:00 - 22:00



### Check-out

14:00 - 22:00

## Sleeping options

### Sleeping room



1x Double bed (min. 1,60 m x  
2 m)

### Living and sleeping



1x Sofa bed (1 person)

## Descripton of accommodation

The apartments on the upper floors are easily accessible by elevator. Your car can be parked in front of the house. The reception with personal check-in and the business center await you in Das Reinisch Hotel & Conference \*\*\*\*, a five-minute walk away.

## Equipment & Features



### Basic equipment

- Internet/Wifi
  - Bedclothes
  - Private toilet
  - Hairdryer
  - TV
  - Towels
  - Private parking space
- 



### First supply

- Toilet paper
  - Soap
  - shampoo
- 



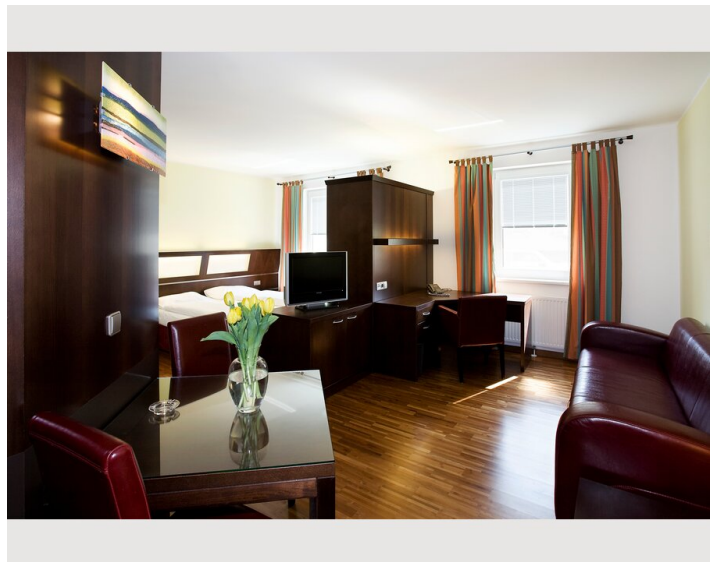
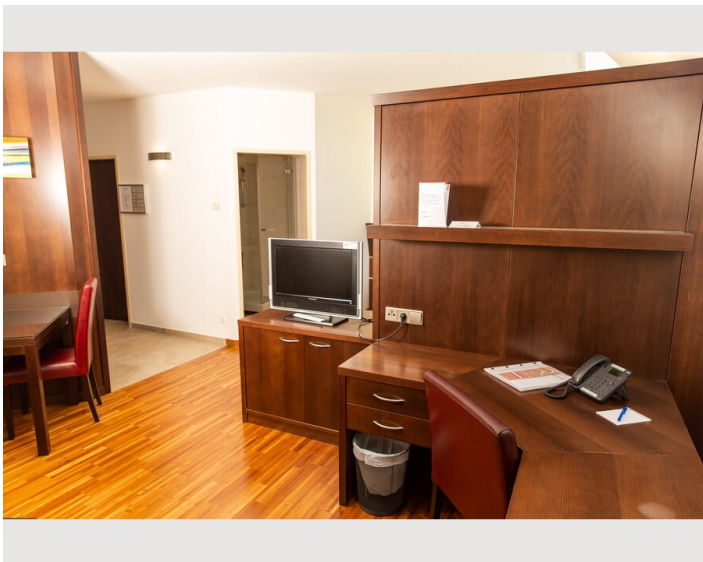
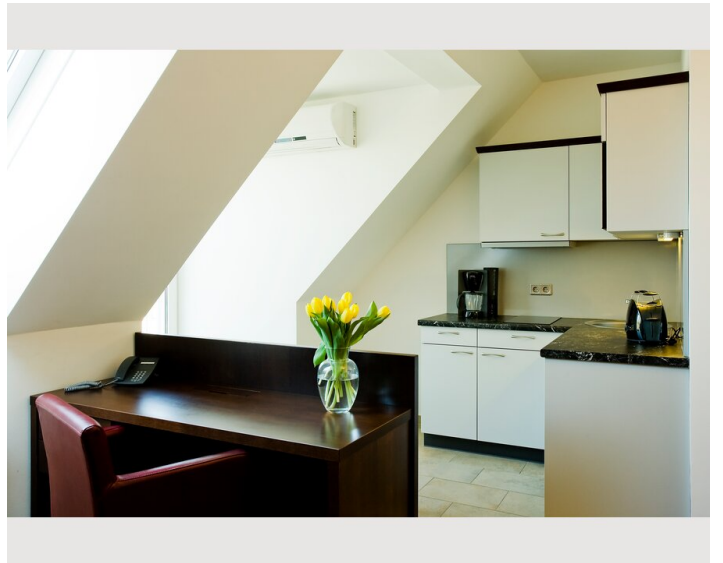
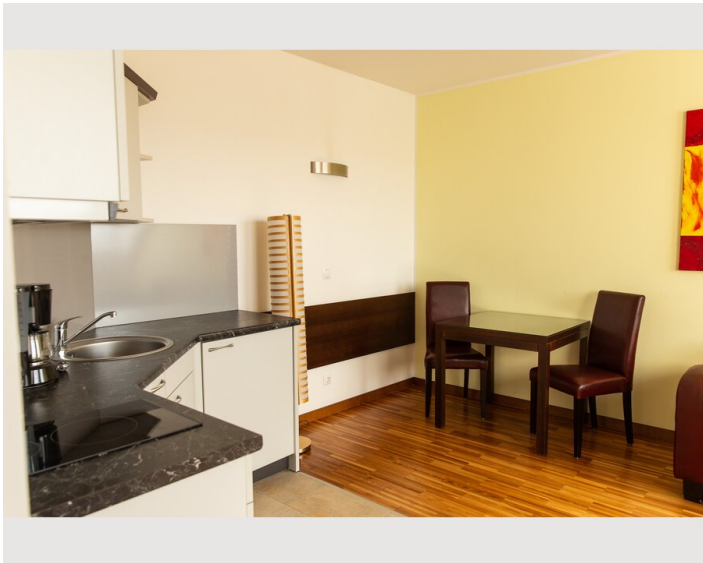
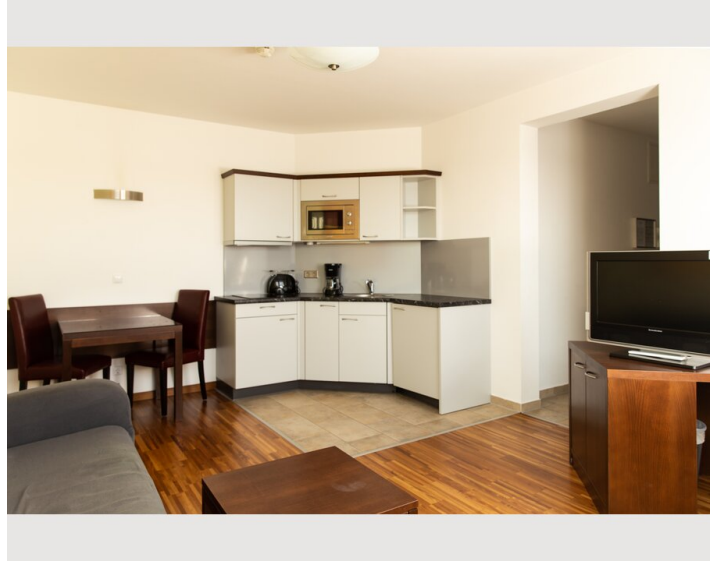
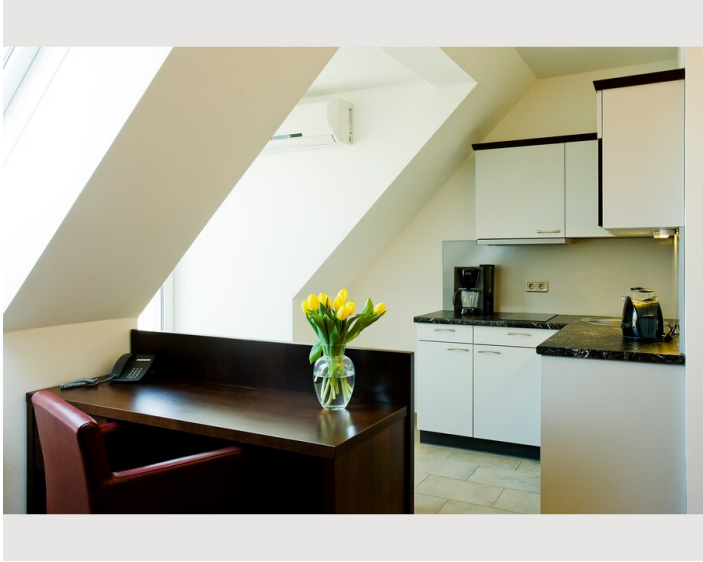
### Kitchen

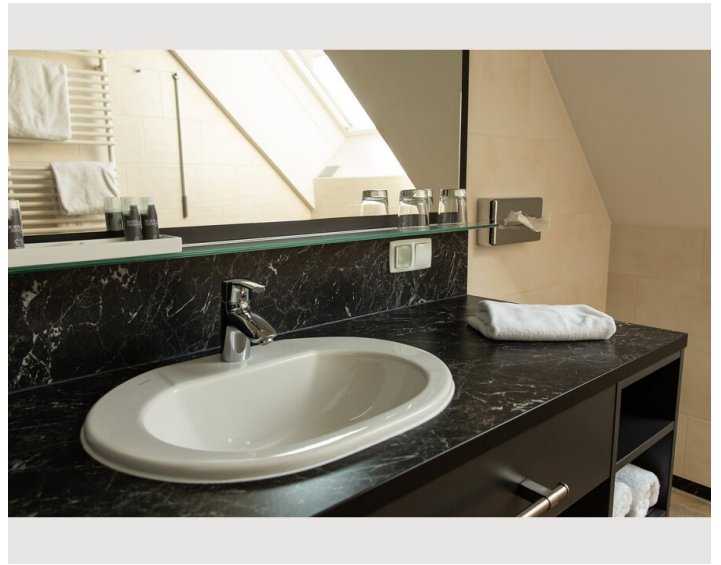
- Private kitchen
- Cooking utensils
- Espresso machine
- Kitchenette
- Glasses/Tableware
- Microwave

## Informations

- Suitable for construction workers
- Smoking not allowed
- Desk/Workplace
- Regular cleaning at extra cost
- Suitable for children
- Free short-term parking zone
- Pets on request
- Bicycle room free of charge

## Picture gallery





## Location

