



2 ZIMMER WOHNUNG, 1170 VIENNA

## 2 rooms-Apt. 56 mq, quiet suburban location with excellent transport links

Object number: SCHL1

[View and rent online](#)

The flat is also suitable as an office workplace. Complete equipment, 56 qm plus loggia. Near possibilities for leisure and recreational opportunities: Wienerwald, outdoor pools etc

<b>Period</b>	27/06/ - 27/07/2026
<b>Number of persons</b>	2
<b>Total incl. VAT.</b>	€ 1.589,32
<b>Deposit</b>	€ 1.200,00



### Living space

56m<sup>2</sup>



### Maximum occupancy

2 Persons



### Complete accommodation <sup>?</sup>

1 private bathroom 1 Separated bedroom 1 Living-Sleepingroom



### 1. floor

Elevator available



### Check-in

13:00 - 17:00



### Check-out

13:00 - 17:00

## Sleeping options

### Sleeping room



1x Double bed (min. 1,40 m x  
2 m)

### Living and sleeping



1x Double bed (min. 1,40 m x  
2 m)



1x Sofa bed (1 person)

## Descripton of accommodation

The flat is situated in low-traffic and quiet location, but best traffic connections (250 m): 2 lines into the city center and 1 line to Schönbrunn castle. Supermarkets, restaurants und further utilities close to the Apt.

## Equipment & Features



### Basic equipment

- Internet/Wifi
- Community washing machine
- Bedclothes
- Private toilet
- Iron & ironing board
- Hairdryer
- TV
- Community dryer
- Towels
- Vacuum cleaner
- Cleaning utensils



### First supply

- Toilet paper
- Soap
- shampoo
- Nespresso capsules



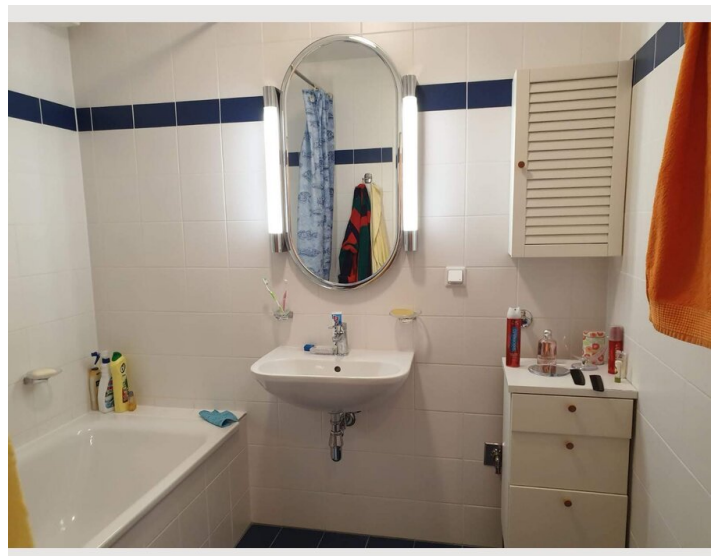
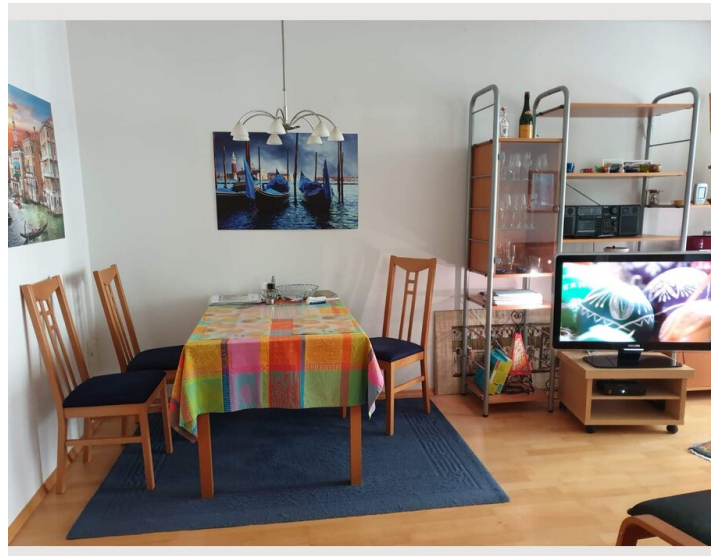
### Kitchen

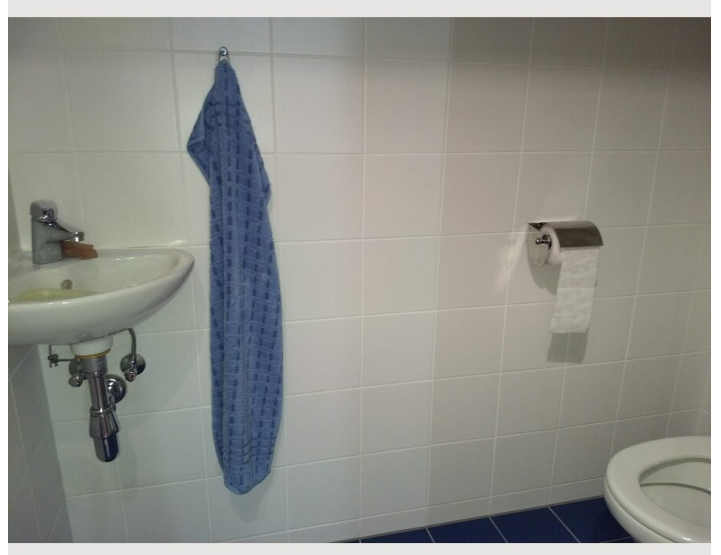
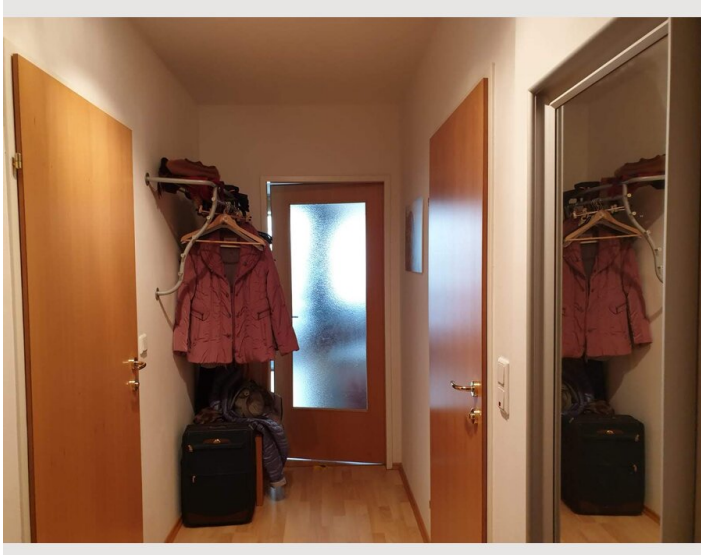
- Private kitchen
- Glasses/Tableware
- Filter coffee
- Microwave
- Cooking utensils
- Espresso machine
- Dishwasher

## Informations

- Suitable for construction workers
- Smoking not allowed
- Desk/Workplace
- Pets forbidden
- Suitable for children
- Short-term parking zone subject to a charge
- Private entrance
- Bicycle room free of charge

## Picture gallery





### Infrastructure

 station Dornbach

---

supermarket and tram stop 250 m

## Location

