



STUDIO APARTMENT, 1220 VIENNA

Smart Living (2in1)

Object number: FEEM7

[View and rent online](#)

Period	18/04/ - 18/05/2026
Number of persons	2
Total incl. VAT.	€ 1.249,38
Deposit	€ 1.000,00

Opened in March 2020. Compact apartments with kitchenettes and dining areas.



Living space

22m²



Maximum occupancy

2 Persons



Complete accommodation [?]

1 private bathroom 1 Living-Sleepingroom



2. floor



Check-in

15:00 - 23:00



Check-out

06:00 - 10:00

Sleeping options

Living and sleeping



1x Double bed (min. 1,60 m x 2 m)

Description of accommodation

In March 2020, our second location was opened with 32 compact apartments ranging in size between 22-26m². These are designed in such a way that two apartments can be connected with each other if required. Our studios are perfect for a city trip or short stay. Kitchenette with microwave and dining area makes the apartments a cosy accommodation. In ALL apartments you will find fresh bed linen, towels, bath towels, hairdryer, kettle, microwave, cutlery, dishes, dustbins, plates, glasses.

Equipment & Features



Basic equipment

- Internet/Wifi
- Bedclothes
- Private toilet
- Hairdryer
- TV
- Towels
- Garage



First supply

- Toilet paper
- Soap
- shampoo



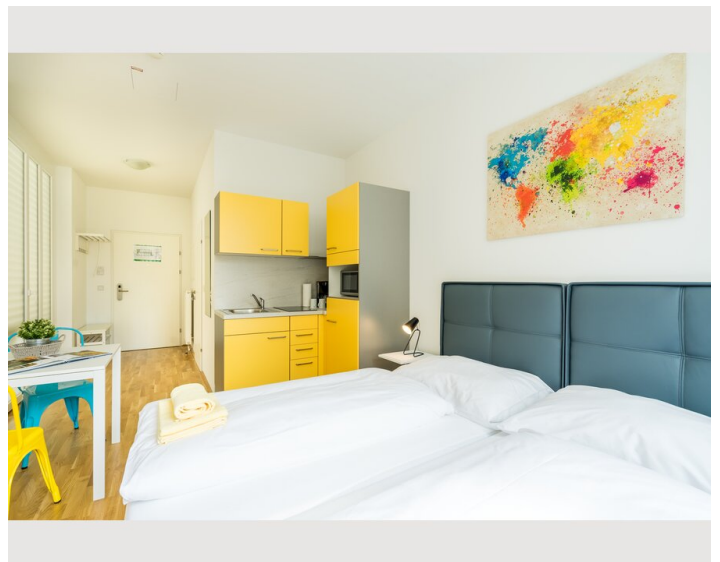
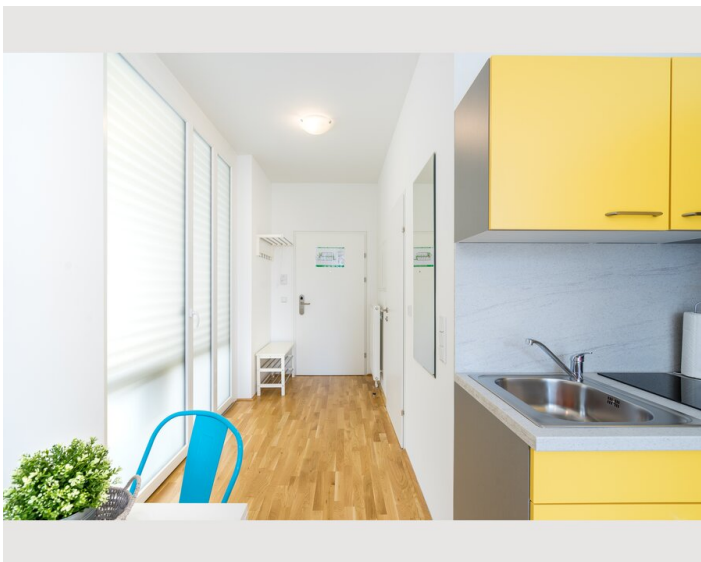
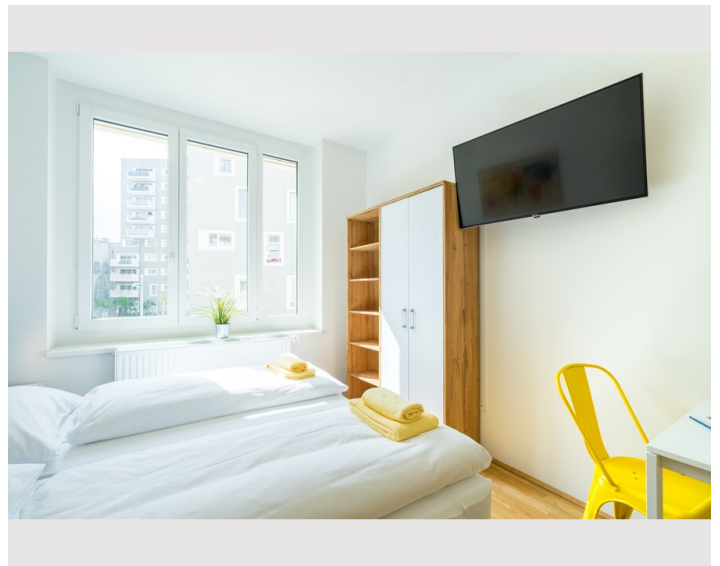
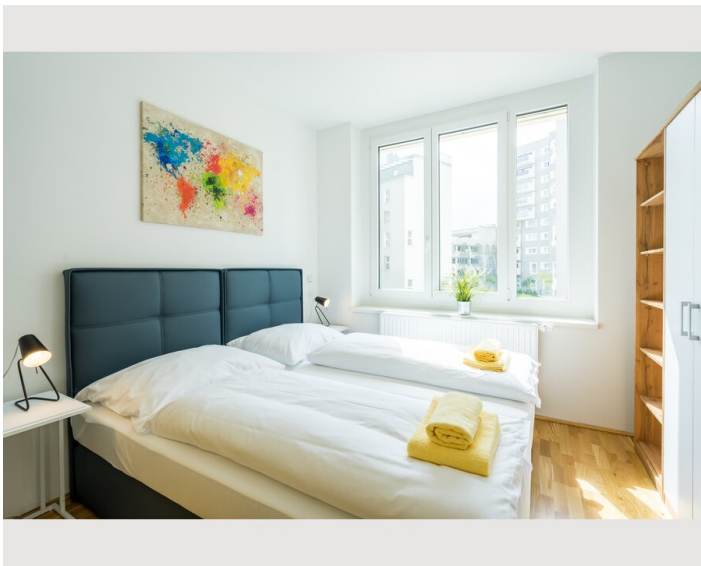
Kitchen

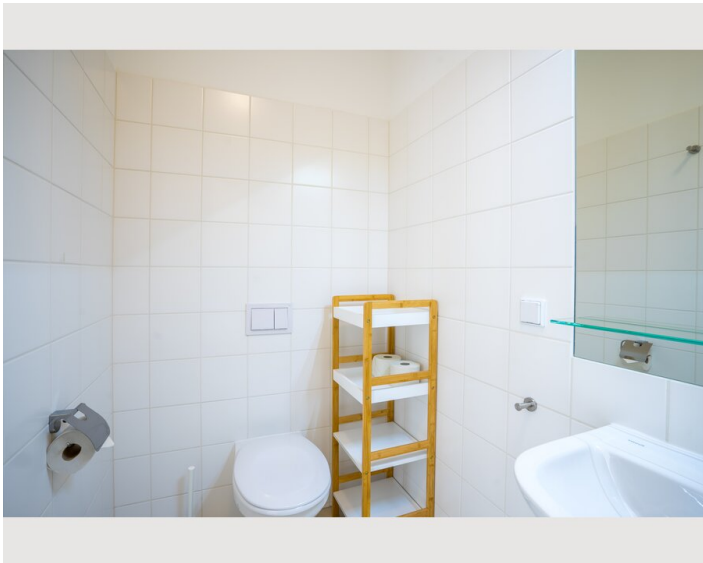
- Private kitchen
- Glasses/Tableware
- Dishwasher
- Cooking utensils
- Filter coffee
- Microwave

Informations

- Suitable for construction workers
- Smoking not allowed
- Desk/Workplace
- Regular cleaning at extra cost
- Suitable for children
- Short-term parking zone subject to a charge
- Pets on request
- Bicycle room free of charge

Picture gallery





Infrastructure

 2 minutes Walking Distance

 4 minutes Walking Distance

 5 minutes Walking Distance

There is plenty of space to relax in Seestadt. Beautiful parks, playgrounds, green areas and of course the lake invite you to soak up the sun and enjoy. Generously planned sidewalks, attractively designed squares with small play islands shape the cityscape and make every walk through the seaside town an experience. Take advantage of the proximity to the Marchfeld for an excursion or recharge your batteries in the Lobau in the Donau-Auen National Park, just a few minutes' bike ride away. In the district map you will find tips for trips to the surrounding area.

Location

