



2 ZIMMER WOHNUNG, 1120 VIENNA

View over Vienna and Schönbrunn

Object number: SALG1

[View and rent online](#)

Period	18/04/ - 18/05/2026
Number of persons	2
Total incl. VAT.	€ 3.097,78
Deposit	€ 2.300,00

Fantastic penthouse in a very good location near Schönbrunn Palace Park



Living space

74m²



Maximum occupancy

4 Persons



Complete accommodation [?]

1 private bathroom 1 Separated bedroom 1 Living-Sleepingroom



4. floor

Elevator available



Check-in

12:00 - 18:00



Check-out

08:00 - 12:00

Sleeping options

Sleeping room



1x Double bed (min. 1,60 m x
2 m)

Living and sleeping



1x Sofa bed (2 persons)

Descripton of accommodation

The highlight is the unique panoramic view of Vienna's city center and the Vienna Woods from the spacious roof terrace and cozy gallery.

The quiet apartment can accommodate 2 people. In addition to the luxuriously furnished bedroom, the apartment has a large living and working area. In addition, guests have a fully equipped premium kitchen and a modern bathroom with an elegant walk-in shower and double sink as well as a separate toilet.

State-of-the-art equipment, air conditioning, automatic windows and WiFi complete the system.

Equipment & Features



Basic equipment

- Balcony
- Internet/Wifi
- Private washing machine
- Bedclothes
- Private toilet
- Vacuum cleaner
- Cleaning utensils
- Roof-terrace
- TV
- Private dryer
- Towels
- Aircondition
- Iron & ironing board
- Hairdryer



First supply

- Toilet paper
- Soap
- shampoo



Kitchen

- Private kitchen
- Glasses/Tableware
- Dishwasher
- Cooking utensils
- Espresso machine

Informations

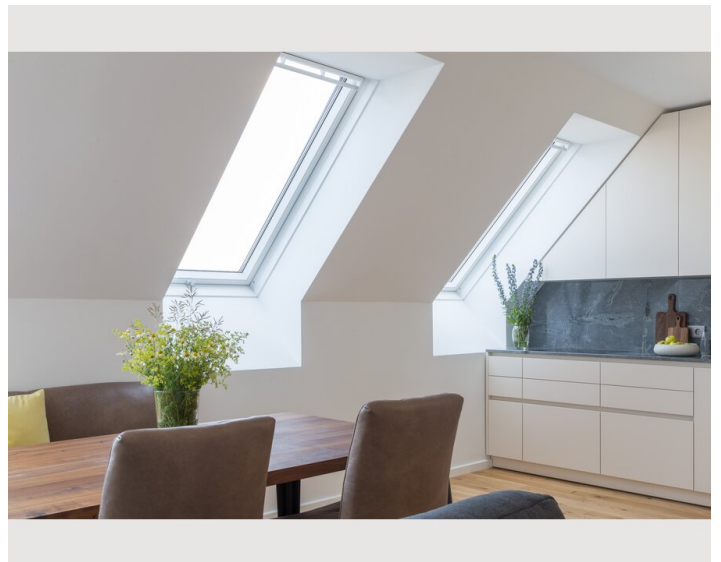
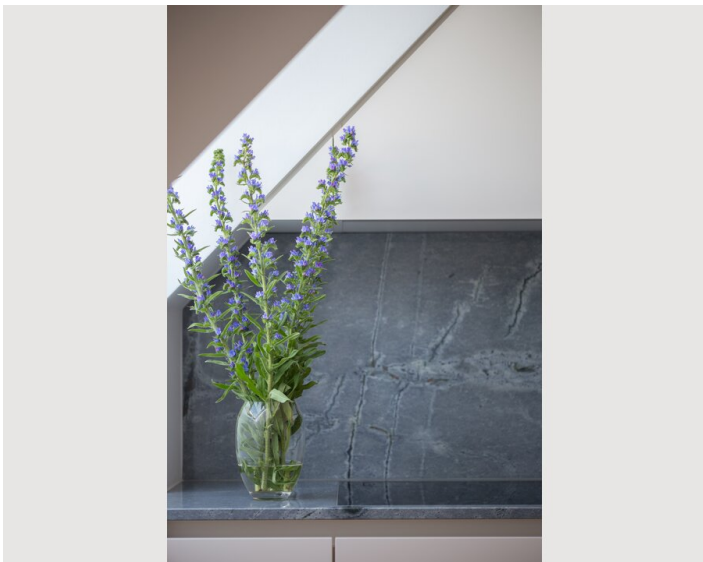
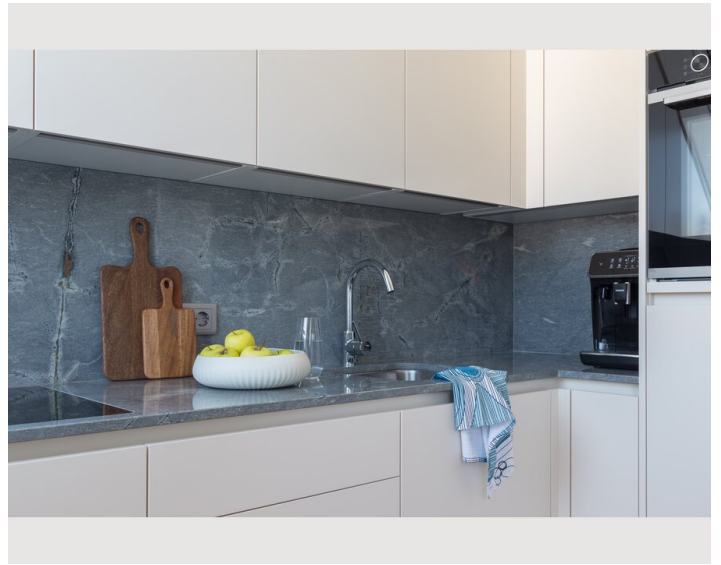
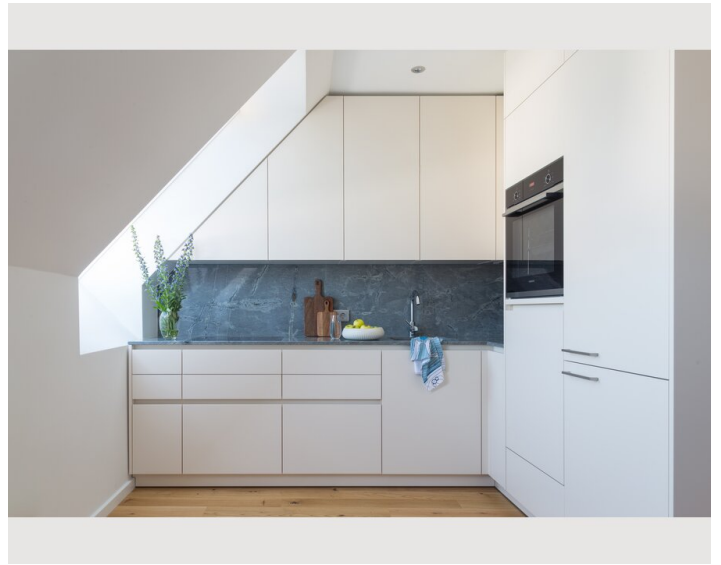
- Smoking not allowed
- Desk/Workplace
- Pets forbidden
- Short-term parking zone subject to a charge
- Private entrance
- Regular cleaning at extra cost

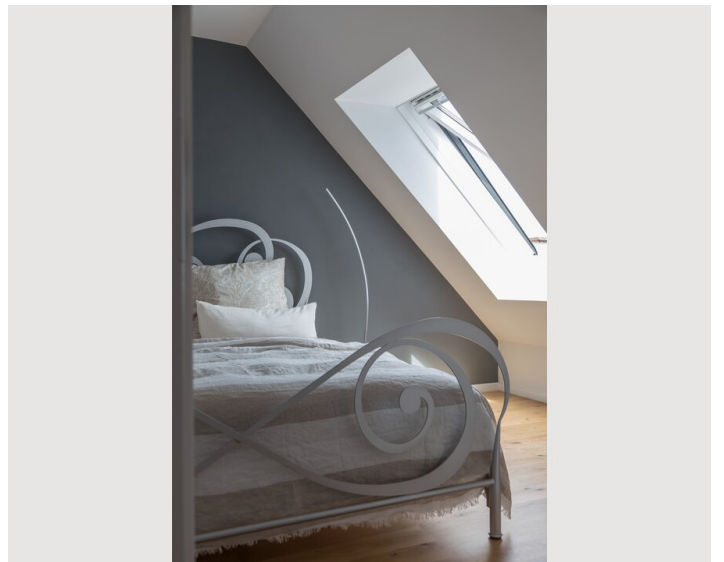
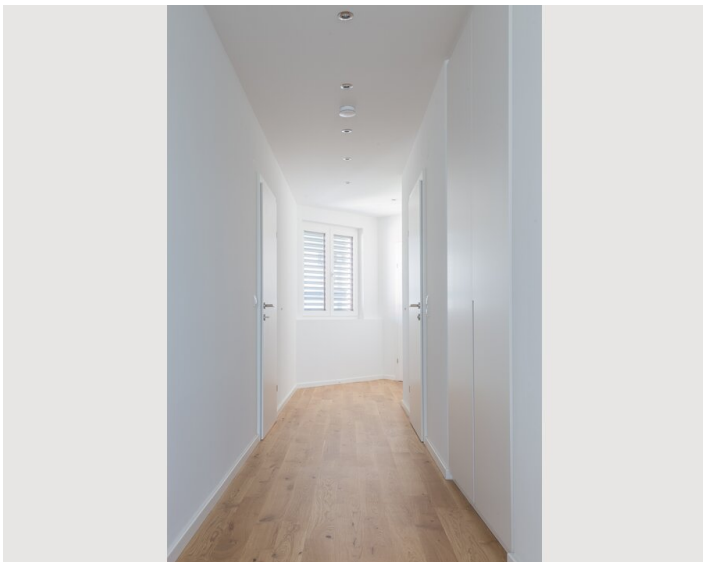
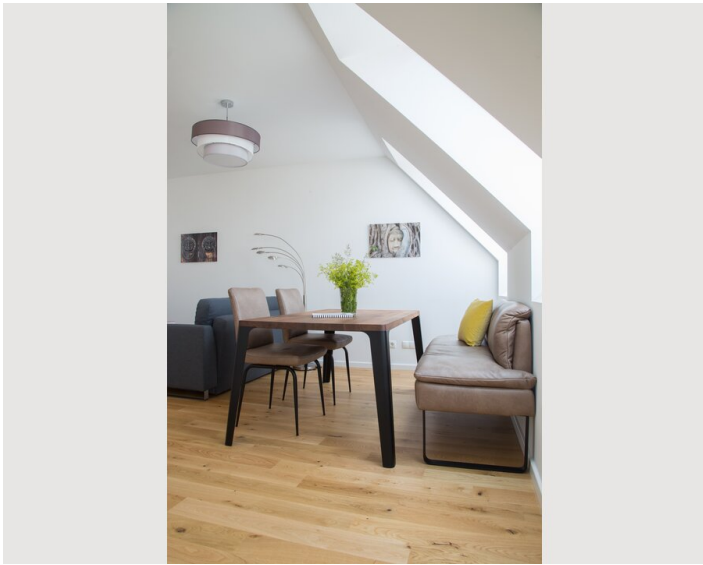
Additional services

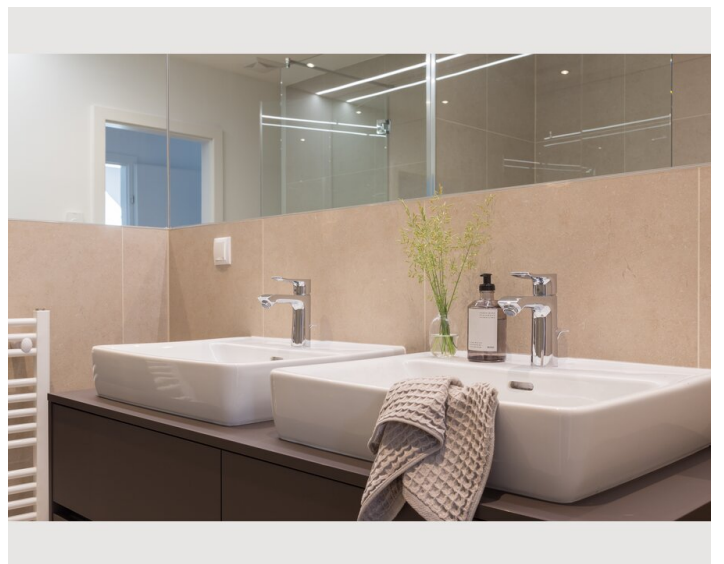
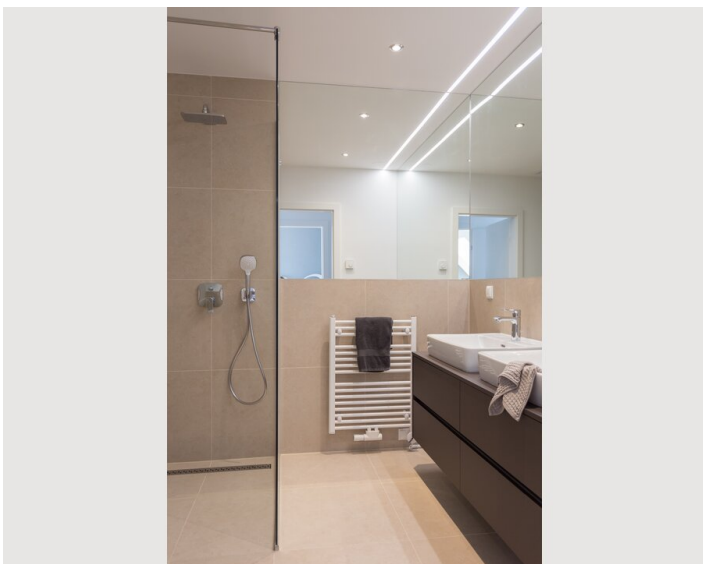
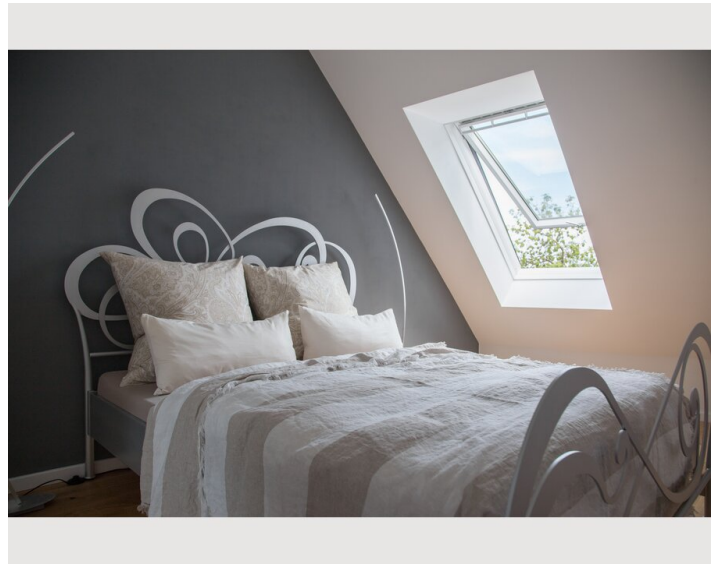
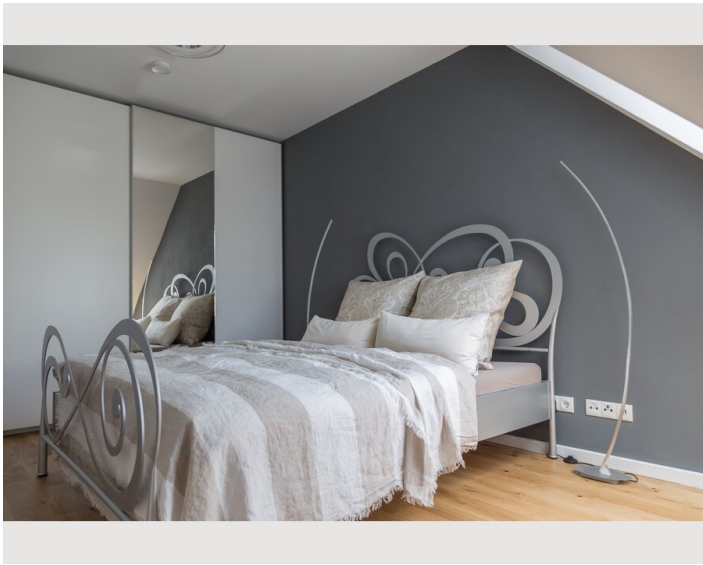
- Final cleaning (€ 180,00)

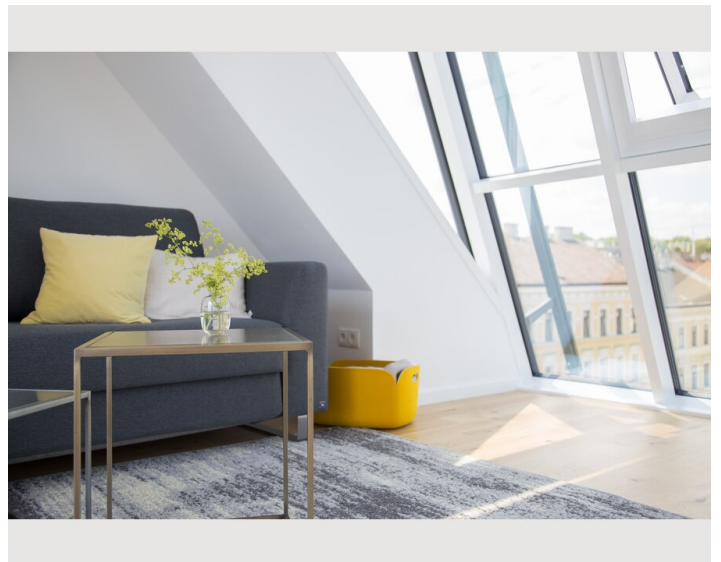
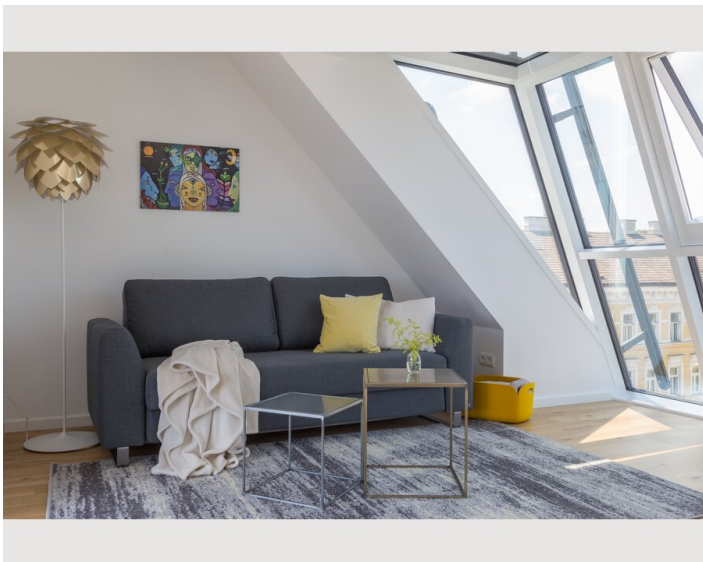
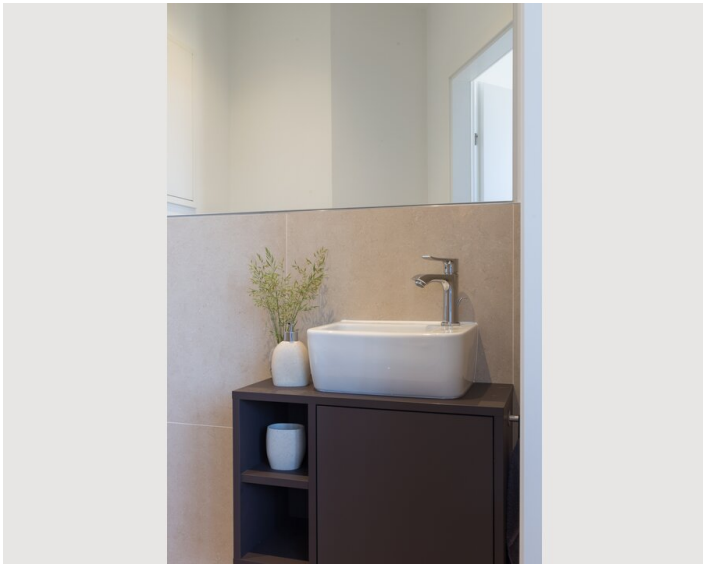
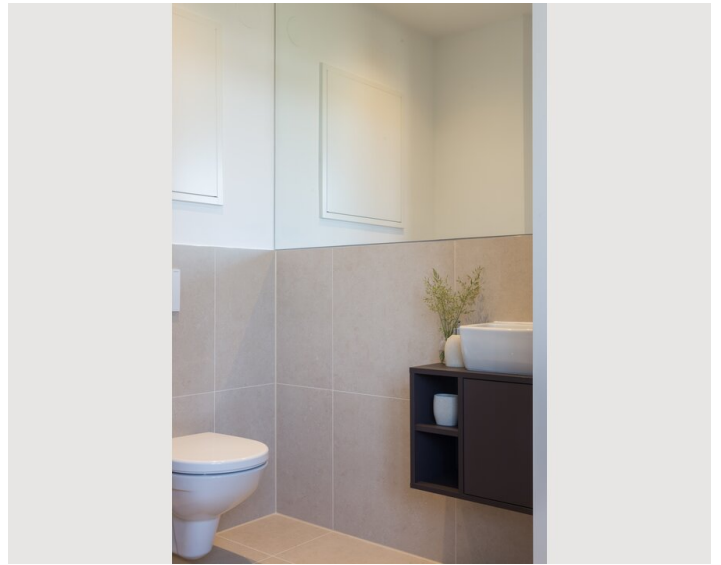
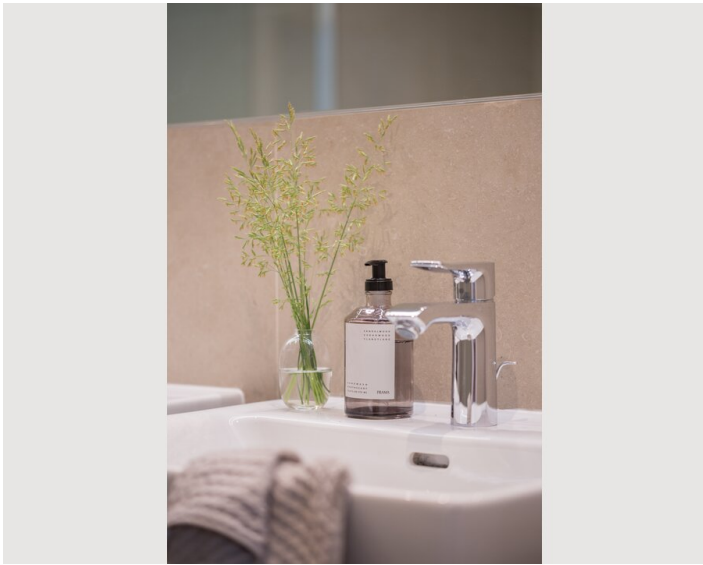
All prices are gross per month - billing is done directly with the lessor.

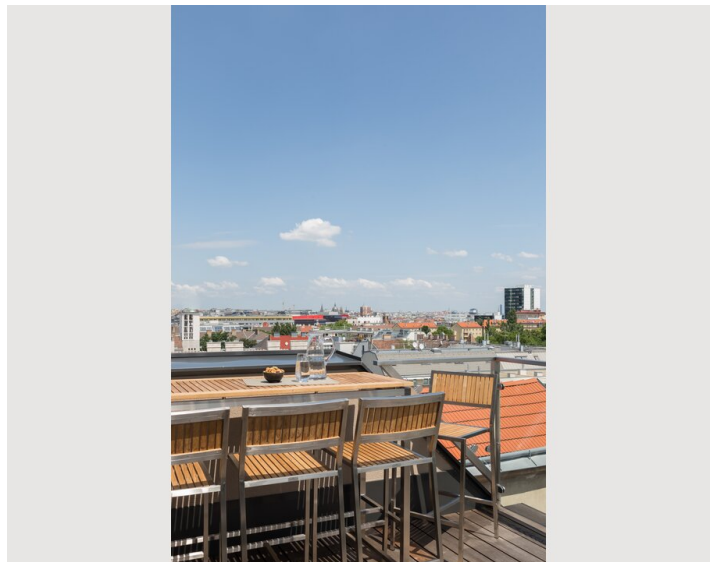
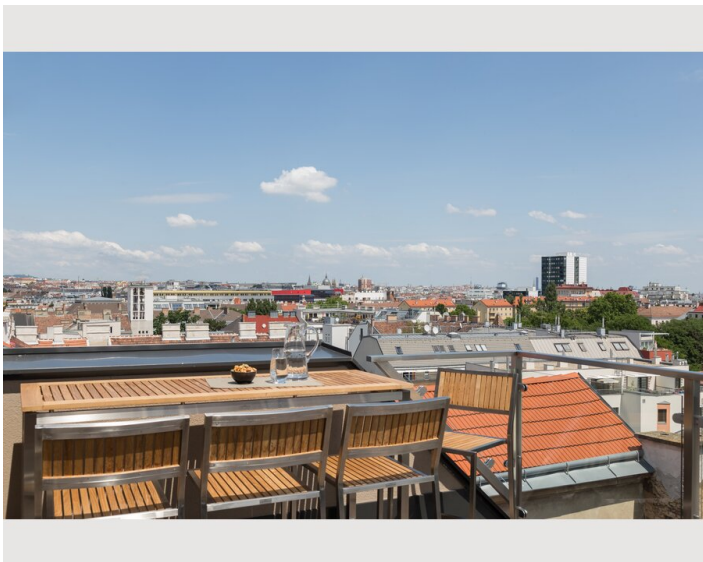
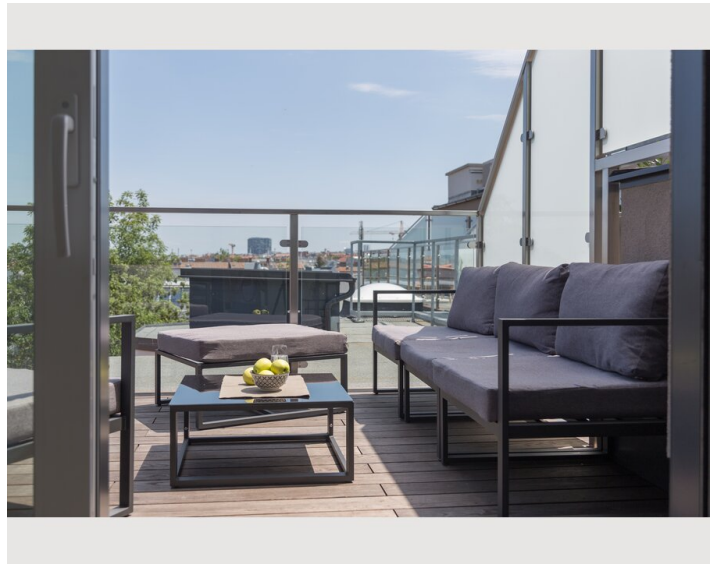
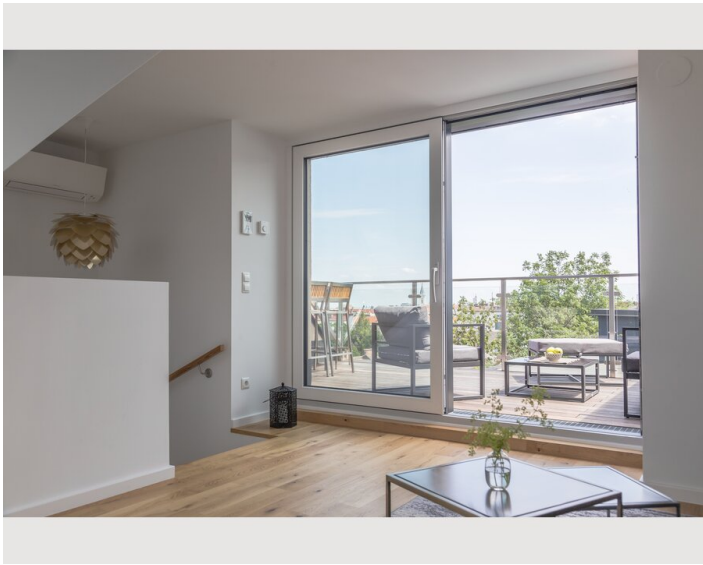
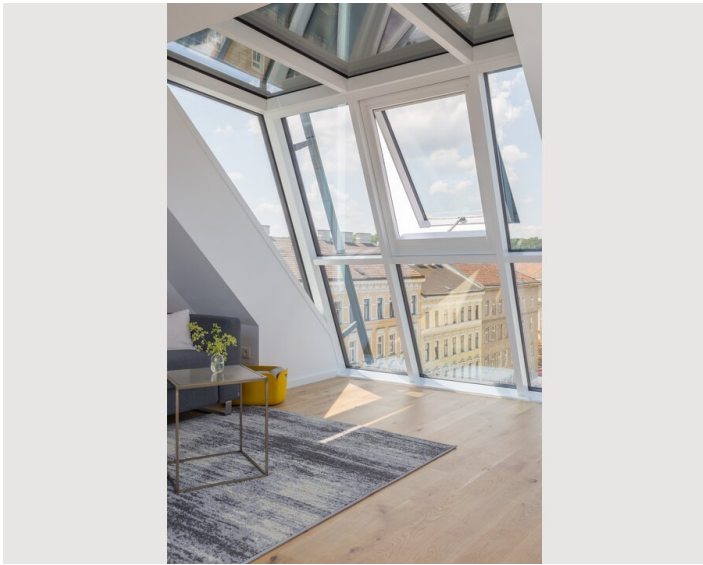
Picture gallery













Infrastructure


 Metro U4 Meidling Hauptstraße


 Metro U6 Niederhofstraße

 10A , 59A , 7A

 16 minutes to Karlsplatz

 1 h 30: S2/S7/U4 or 1h 15: RJ/S1

 5 Minutes to Hofer, Aldi, Meidling shopping street, Interspar

 Numerous good national and international restaurants (Marengo, Gastro Fisch Brač, Staffler...)

The connection to the public transport network is excellent. The stations U4 Meidlinger Hauptstraße, U6 Niederhofstraße and Bahnhof Meidling can be reached in a few minutes on foot. There are also numerous bus lines available. The surrounding local supply options can be rated as very good due to the pedestrian zone Meidlinger Hauptstraße, various supermarkets and shops as well as the Meidlinger weekly market.

The extensive Schönbrunn area with castle park, Gloriette and zoo, as well as the Theresienbad are a unique recreational area within walking distance.

Location

