



HOUSE, 5161 ELIXHAUSEN

TOP-equipped corner terraced house in Elixhausen near Salzburg

Object number: GAHC1

[View and rent online](#)

Attractive short-term residential property in an ideal geographical location not far from Salzburg, the city of Mozart, in the immediate vicinity of the picturesque lakes of the Salzburg Lake District.

Period	17/04/ - 17/05/2026
Number of persons	2
Total incl. VAT.	€ 2.766,04
Deposit	€ 2.100,00



Living space

130m²



Maximum occupancy

4 Persons



Complete accommodation [?]

1 private bathroom 2 Separated bedrooms



Ground floor



Check-in

07.00 - 22.00



Check-out

07.00 - 22.00

Sleeping options

Bedroom 1



1x Double bed (min. 1,80 m x
2 m)

Bedroom 2



1x Double bed (min. 1,40 m x
2 m)

Descripton of accommodation

The comfortably furnished corner row house offers a living space of approx. 130 m² and has a winter garden with underfloor heating and gallery on the first floor. You can let your mind wander in the quiet garden with comfortable seating. On the ground floor there is a spacious anteroom with a guest toilet. From the ground floor you reach the fully equipped basement with washing machine, drying room, pantry and a small workshop for hobbyists. The open-plan living-dining area has a new, modern kitchen with high-quality branded appliances (fridge with beverage drawer, steam oven, oven with warming drawer, dishwasher, electric stove, Nespresso coffee machine, coffee machine for filter coffee, internet radio, underfloor heating, etc.). The living room is equipped with a comfortable leather suite, a cozy tiled stove, TV and dining area. Free WiFi available.

On the first floor there is the bathroom with bathtub and shower with a large window and the two very quiet and spacious bedrooms with solid wood furnishings. The first double room is equipped with a walk-in closet, the second has a small sofa, TV and radio. A special highlight is the access to the gallery above the winter garden with a wonderful view of the surrounding mountains and Maria Plain near Salzburg.

The maximum occupancy is 4 people.

Equipment & Features



Basic equipment

- Garden
- TV
- Bedclothes
- Private toilet
- Garage
- Iron & ironing board
- Hairdryer
- Internet/Wifi
- Private washing machine
- Towels
- Private parking space
- Vacuum cleaner
- Cleaning utensils



Fireplace

- Tiled stove



First supply

- Toilet paper
- Soap
- Fridge filling on request
- shampoo
- Nespresso capsules



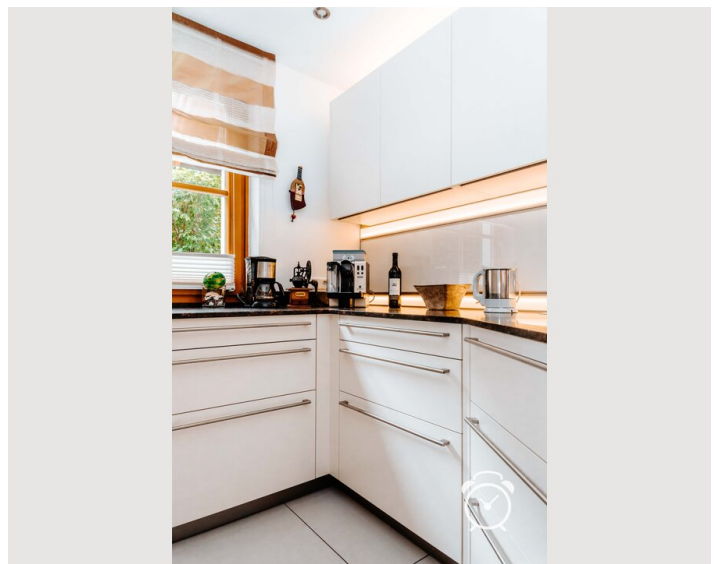
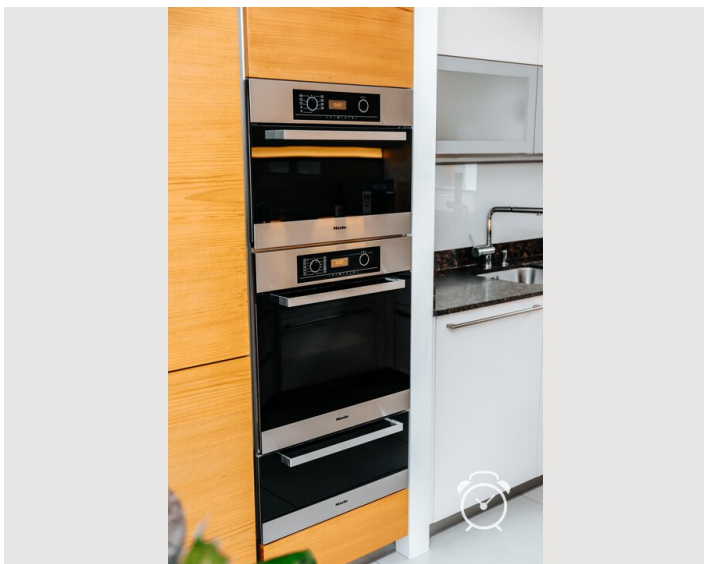
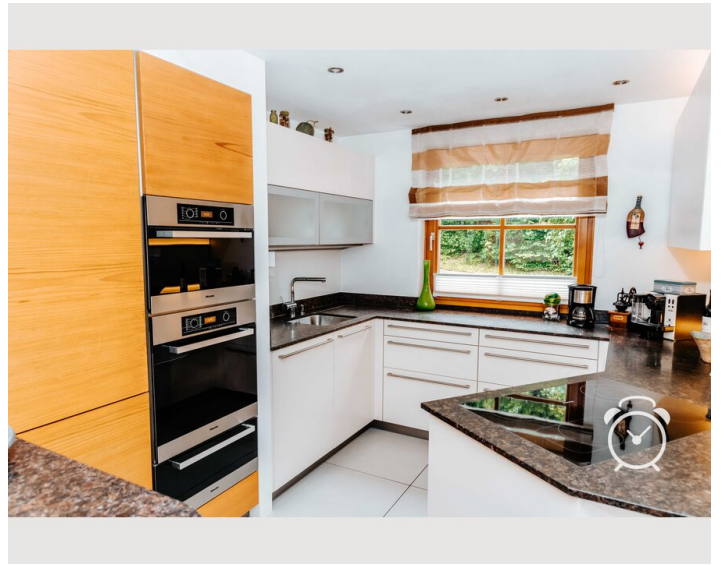
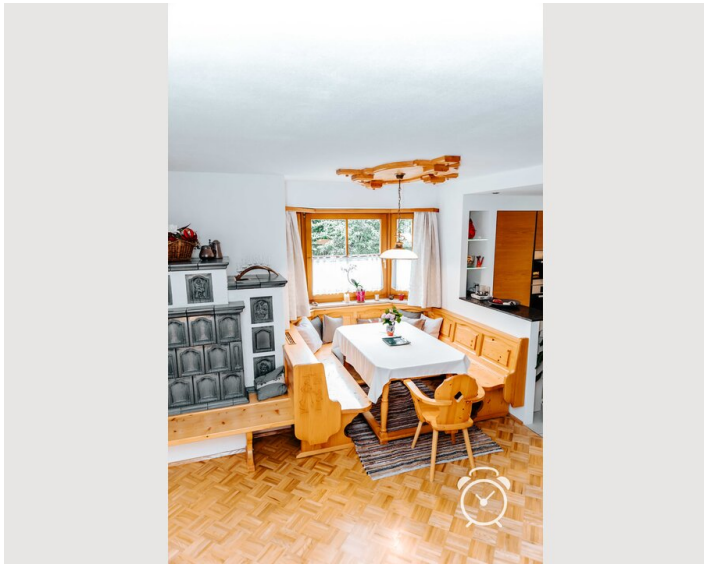
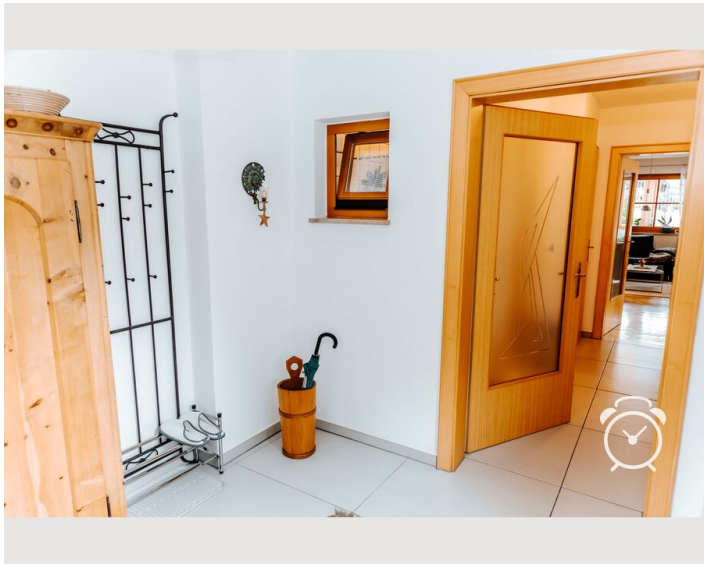
Kitchen

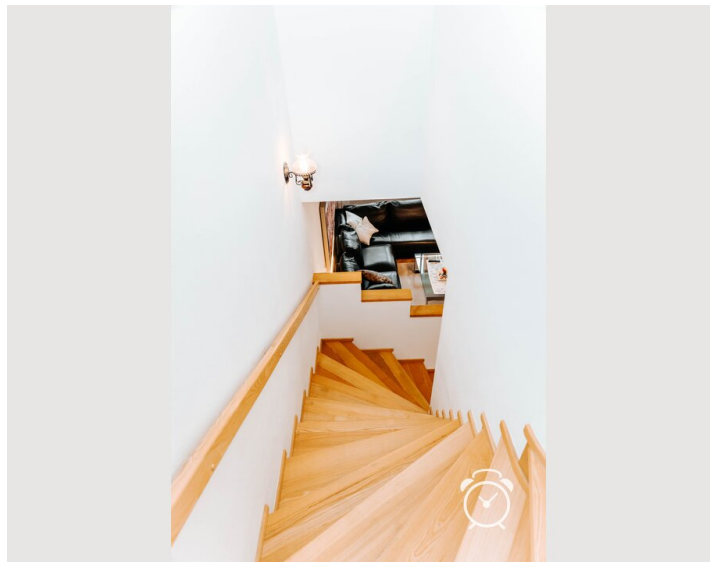
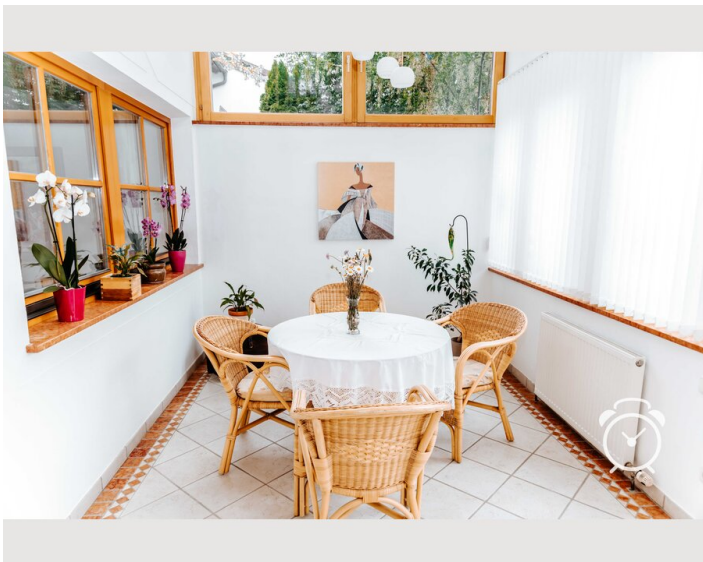
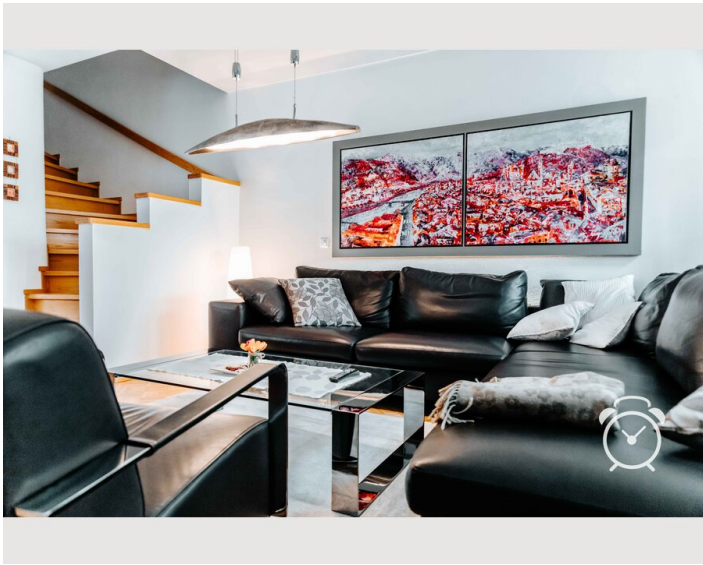
- Private kitchen
- Glasses/Tableware
- Filter coffee
- Steam cooker
- Cooking utensils
- Espresso machine
- Dishwasher

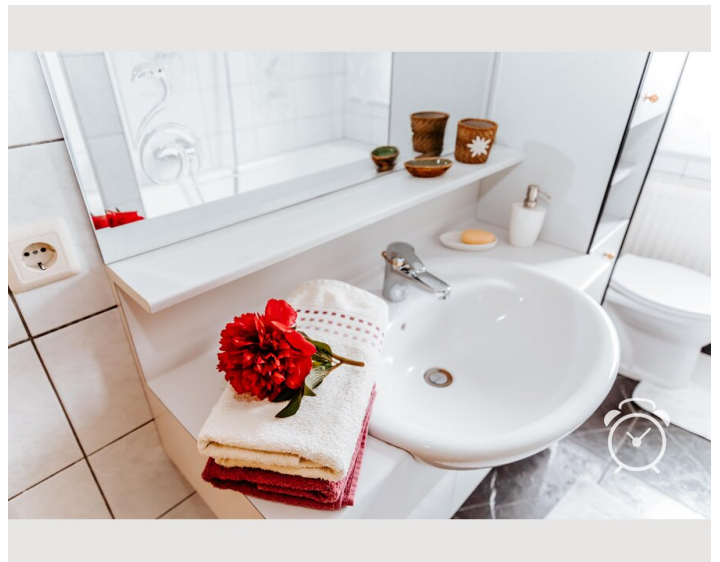
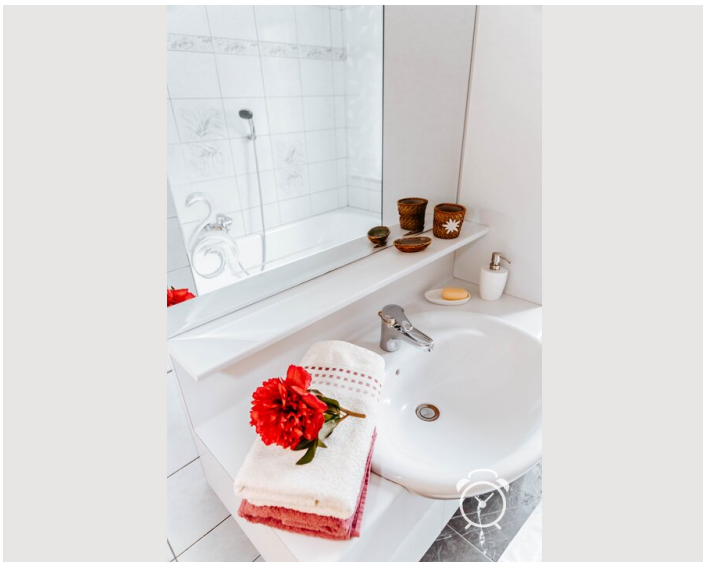
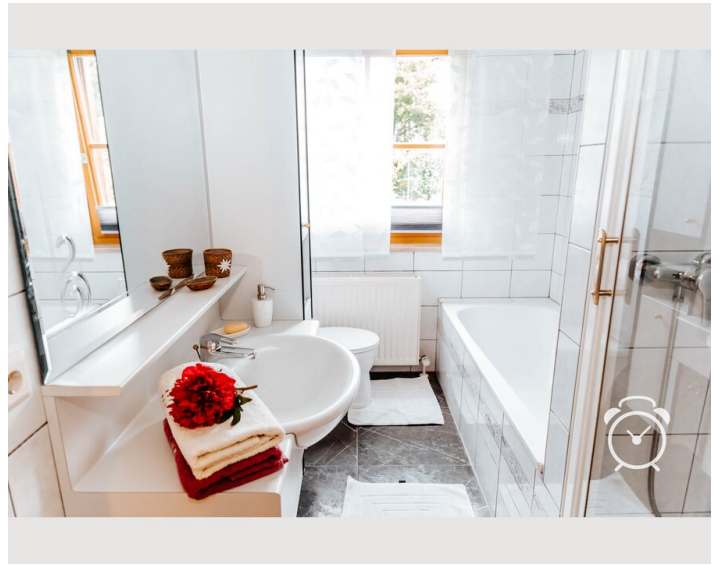
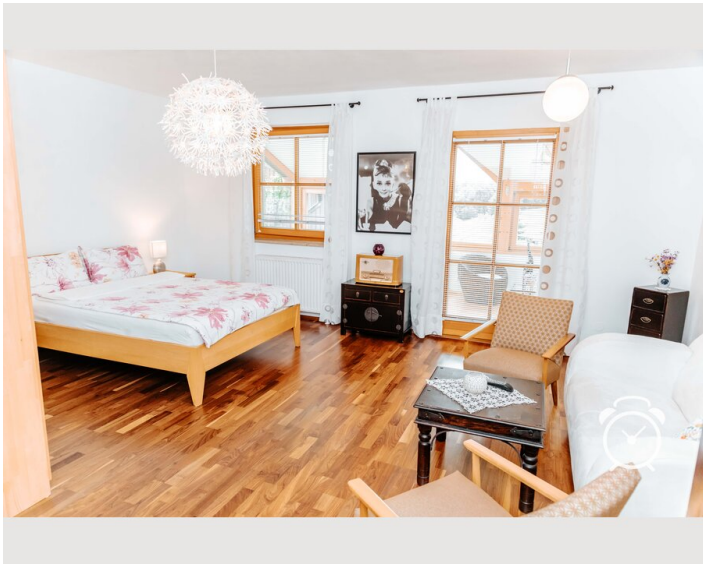
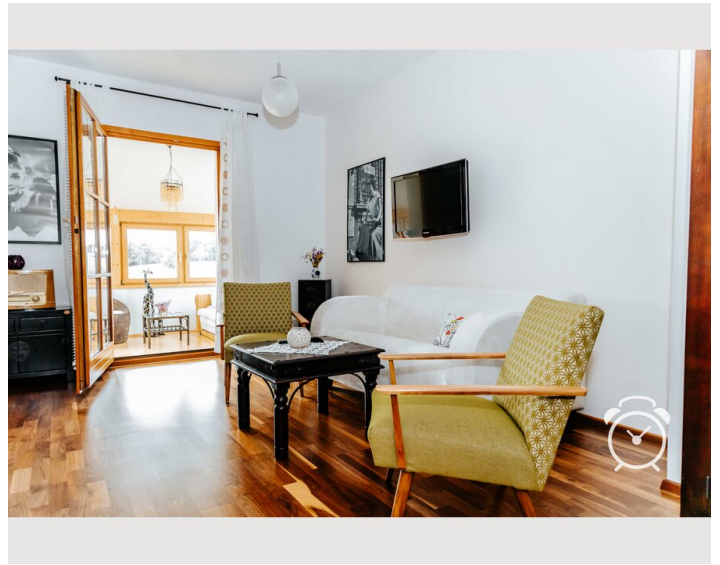
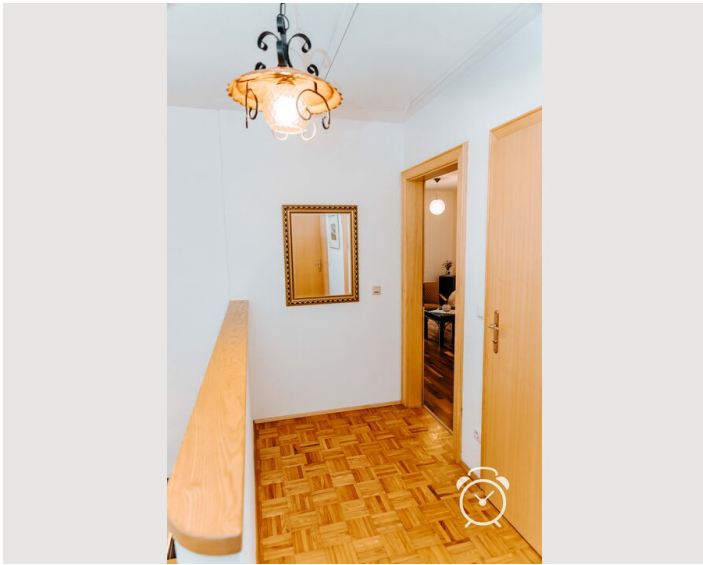
Informations

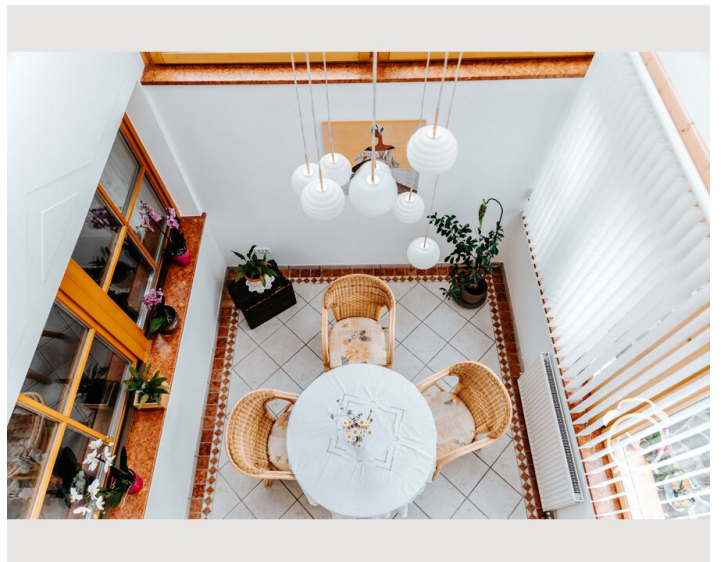
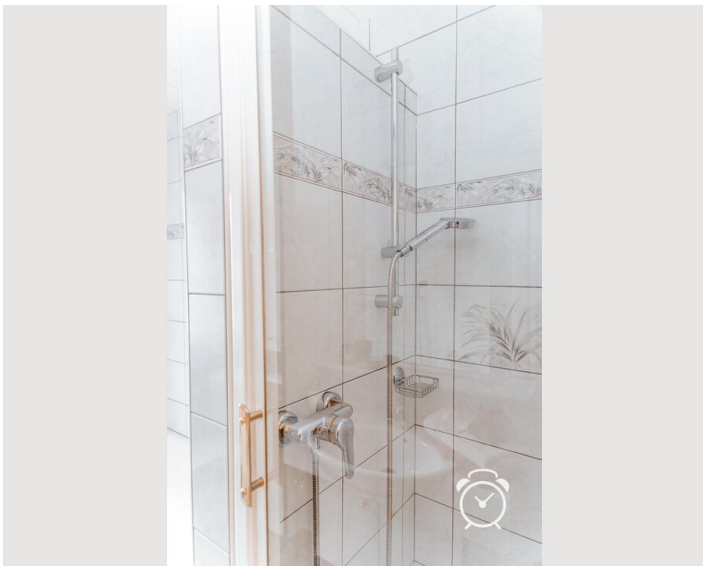
- Suitable for children
- Free short-term parking zone
- Pets forbidden
- Bicycle room free of charge
- Smoking not allowed
- Private entrance
- Regular cleaning at extra cost

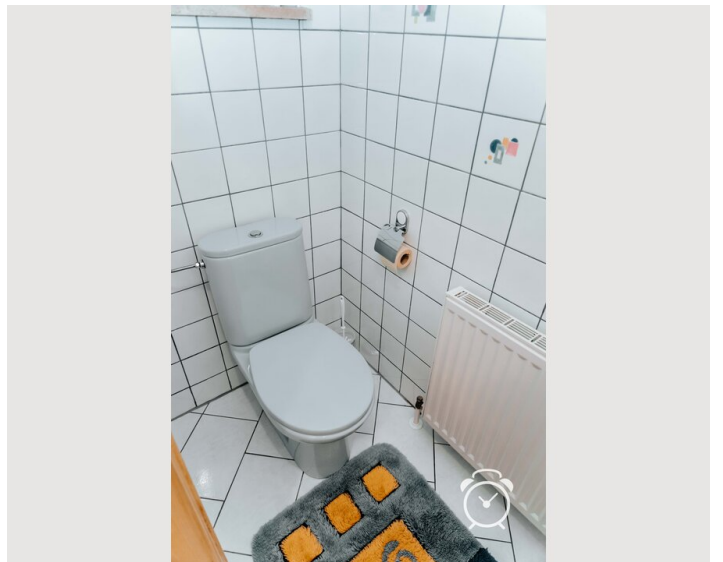
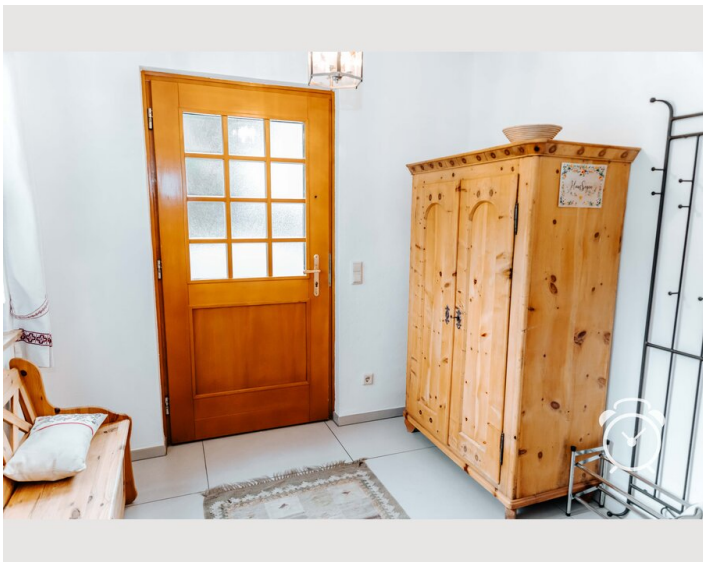
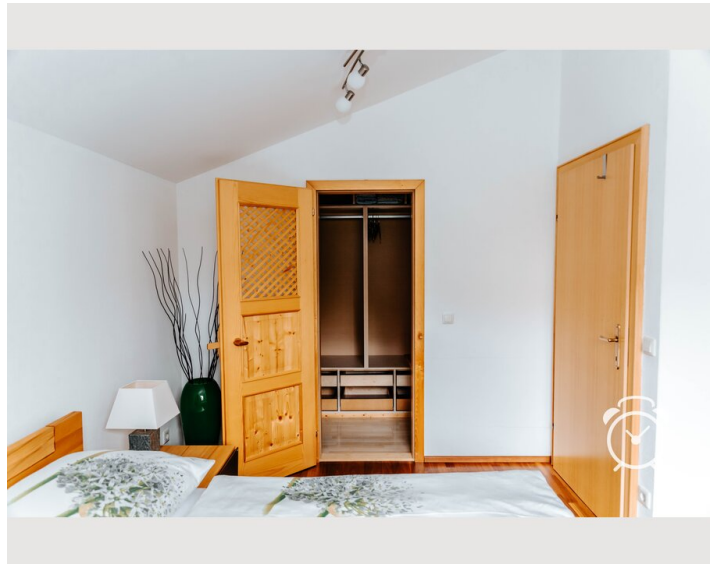
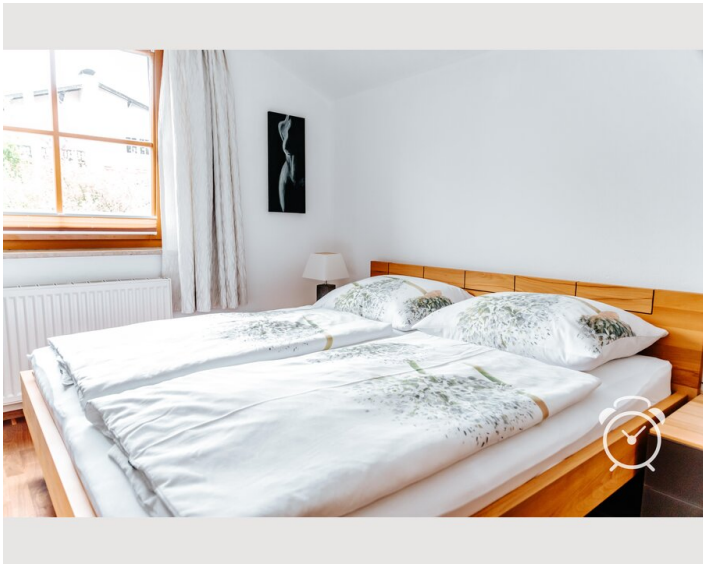
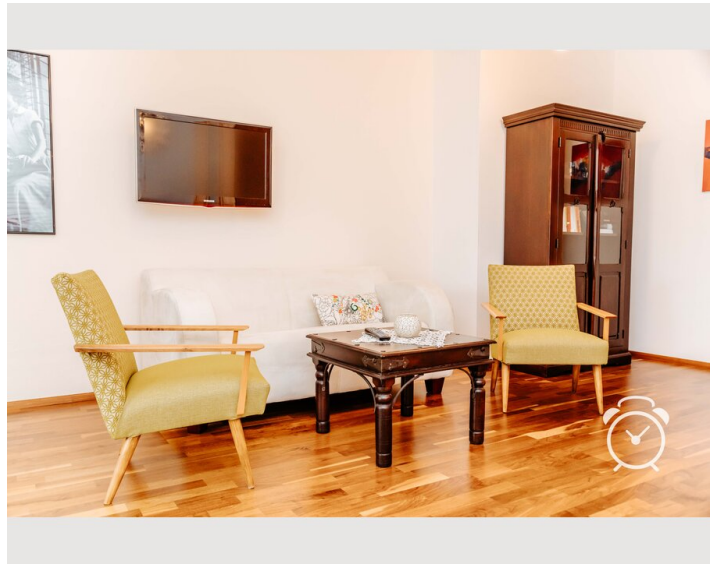
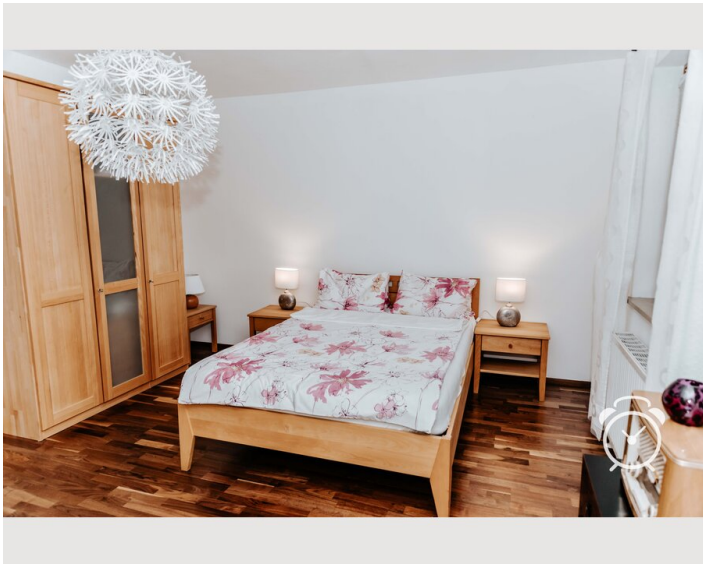
Picture gallery

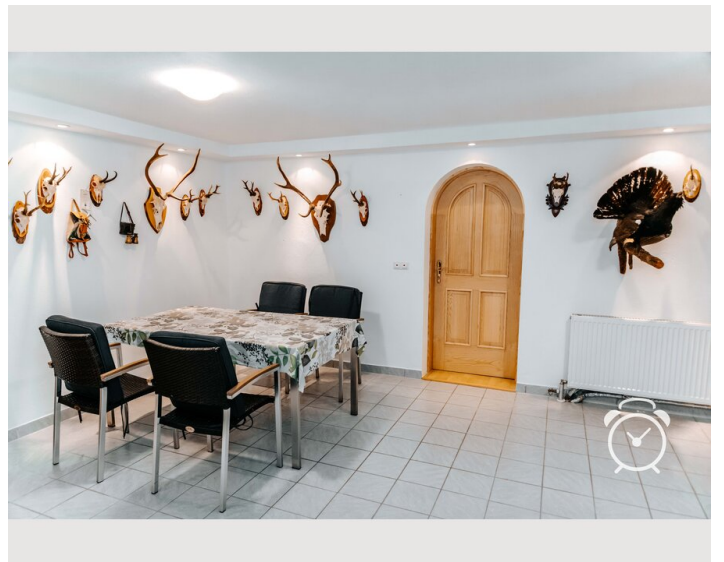
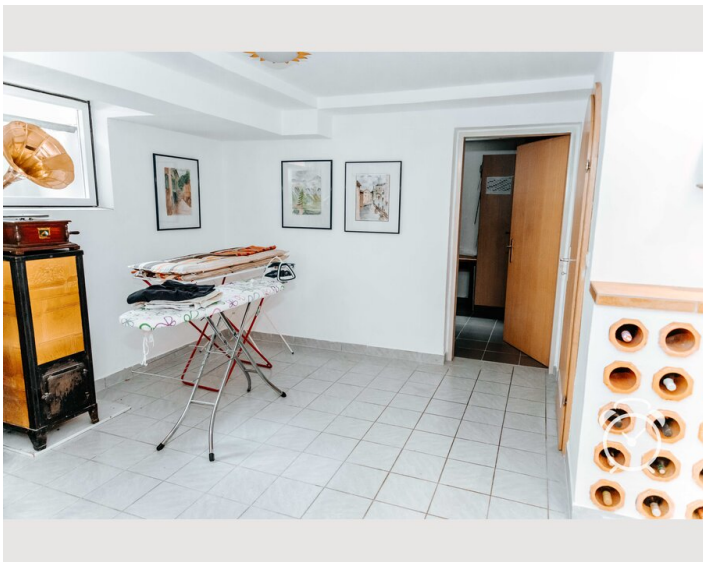
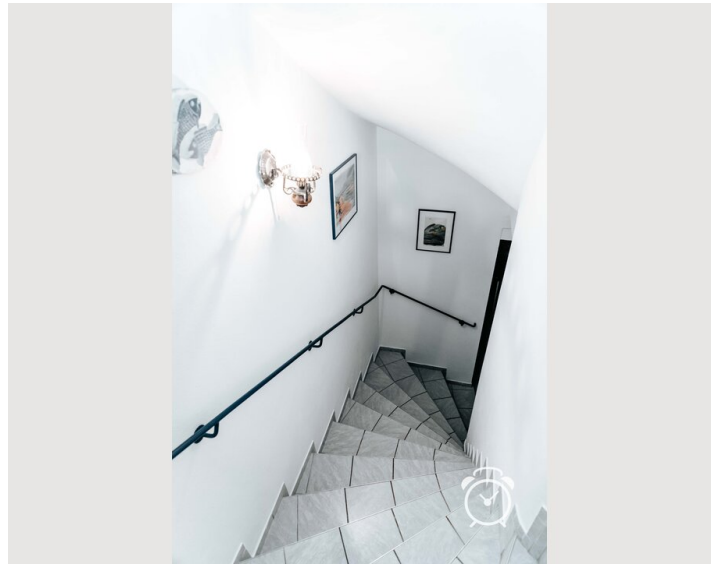
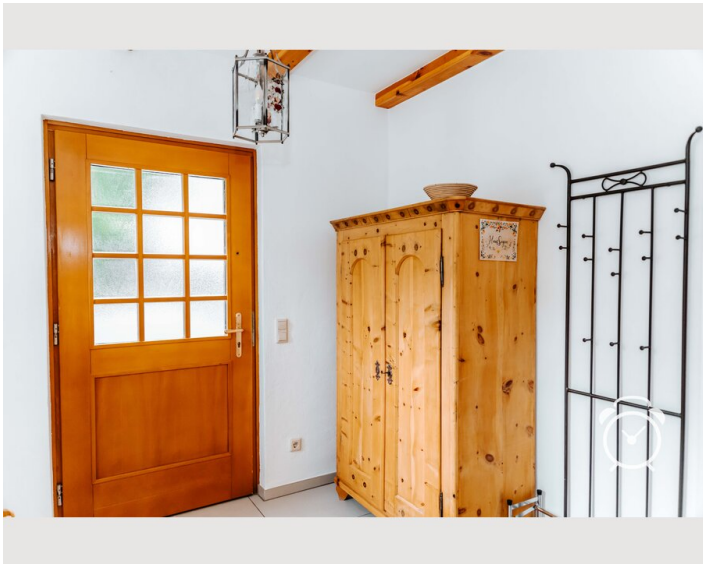
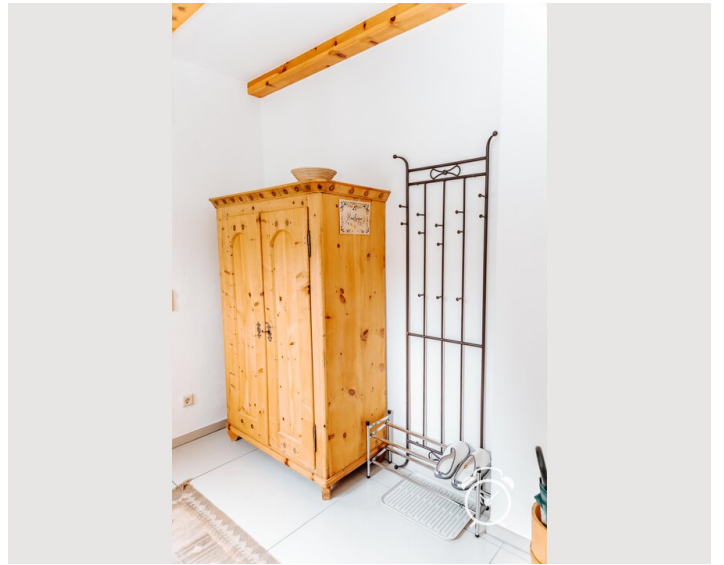


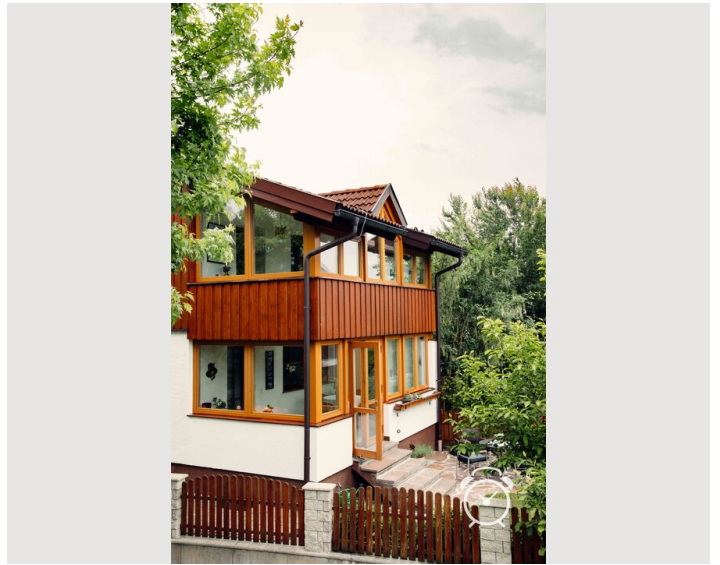
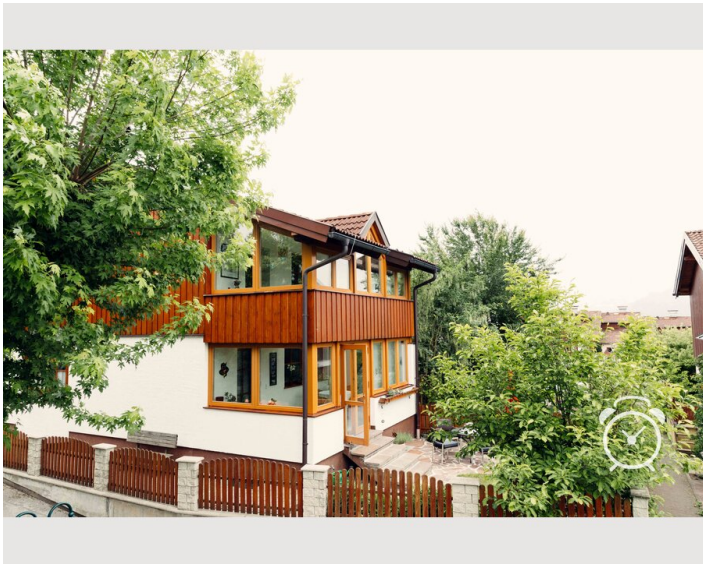
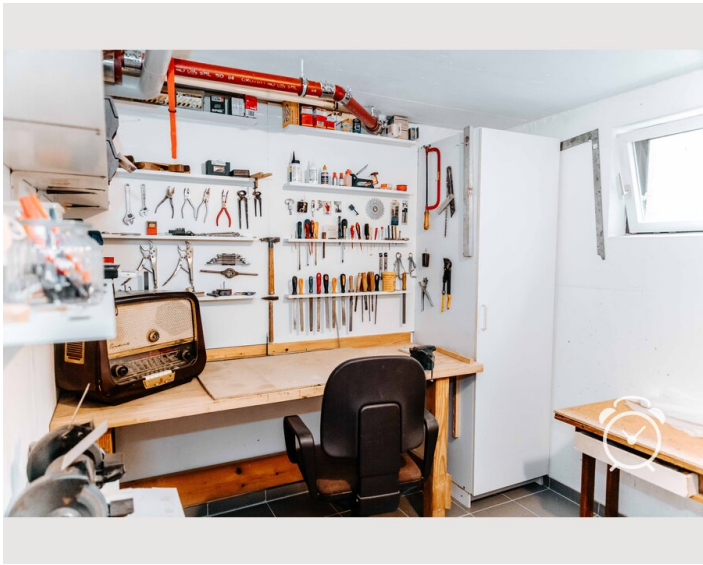













Video


acco.expose.to Video





Infrastructure

 5 min

 20 to 25 min

 10 to 15 min

 5 minutes walk

 Salzburg city center approx. 15 min

The excellent bus connection and convenient location (8 km to the city center, 7 km to Salzburg Central Station, 5 km to the Salzburg-Nord motorway exit, 12 km to Salzburg Airport, 7 km to the exhibition center, 9 km to the Red Bull Arena, 5 km to the Salzburg Lake District) make Elixhausen a particularly popular place to live. The city center can be reached by bike in about 30 minutes (e-bike rental in town).

The place offers a very good infrastructure with two supermarkets, bakery, meat shop, pharmacy, doctors, several restaurants and pizzerias, sports field, tennis court, riding stable, hairdresser, cultural institutions, school and kindergarten, crèche, all within walking distance. The municipality is characterized by the landscape with the typical farmsteads and hamlets. The place is the starting point for several hiking and biking trails.

Location

