



2 ZIMMER WOHNUNG, 1030 VIENNA

## Quiet business apartment in central Vienna

Object number: WOOS2

[View and rent online](#)

<b>Period</b>	28/06/ - 28/07/2026
<b>Number of persons</b>	2
<b>Total incl. VAT.</b>	€ 1.166,00
<b>Deposit</b>	€ 900,00



### Living space

41m<sup>2</sup>



### Maximum occupancy

4 Persons



### Complete accommodation <sup>?</sup>

1 private bathroom 1 Separated bedroom



### Ground floor

Elevator available

## Sleeping options

### Sleeping room



1x Double bed (min. 1,80 m x  
2 m)



1x Sofa bed (2 persons)

## Description of accommodation

Nestled in the heart of Vienna, this beautifully newly renovated apartment offers the height of convenience, comfort and luxury.

5 minutes (by underground) from St Stephen's Cathedral, within walking distance of the world famous 6km<sup>2</sup> Prater recreational and amusement park, and within easy commuting distance of the city center. The few seconds walk to the underground station U3 Kardinal Nagl Platz, will take you directly to the center and to and from the airport with 25 minutes!

This non-smoking apartment consists of dining area/kitchen with seating for 4, living area with a sofa which converts to a double bed, one bedroom with double bed, and a bathroom with shower. The kitchen is fully equipped with dishwasher, hob, electric kettle and fridge/freezer. The living area has cable TV and internet access. Travel cot can be provided, if requested in advance.

In the surrounding area you will find restaurants, cafés, supermarkets, bakery, doctors, pharmacy and laundry.

Prices include bed linen, towels, electricity, heating, water, cable TV and WLAN.

## Equipment & Features

### Basic equipment

- Private toilet
- TV
- Towels
- Hairdryer
- Washing machine
- Internet/Wifi
- Bedclothes

### Kitchen

- Private kitchen
- Coffee machine
- Dishwasher
- Glasses/Tableware

## Informations

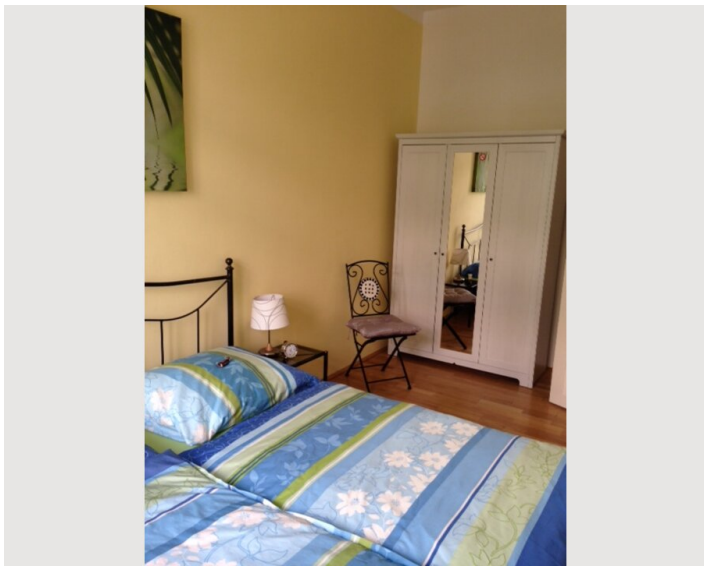
- Smoking not allowed
- Short-term parking zone subject to a charge
- Pets allowed

## Additional services

- Regular cleaning

All prices are gross per month - billing is done directly with the lessor.

## Picture gallery





## Location

