



STUDIO APARTMENT, 1120 VIENNA

Apartment Philadelphia Blue - Close to Railway station Meidling

Object number: LAUN2

[View and rent online](#)

| | |
|--------------------------|---------------------|
| Period | 27/06/ - 27/07/2026 |
| Number of persons | 2 |
| Total incl. VAT. | € 1.527,52 |
| Deposit | € 1.200,00 |



Living space

45m²



Maximum occupancy

2 Persons



Complete accommodation [?]

1 private bathroom 1 Living-Sleepingroom



3. floor

Elevator available



Check-in

13:00 - 19:00



Check-out

05:00 - 11:00

Sleeping options

Living and sleeping



1x Double bed (min. 1,80 m x
2 m)

Description of accommodation

For your decision guidance here some information about the apartment's facilities:

Nice, small, charming apartment consisting of lobby, small kitchen, bed-livingroom, shower, toilet, store room. Newly furnished, bright and high rooms in a totally renewed house in the "Wilhelminian style" built 1901.

You have a little coffee table in the kitchen with window to the east (sun in the morning), also you have dining and working table in the room. There you have the windows to west (sun in the afternoon).

For your convenience you have a towel-heating in the bathroom and in the little store room (for your luggage) you will find things like umbrella, bulbs, first aid box, cleaning facilities, etc.....

As a long term guest you will have access to our laundry in the house with washing machines and dryers.

For guests coming with car we offer a place in our garage for Euro 100,00/month, or daily rent: 10,00/day incl. taxes. Cars with max. high of 180cm (~6,5 feet) and max. weight of 2 tons can park in our garage.

Renting the apartment less than 3 months we have to collect 3,2% city tax of the rental price for the Vienna government.

In short walking distance you have shops, parks, sport areas (golf place, public pools, thermal pools).

The public transportation around our flat is very good. You have underground, busses, trams and within maximum 15-20 minutes you will be nearly on each location in Vienna you want to go.

Equipment & Features



Basic equipment

- Internet/Wifi
- Community washing machine
- Bedclothes
- Private toilet
- Vacuum cleaner
- Cleaning utensils
- TV
- Community dryer
- Towels
- Garage
- Iron & ironing board
- Hairdryer



First supply

- Toilet paper
- Nespresso capsules
- Soap



Kitchen

- Kitchenette
- Glasses/Tableware
- Filter coffee
- Cooking utensils
- Espresso machine
- Microwave

Informations

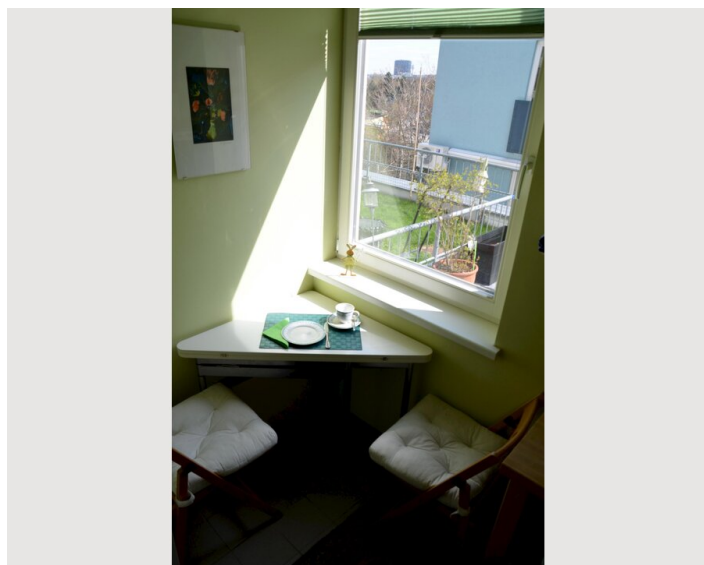
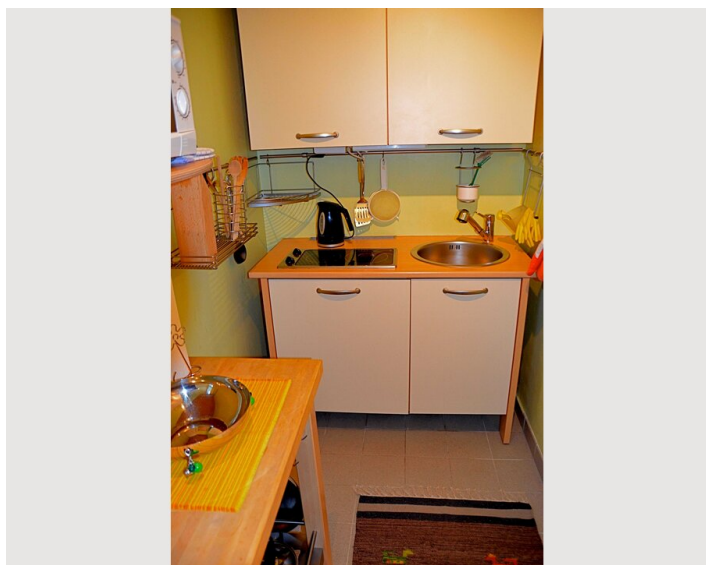
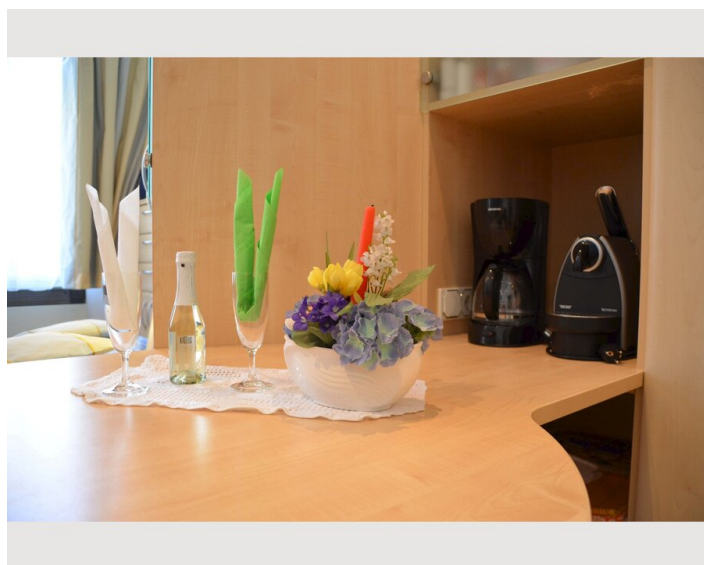
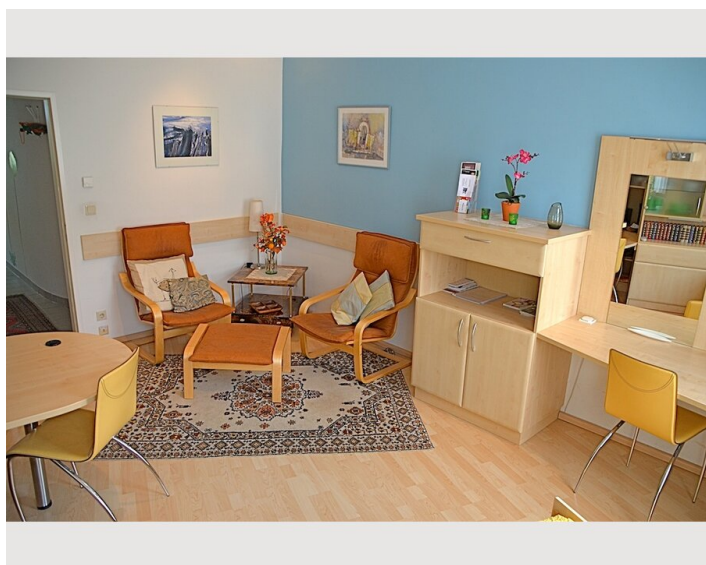
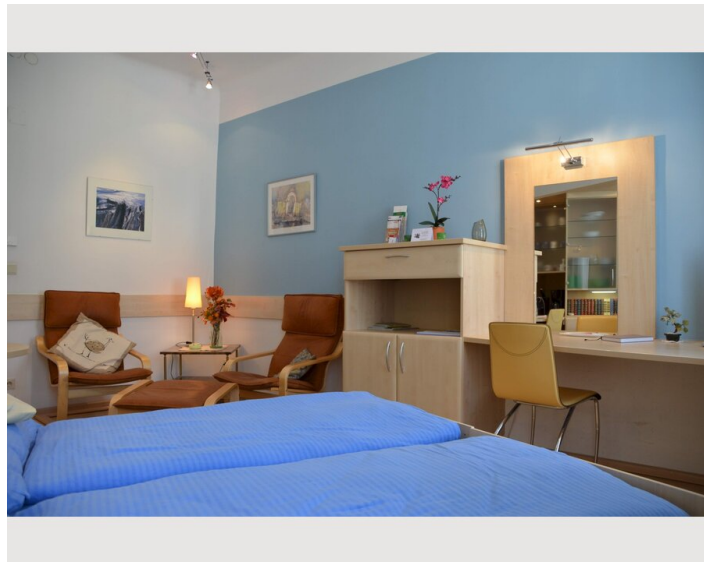
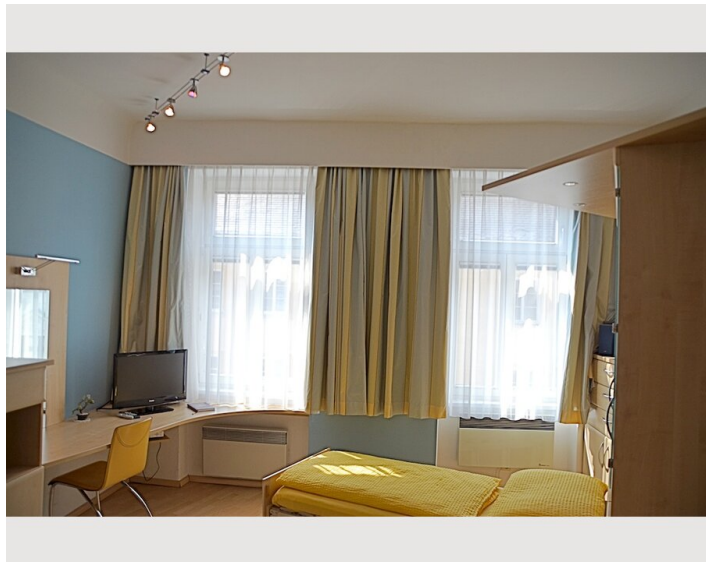
- Suitable for construction workers
- Smoking not allowed
- Desk/Workplace
- Pets forbidden
- Bicycle room free of charge
- Not suitable for children
- Short-term parking zone subject to a charge
- Private entrance
- Regular cleaning at extra cost

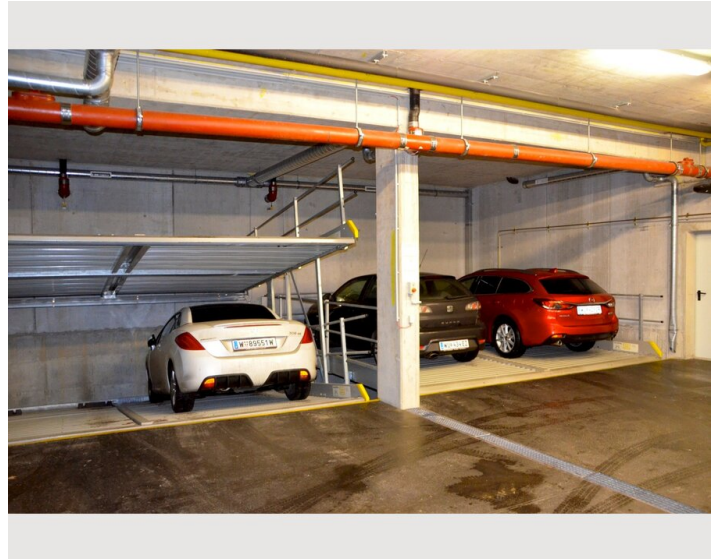
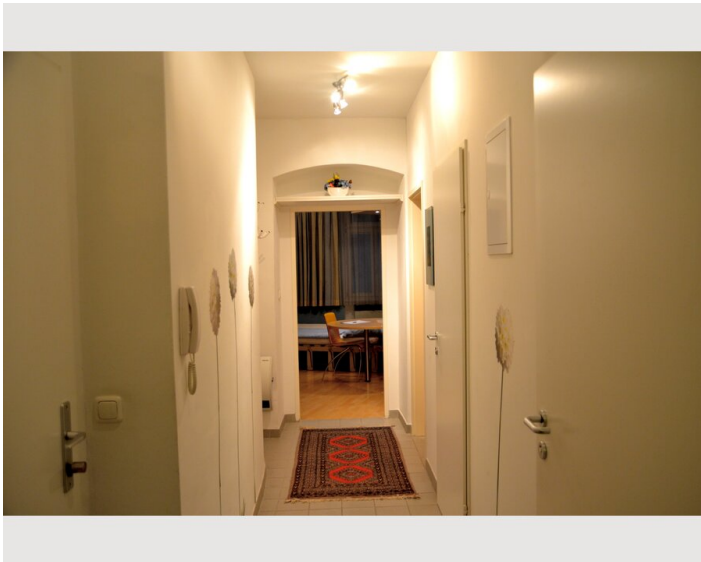
Additional services

- Garage

All prices are gross per month - billing is done directly with the lessor.


Picture gallery








Infrastructure

 Meidling with underground U6 approx. 200 m distance

 several busses and trams, underground, about 100m distance

 several trains from station Meidling. Time, about 30 minutes

 with underground and/or bus/train within 20 min.

 just crossing "Philadelphia bridge" within 100m distance

Location

