

STUDIO APARTMENT, 4101 FELDKIRCHEN ON THE DANUBE

## DONAUHAUS 30 m<sup>2</sup> Studio, 1 Schlaf-Wohnzimmer, 2 single beds, 1 couch, 1 bathroom, kitchenette

Object number: LEOL4

[View and rent online](#)

This small but nice studio apartment in a prime location directly on the Danube is the ideal place for relaxation or living in a private atmosphere.

<b>Period</b>	17/04/ - 17/05/2026
<b>Number of persons</b>	2
<b>Total incl. VAT.</b>	€ 1.813,24
<b>Deposit</b>	€ 1.400,00



### Living space

30m<sup>2</sup>



### Maximum occupancy

3 Persons



### Complete accommodation <sup>?</sup>

1 private bathroom 1 Living-Sleepingroom



### Ground floor



### Check-in

08:00 - 20:00



### Check-out

08:00 - 11:00

## Sleeping options

### Living and sleeping



2x Single bed



1x Sofa bed (1 person)

## Descripton of accommodation

A separate kitchenette and bathroom with shower, sink and toilet, a separate entrance and use of the beautiful garden ensure privacy.

The opposite sandy beach on the Danube is a great way to soak up the sun in the summer and cool off in the Danube. Super divided small apartment, own garden

## Equipment & Features



### Basic equipment

- Garden
- TV
- Private dryer
- Towels
- On the road without time limit without any cost
- Iron & ironing board
- Hairdryer
- Internet/Wifi
- Private washing machine
- Bedclothes
- Private toilet
- Vacuum cleaner
- Cleaning utensils



### Fireplace

- Charcoal grill



### First supply

- Toilet paper
- Fridge filling on request



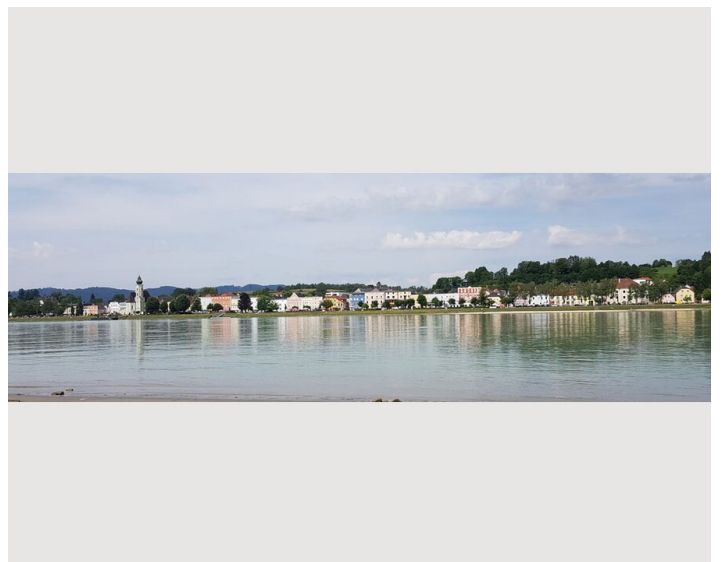
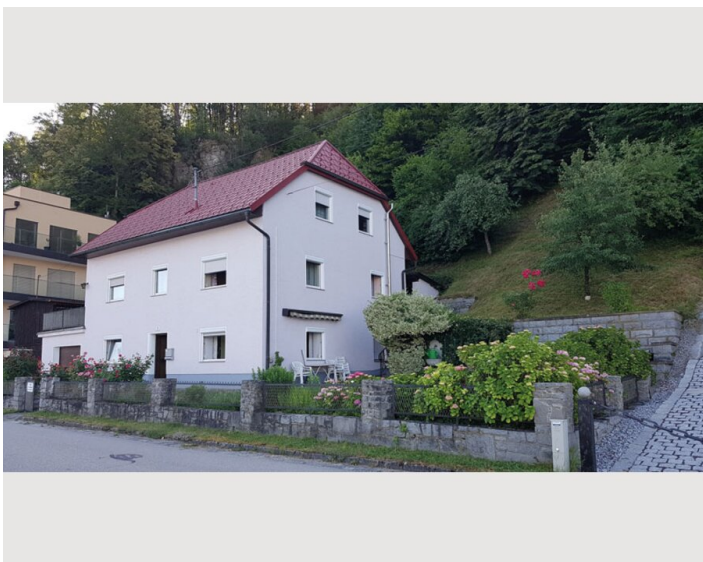
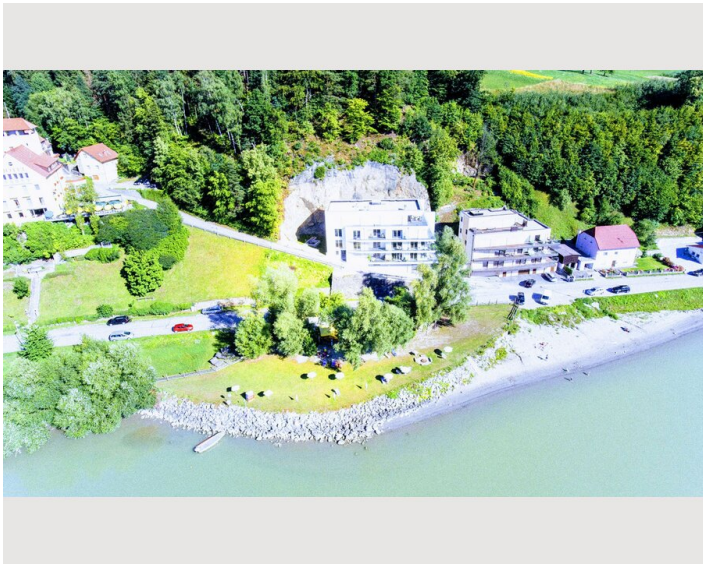
### Kitchen

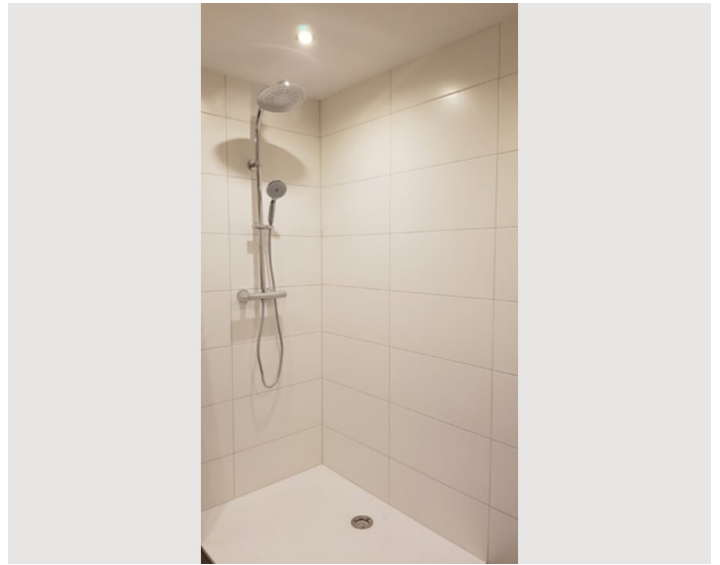
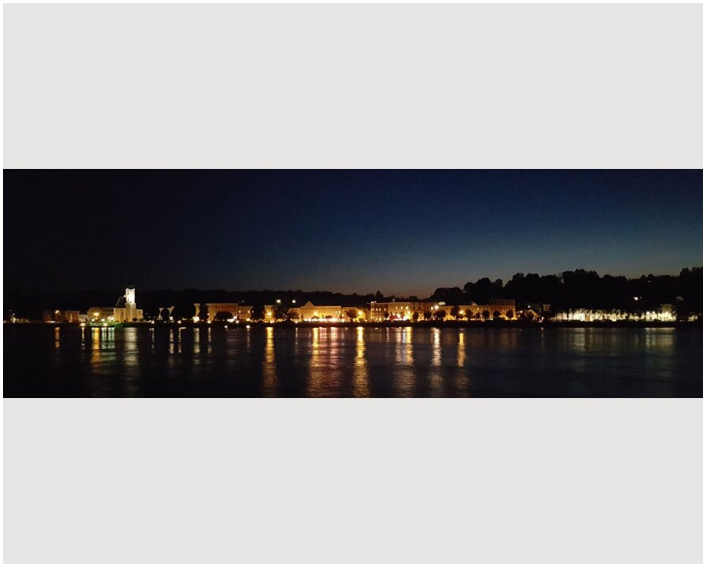
- Kitchenette
- Glasses/Tableware
- Dishwasher
- Cooking utensils
- Espresso machine
- Microwave

## Informations

- Suitable for construction workers
- Smoking not allowed
- Private entrance
- Regular cleaning free of charge
- Suitable for children
- Desk/Workplace
- Pets forbidden
- Bicycle room free of charge

## Picture gallery






### Infrastructure

 distance 500m

 Danube Airport Linz 20km

 Hauptbahnhof Linz 30km

 BILLA 2km, LIDL, HOFER/ALDI 10km

---

Right next to us is the legendary Faustschlössl, which houses a hotel and restaurant. On the other side of the Danube in Aschach there are many cafes and ice cream parlors as well as shopping opportunities.

**Location**

