



4 ROOM APARTMENT AND MORE, 4101 FELDKIRCHEN ON THE DANUBE

## DONAUHAUS: 200 m<sup>2</sup> Apartment, 6 bedrooms, 15 single beds, 2 bathrooms, kitchen, roof terrace

Object number: LEOD2

[View and rent online](#)

This large apartment for up to 15 people in single beds is located directly on the beautiful Danube with a public sandy beach.

|                          |                     |
|--------------------------|---------------------|
| <b>Period</b>            | 17/04/ - 17/05/2026 |
| <b>Number of persons</b> | 2                   |
| <b>Total incl. VAT.</b>  | € 4.521,10          |
| <b>Deposit</b>           | € 3.300,00          |



### Living space

200m<sup>2</sup>



### Maximum occupancy

15 Persons



### Complete accommodation <sup>?</sup>

2 private bathrooms 6 Separated bedrooms



### 1. floor



### Check-in

08:00 - 20:00



### Check-out

08:00 - 11:00

## Sleeping options

### **Bedroom 1**



3x Single bed

### **Bedroom 2**



4x Single bed

### **Bedroom 3**



2x Single bed

#### **Bedroom 4**



2x Single bed

#### **Bedroom 5**



2x Single bed

#### **Bedroom 6**



2x Single bed

#### **Descripton of accommodation**

The magnificent location and the fact that it is located in a little-used dead end makes it a relaxing oasis of peace. The huge kitchen, 3 bathrooms with showers and 4 toilets complete the offer. The roof terrace offers a breathtaking view of the Danube and the beautiful town of Aschach

Large rooms that can be equipped with single or double beds. Wonderfully large roof terrace overlooking the Danube and the pretty town of Aschach with its historic facades.

## Equipment & Features



### Basic equipment

- Roof-terrace
- TV
- Private dryer
- Towels
- On the road without time limit without any cost
- Iron & ironing board
- Hairdryer
- Internet/Wifi
- Private washing machine
- Bedclothes
- Private toilet
- Vacuum cleaner
- Cleaning utensils



### Fireplace

- Charcoal grill



### First supply

- Toilet paper
- Fridge filling on request



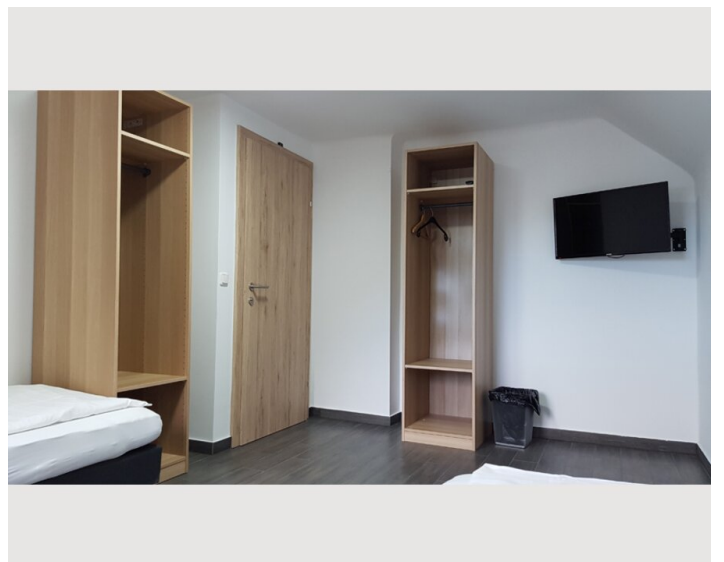
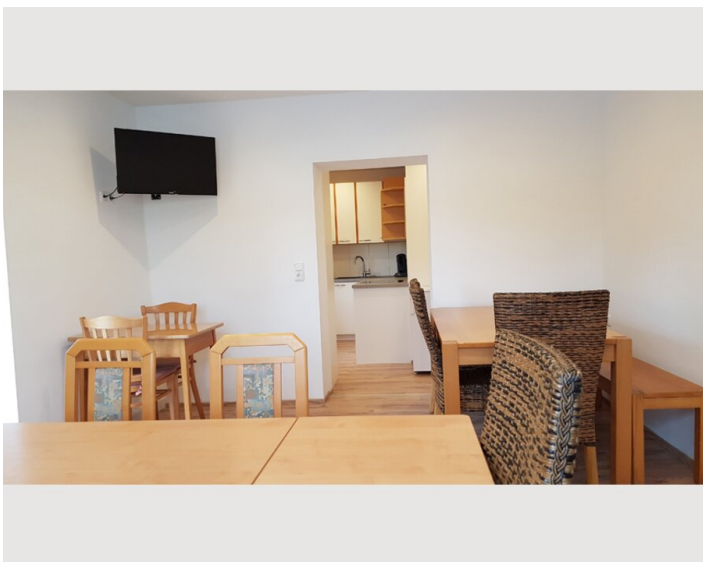
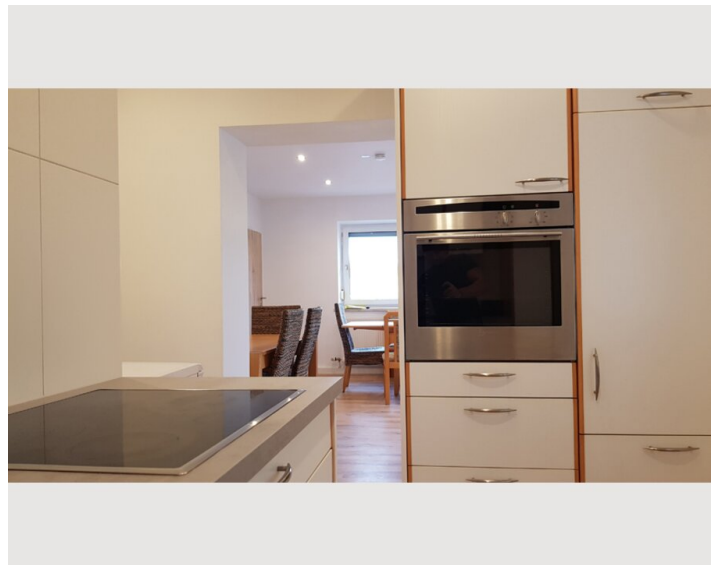
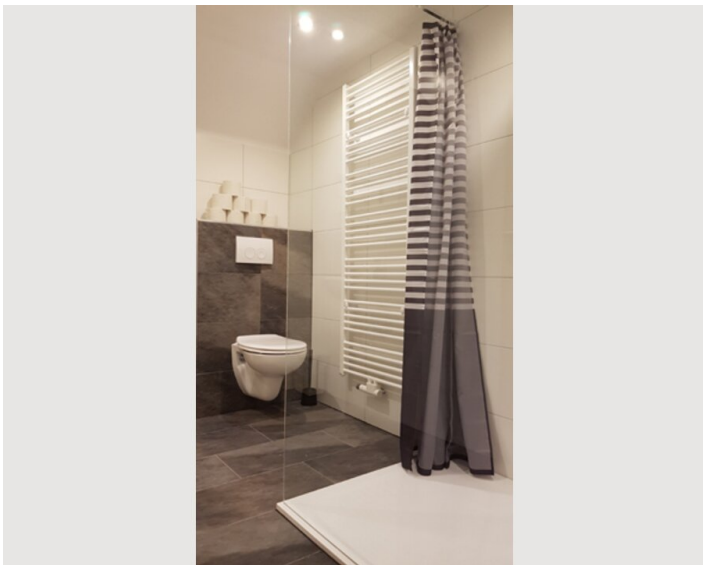
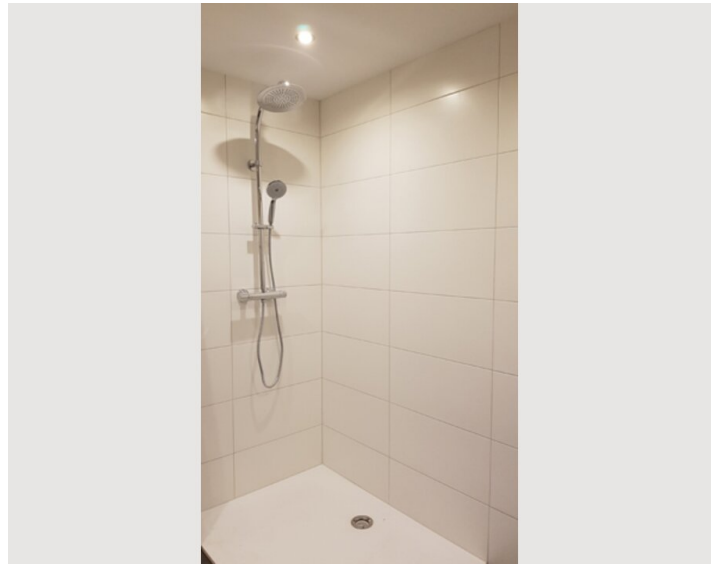
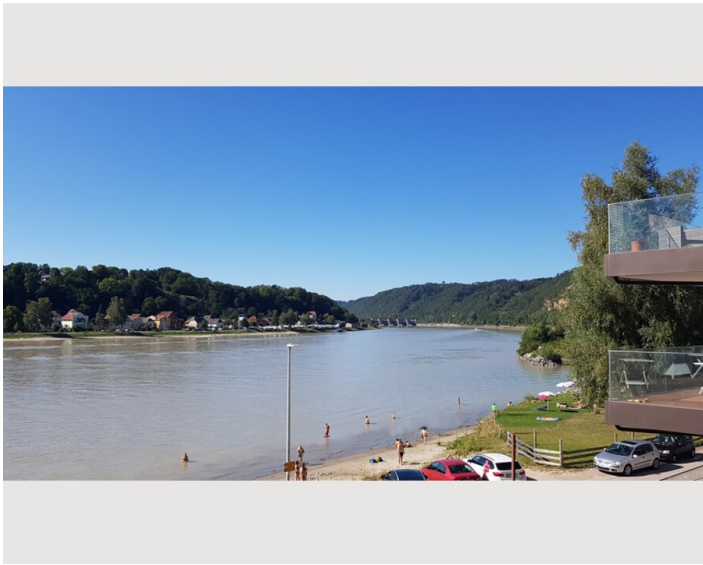
### Kitchen

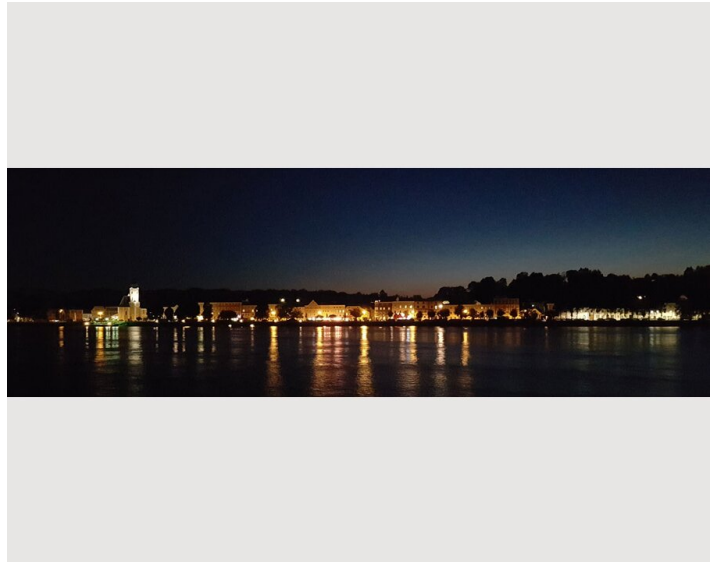
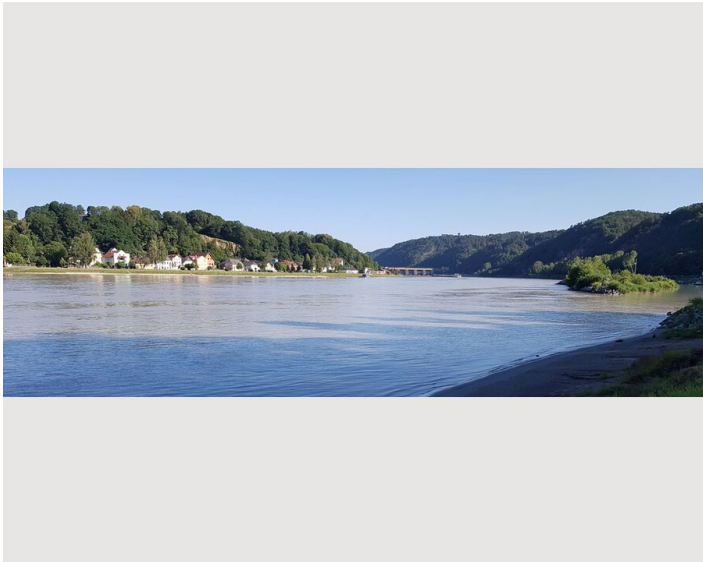
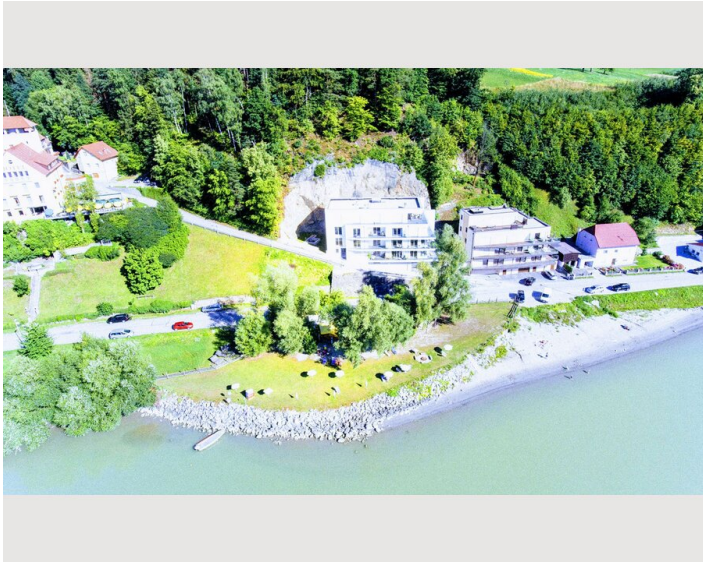
- Private kitchen
- Glasses/Tableware
- Dishwasher
- Cooking utensils
- Espresso machine
- Microwave

## Informations

- Suitable for construction workers
- Smoking not allowed
- Private entrance
- Regular cleaning free of charge
- Suitable for children
- Desk/Workplace
- Pets forbidden
- Bicycle room free of charge

## Picture gallery






## Infrastructure

 distance 500m

 Danube Airport Linz 20km

 Hauptbahnhof Linz 30km

 BILLA 2km, LIDL, HOFER/ALDI 10km

The passing river Danube is a wonderful haven of tranquility, which makes you forget the stress. Due to its location in a dead end there is very little traffic. A few meters from our house is the legendary Faustschlössl which houses a hotel and restaurant. The Danube Cycle Path leads right past. The nearest shops (SPAR, BILLA, HOFER, bakery, ...) are located in the vicinity (Max 1 - 2 km) On the other shore, on the Aschacher promenade are numerous excellent cafes and ice cream parlors. Insider tip: Welzer From us you can hike directly into the beautiful Pesenbachtal.

## Location

