



2 ZIMMER WOHNUNG, 1030 VIENNA

Spacious, Furnished Belvedere Apartment

Object number: MARM3

[View and rent online](#)

Ideal apartment for families or 2 couples for a getaway or business travellers. The apartment is next to a direct train line from airport (21 min), and only 5minutes with public transport to the city center.

Period	17/04/ - 17/05/2026
Number of persons	2
Total incl. VAT.	€ 1.381,58
Deposit	€ 1.100,00



Living space

85m²



Maximum occupancy

6 Persons



Complete accommodation [?]

1 private bathroom 1 Separated bedroom 1 Living-Sleepingroom



Ground floor



Check-in

15:00 - 00:00



Check-out

00:00 - 11:00

Sleeping options

Sleeping room



1x Double bed (min. 1,60 m x
2 m)



1x Sofa bed (2 persons)

Living and sleeping



1x Sofa bed (2 persons)

Descripton of accommodation

Spacy (82 sqm / 880 sqf) and quiet apartment in nice area. Walking distance to famous Belvedere Castle and Botanical Gardents. 2 tram stations or one train station from center.

Fantastic location and fully equipped bedroom, living room, kitchen and bathroom. Spacy (82 sqm / 880 sqf) and quiet apartment in nice area. Big rooms and nice and new decoration and furniture (flat was renovated).

Guests have access to all rooms

Parking on the street is free from Monday – Friday 10 pm till 9 am and Weekend Friday 10 pm till Monday 9 am and public holidays. During the other times you have to buy tickets (metro station machines, "Trafik" or use the mobile app "handy parken". Costs are around 1,05 Euro per 30 min (maximum 2 hours)

For garages close by I can send you links and more information. Best ist to use park and ride garage in Erdberg U3 metro station (3,40 Euro/day). For detailed informatino please message me.

Shopping info:

Shops close at 8 pm Monday to Friday and 6 pm on Saturday. Sundays and public holidays are closed. Except for some grocery stores at train stations (Praterstern, Wien Mitte/Landstrasse, Hauptbahnhof, Westbahnhof, Schottentor) and gas stations which are open mostly until 10 pm or even 24 hours (gas stations).

Equipment & Features



Basic equipment

- Internet/Wifi
- Private washing machine
- Towels
- Vacuum cleaner
- Cleaning utensils
- TV
- Bedclothes
- Private toilet
- Iron & ironing board
- Hairdryer



First supply

- Toilet paper
- Soap
- shampoo



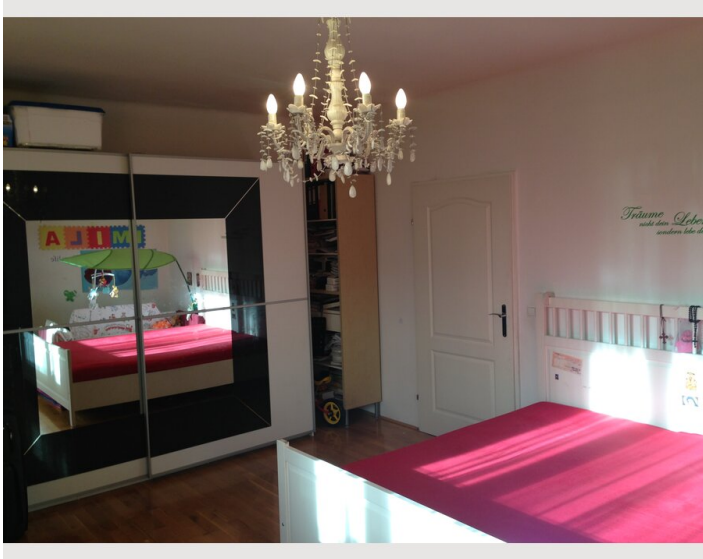
Kitchen

- Private kitchen
- Glasses/Tableware
- Dishwasher
- Cooking utensils
- Filter coffee
- Microwave

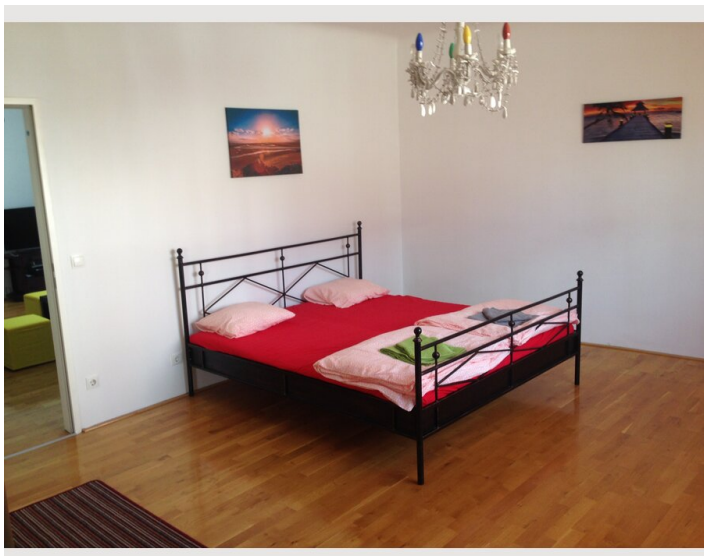
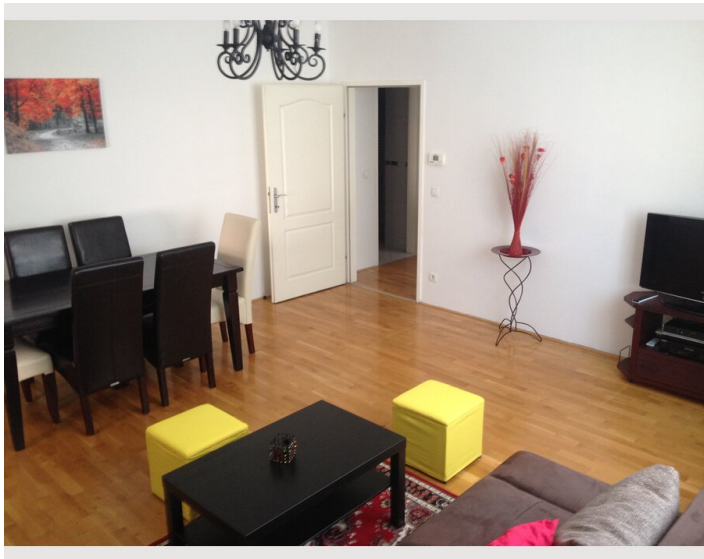
Informations

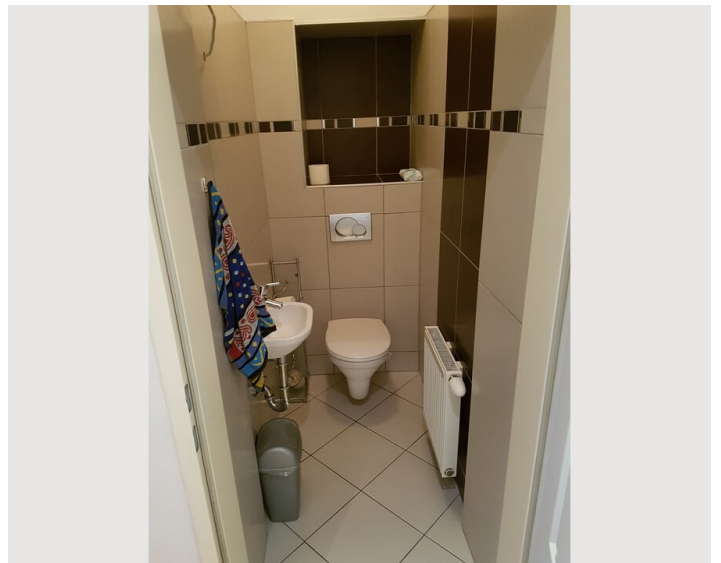
- Suitable for construction workers
- Smoking not allowed
- Private entrance
- Suitable for children
- Desk/Workplace
- Pets on request

Picture gallery










Infrastructure

 "Quartier Belvedere", 5 min by foot

 St. Stephens Cathedral, approx 15min away, 3 stations total with one line change

The apartment is just 5 min walking distance from Belvedere Palace and Botanical Garden.

With tram 71 you reach the center (Schwarzbergplatz and Opera) within a few stations (5 min from station "Rennweg").

The area is a quiet and safe residential area and has a lot of shops and cafes and restaurants on the nearby main streets as well as the train station.

Location

