



3 ROOM APARTMENT, 1030 VIENNA

typical old style vienna apartment

Object number: GEBQ1

[View and rent online](#)

Period	17/04/ - 17/05/2026
Number of persons	2
Total incl. VAT.	€ 1.974,14
Deposit	€ 1.500,00

Cosy and light typical old style vienna 82m² apartment in the heart of vienna only 1 block to the s-train station "Rennweg" and the Palais Belvedere. A directly connection with the train S7 to the airport in 20 minutes



Living space

82m²



Maximum occupancy

6 Persons



Complete accommodation [?]

1 private bathroom 2 Separated bedrooms



2. floor

Elevator available



Check-in

14:00 - 18:00



Check-out

09:00 - 11:00

Sleeping options

Bedroom 1



1x Double bed (min. 1,80 m x
2 m)



1x Sofa bed (1 person)

Bedroom 2



1x Double bed (min. 1,60 m x
2 m)



1x Sofa bed (1 person)

Descripton of accommodation

Living- & Sleepingroom

big and light apartment with fish parquet floor, chandelier and big folding doors in typical vienna style.

In the kitchen there is a table with 4 chairs, fridge and all what u need to prepare your breakfast, lunch or dinner. The big rooms à 23m² are equipped with a double bed, big couch, table chair, cupboard and a TV.

The bathroom with a bathtub in the corner and a basin as well as a small shelf is as well in a classic style. There is a separate toilette with a unique flair.

A dressing room contains an big cupboard.

Equipment & Features

Basic equipment

- Internet/Wifi
- Bedclothes
- Private toilet
- TV
- Towels

First supply

- Toilet paper
- Fridge filling on request

Kitchen

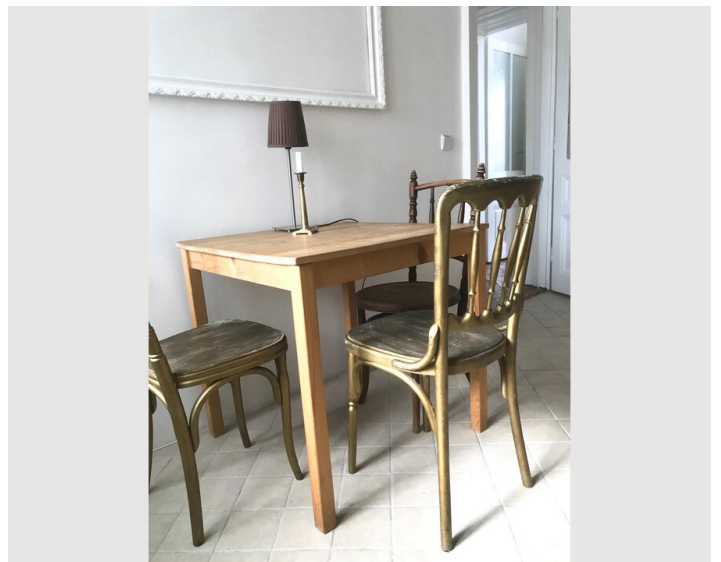
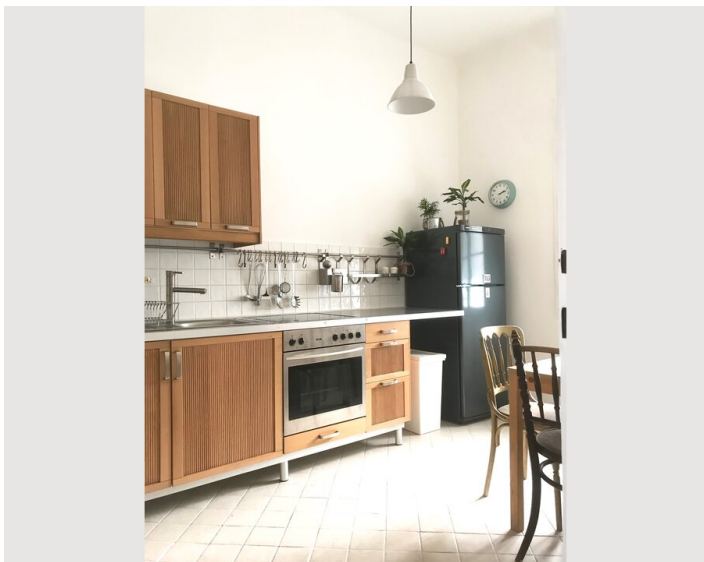
- Private kitchen
- Filter coffee
- Glasses/Tableware

Informations

- Smoking not allowed
- Private entrance
- Regular cleaning at extra cost
- Short-term parking zone subject to a charge
- Pets on request

Picture gallery









Infrastructure

 S-Train Station "Rennweg"

Only 1 block to the s-train station "Rennweg"

The trains from the west "Westbahn" stops there.

A directly connection with the train S7 to the airport in 20 minutes.

Other direction by s-train you are at "Landstrasse Vienna city center" where U3 and U4.

You can go easily to "Schönbrunn" and "Stephansplatz"

Palais Belvedere is nearby and you can walk in 10 minutes to Schwarzenbergplatz and the 1.district where almost all sight from Vienna are.

Location

