

3 ROOM APARTMENT, 5400 HALLEIN

Spacious apartment in Hallein

Object number: MONH1

[View and rent online](#)

Period	27/06/ - 27/07/2026
Number of persons	2
Total incl. VAT.	€ 2.935,92
Deposit	€ 2.200,00

Lots of space for 4 people. New furniture and furnishings in June 2020.
TV in all 3 rooms.



Living space

125m²



Maximum occupancy

4 Persons



Complete accommodation [?]

1 private bathroom 2 Separated bedrooms



Ground floor



Check-in

12:00 - 20:00



Check-out

10:00 - 12:00

Sleeping options

Bedroom 1



1x Double bed (min. 1,80 m x
2 m)

Bedroom 2



2x Single bed

Descripton of accommodation

Small terrace for grilling or chilling right on the Alpbach. Romantic brook noise included.

Equipment & Features



Basic equipment

- Balcony
- TV
- Bedclothes
- Private toilet
- Vacuum cleaner
- Hairdryer
- Internet/Wifi
- Private washing machine
- Towels
- Private parking space
- Cleaning utensils



First supply

- Toilet paper
- Soap
- Fridge filling on request



Kitchen

- Private kitchen
- Cooking utensils
- Glasses/Tableware
- Dishwasher

Informations

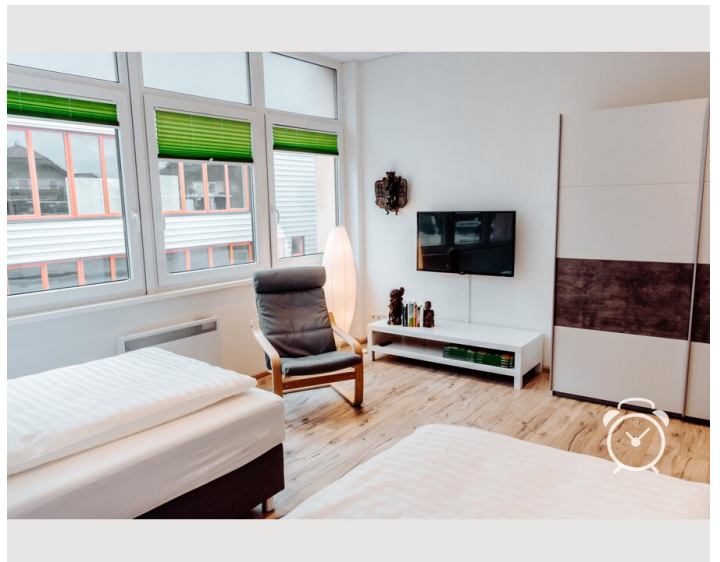
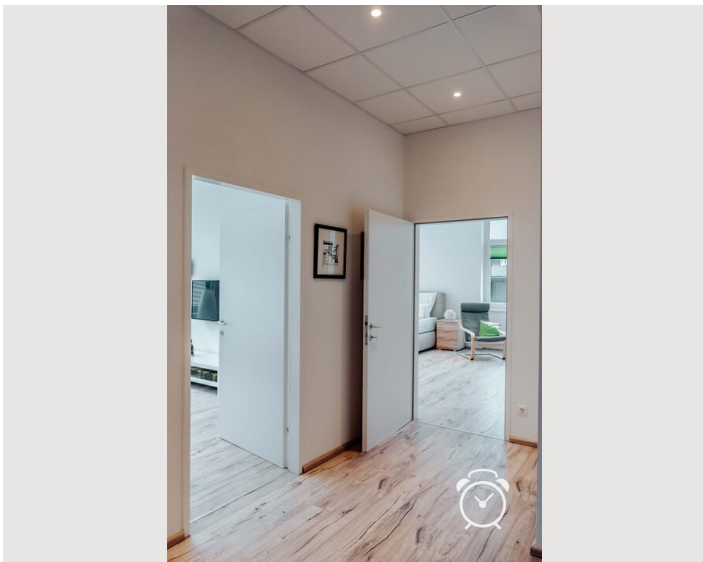
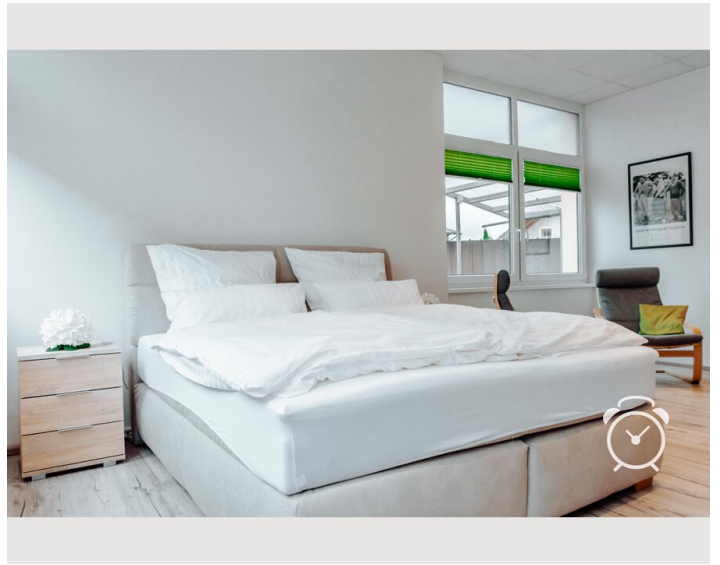
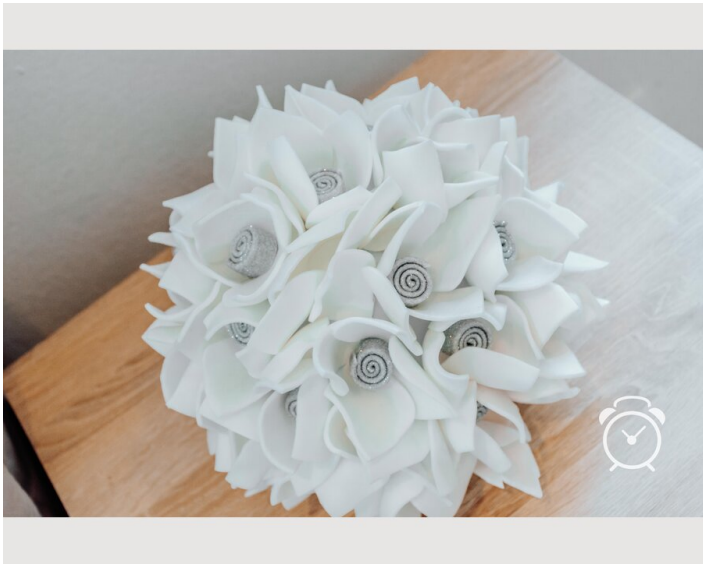
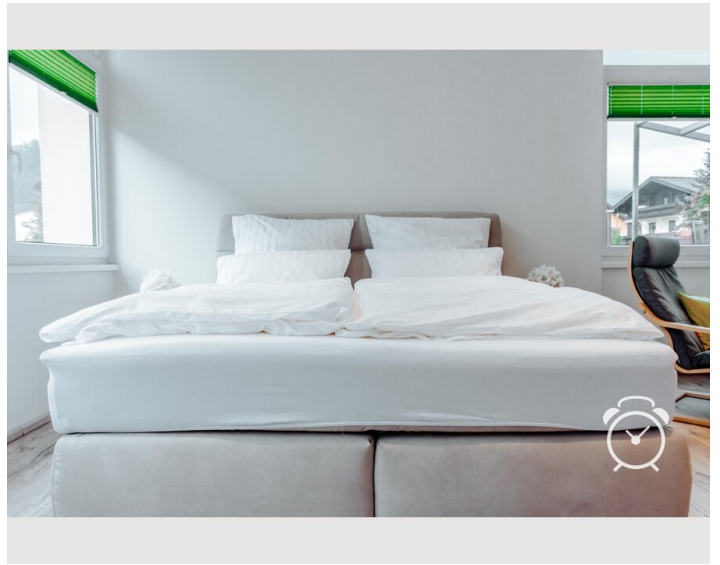
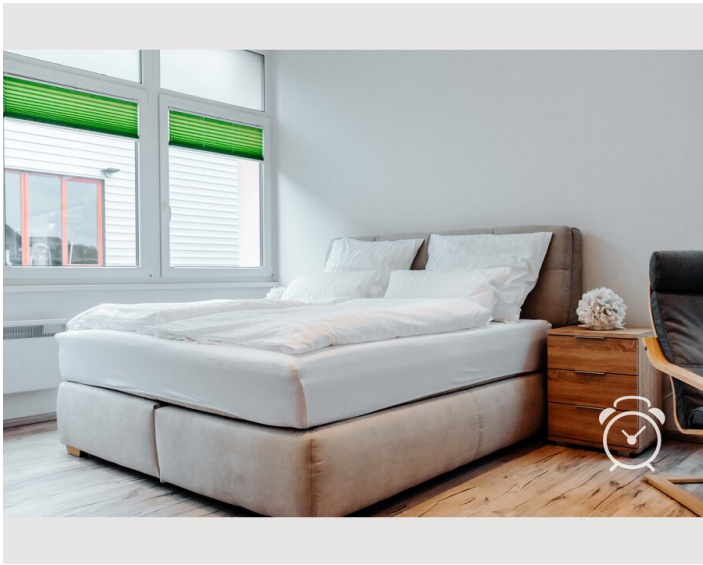
- Suitable for construction workers
- Suitable for children
- Smoking not allowed
- Desk/Workplace
- Private entrance
- Pets on request
- Regular cleaning at extra cost

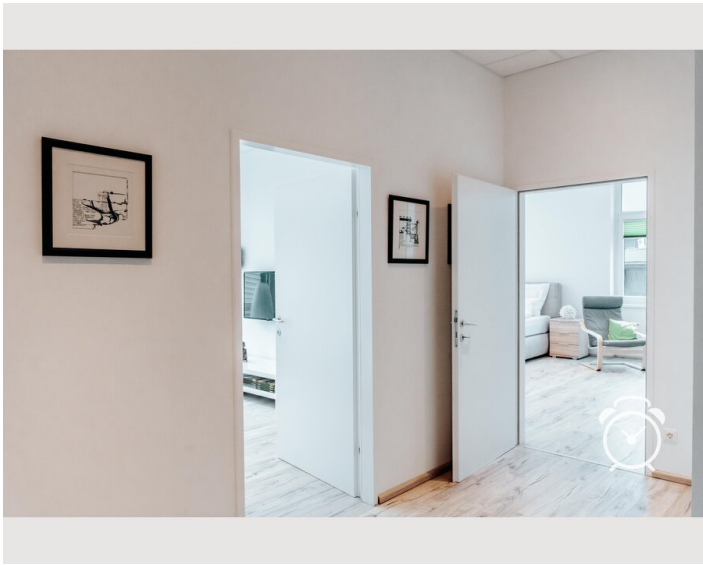
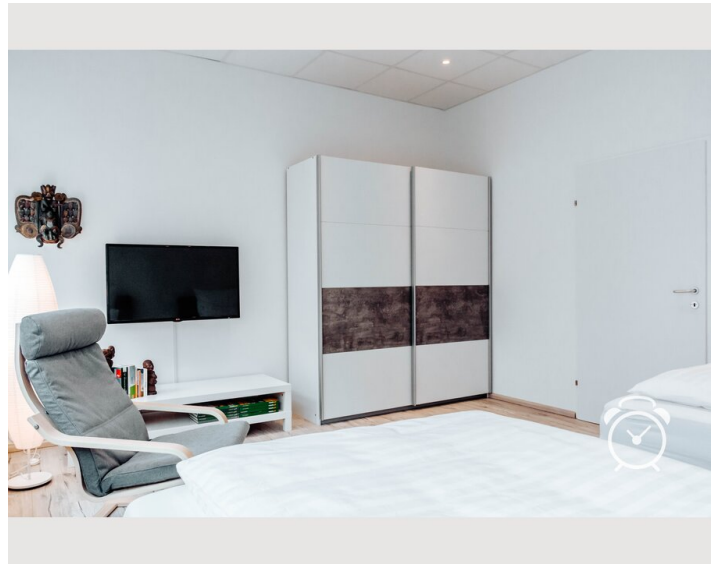
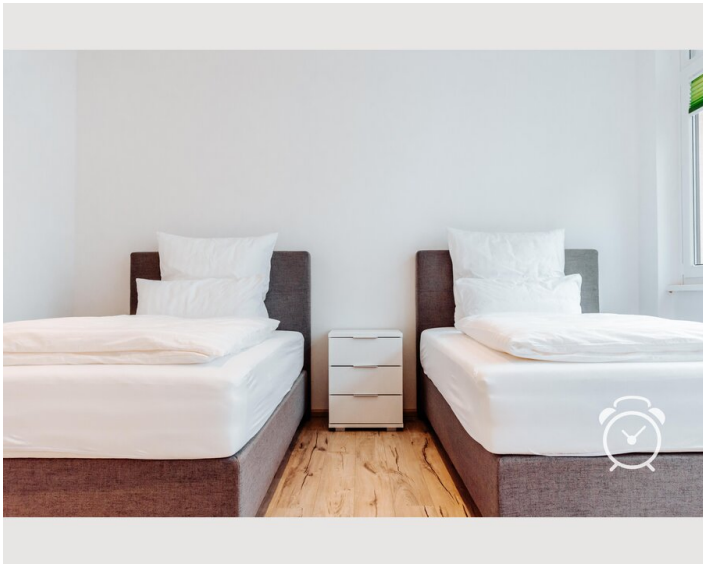
Additional services

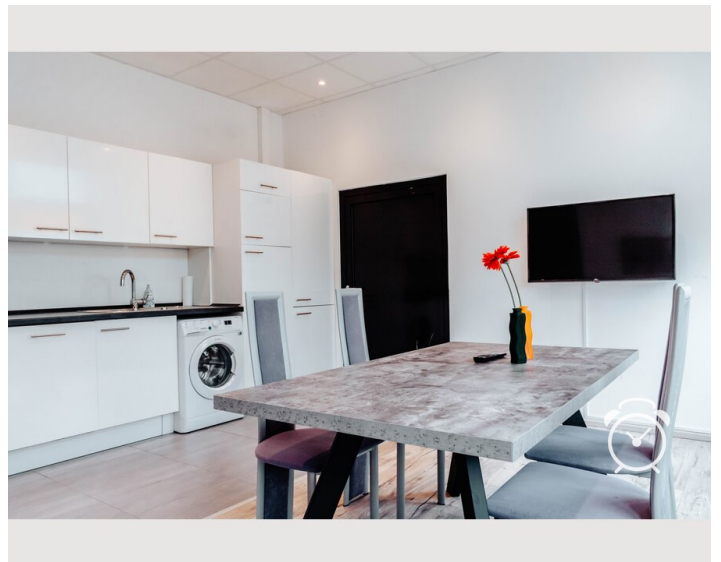
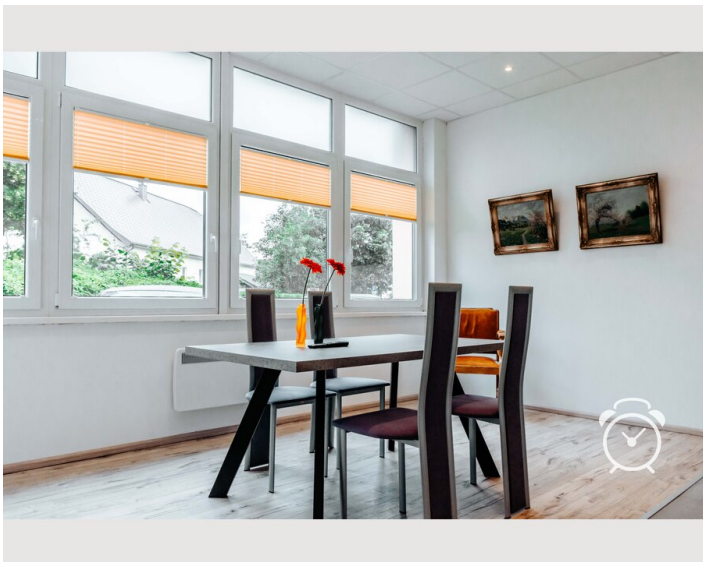
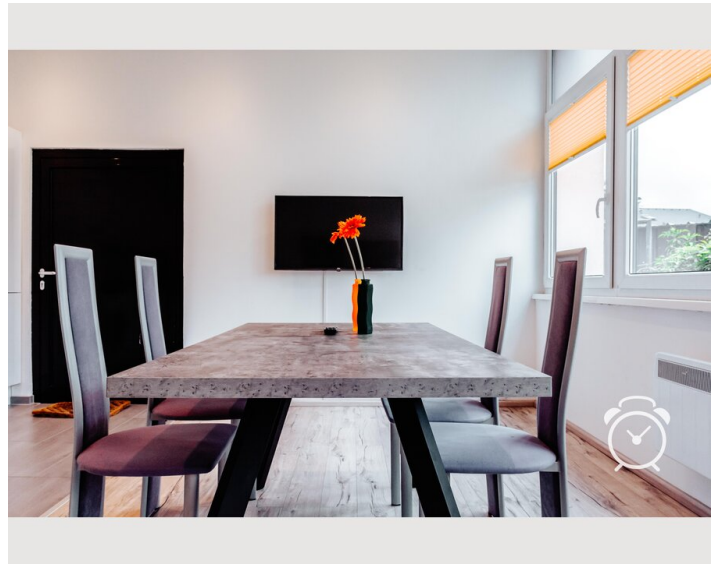
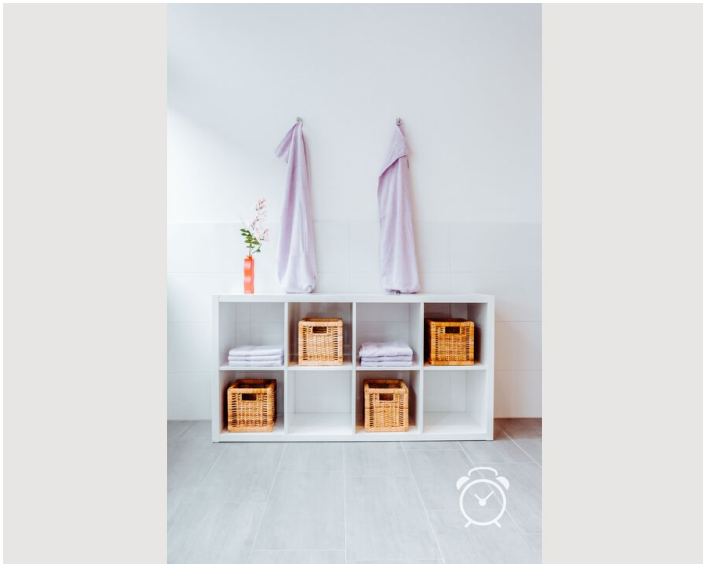
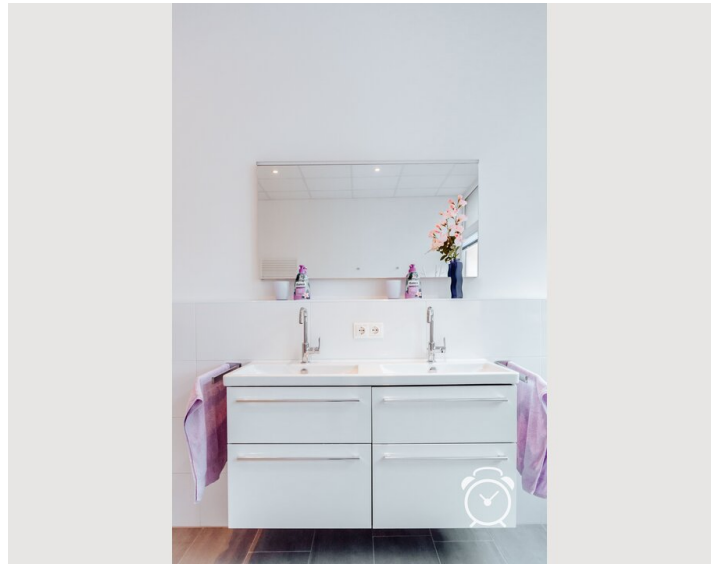
- weekly cleaning (€ 80,00)
- weekly change of towels (€ 40,00)
- Change of bed linen (€ 30,00)

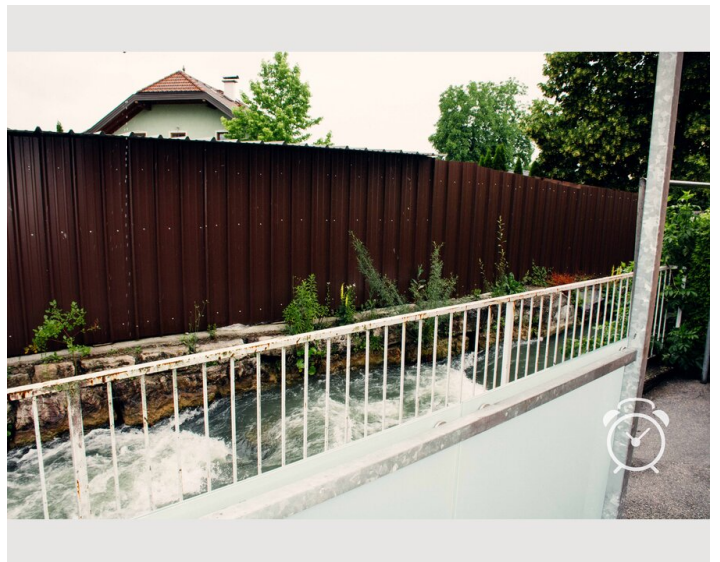
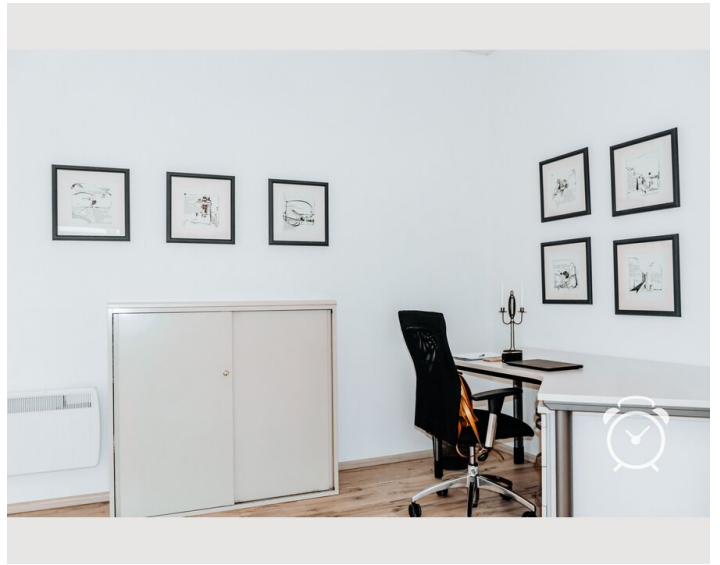
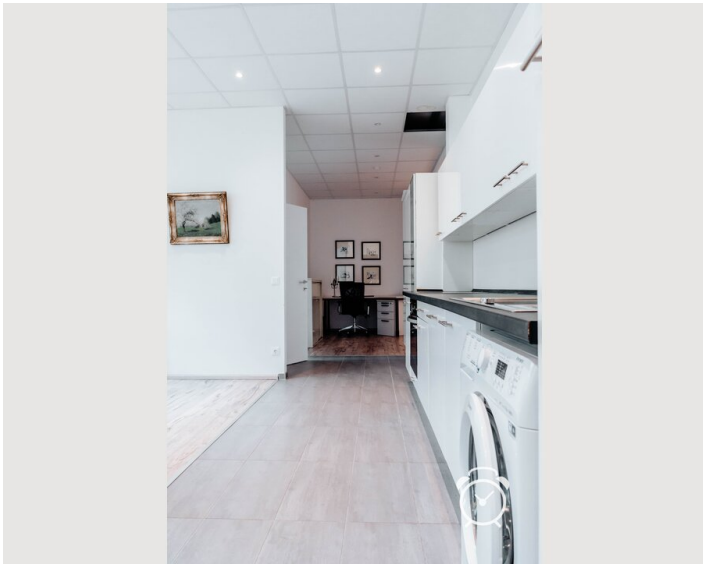
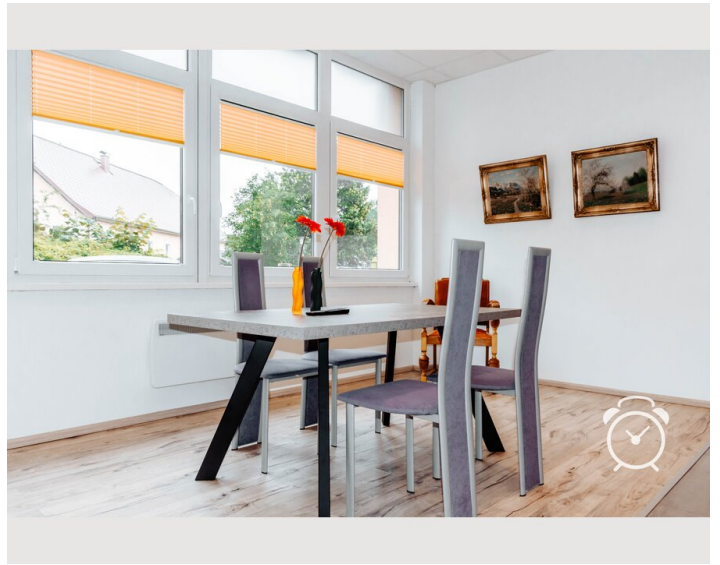
All prices are gross per month - billing is done directly with the lessor.

Picture gallery













Infrastructure

 50 m

 20 minutes by car

 150 m

 Hallein 5 minutes, Salzburg 30 minutes

 10 minutes on foot

The apartment is very conveniently located, short distances to Hallein and Salzburg. All shops easily accessible. Connected directly to bike paths.

Location

