



2 ZIMMER WOHNUNG, 5020 SALZBURG

Bright & Spacious Attic

Object number: SCHE5

[View and rent online](#)

This lovingly furnished apartment on the top floor of our house is the perfect accommodation for up to 4 people.

Period	27/06/ - 27/07/2026
Number of persons	2
Total incl. VAT.	€ 1.624,14
Deposit	€ 1.300,00



Living space

70m²



Maximum occupancy

4 Persons



Complete accommodation [?]

1 private bathroom 1 Separated bedroom 1 Living-Sleepingroom



2. floor



Check-in

16:00 - 22:30



Check-out

07:30 - 10:30

Sleeping options

Sleeping room



1x Double bed (min. 1,60 m x
2 m)

Living and sleeping



1x Double bed (min. 1,60 m x
2 m)



1x Sofa bed (2 persons)

Descripton of accommodation

Our spacious and very bright, fully furnished 2-room apartment is located near the Glan and a 10-minute walk away from the Salzach. It is located away from the big streets in a quiet residential area and is still very close to the center. The exhibition center is very easy to reach on foot. The beautifully designed green areas next to Glan and Salzach and the area around the Salzach Lakes invite you to go for a walk and relax. Those who want to take a longer walk can hike to the Maria Plain pilgrimage church and have a wonderful view of the whole of Salzburg from there.

Due to the proximity to the bike path network along the Salzach, the bike is an ideal means of transport. Those who prefer to use the bus will find two stops 200 m and 400 m away. It takes about 15 minutes to reach the city center and 10 minutes to reach the train station. The Mitte motorway exit is only a 2-minute drive away. The nearest supermarket can be reached on foot in 5 minutes.

The apartment is on the top floor of our house and covers 70 m².

Furnishing:

Open kitchen / dining area; Kitchen is equipped with a stove, fridge, coffee machine, a full complement of cooking and eating utensils and a pull-out dining table,

Roof terrace with a wonderful view of the mountains,

Bathroom with shower and bathtub, separate toilet

Large living room with sleeping area separated by sliding wall, sleeping places for 2 people in the sleeping area and another 2 people on the pull-out couch

another bedroom with double bed (1.60 m wide)

Washer and dryer are available in the basement of the house.

WiFi and TV are available in the apartment,

Bed linen and towels are provided. Parking for one car in front of the house can be provided. A bicycle can also be provided on request. Bicycle or motorcycle storage space is available in the garage.

The owner of the house lives on the ground floor and is happy to help with all questions of everyday life.

Equipment & Features

Basic equipment

- Balcony
- TV
- Dryer
- Towels
- Private parking space
- Internet/Wifi
- Community washing machine
- Bedclothes
- Private toilet
- Hairdryer

First supply

- Toilet paper
- Soap

Kitchen

- Private kitchen
- Glasses/Tableware
- Coffee machine
- Dishwasher

Informations

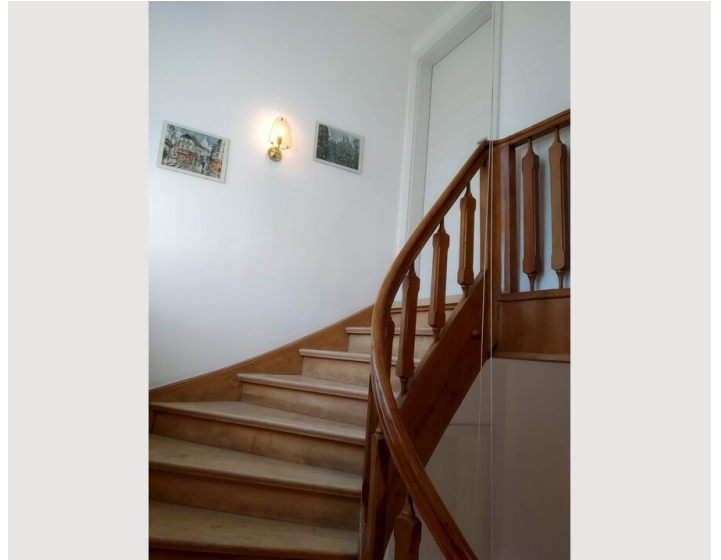
- Suitable for construction workers
- Smoking not allowed
- Regular cleaning at extra cost
- Suitable for children
- Pets forbidden
- Bicycle room free of charge

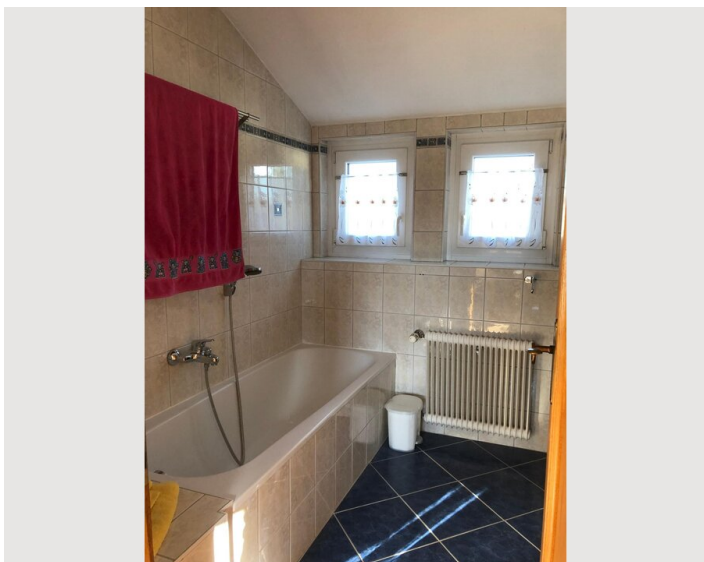
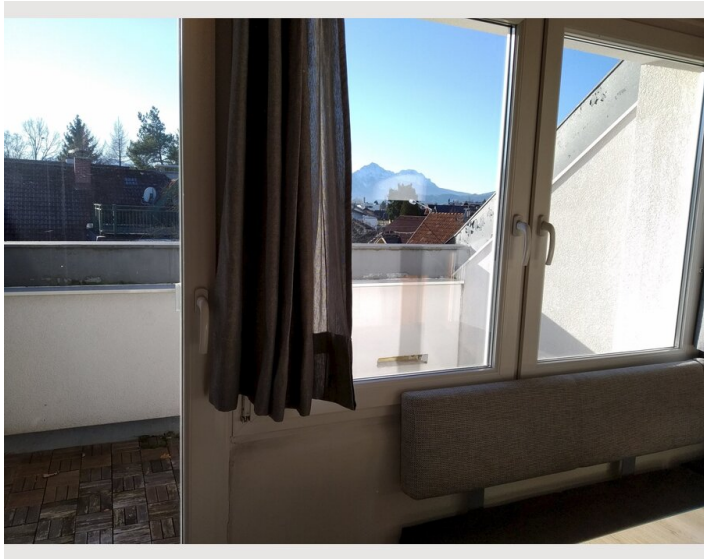
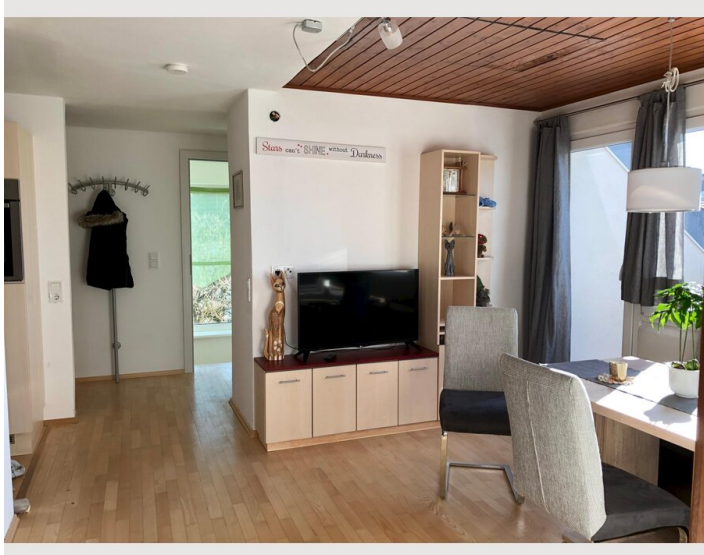
Additional services

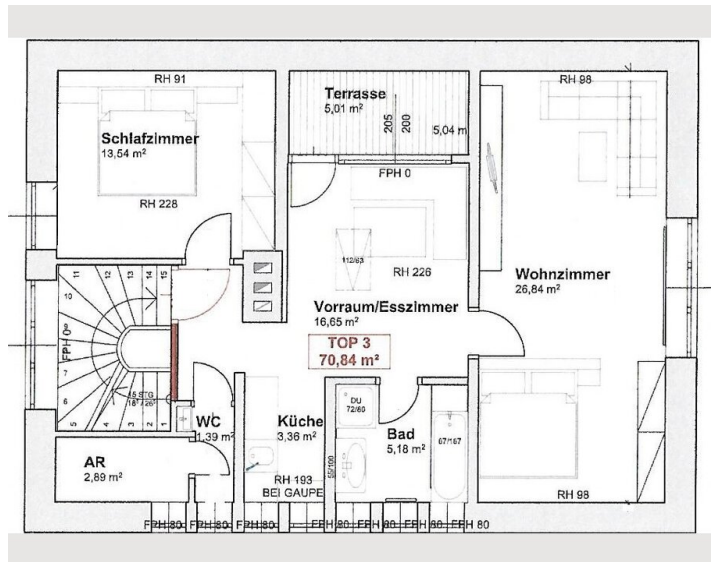
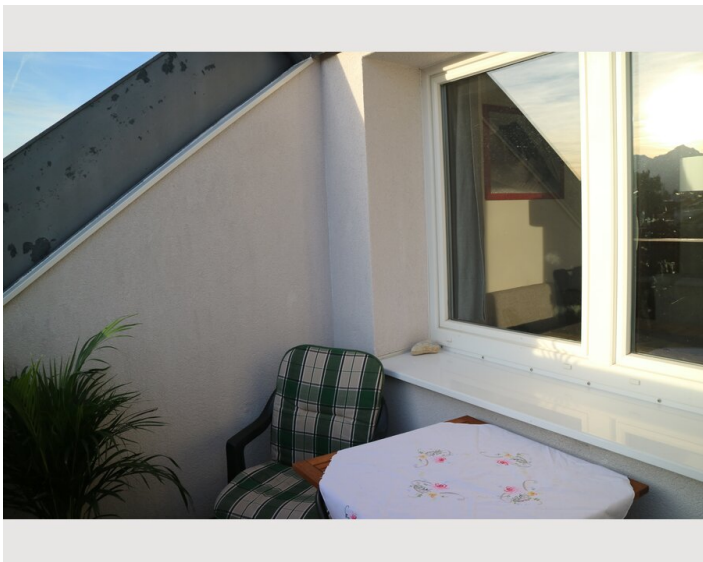
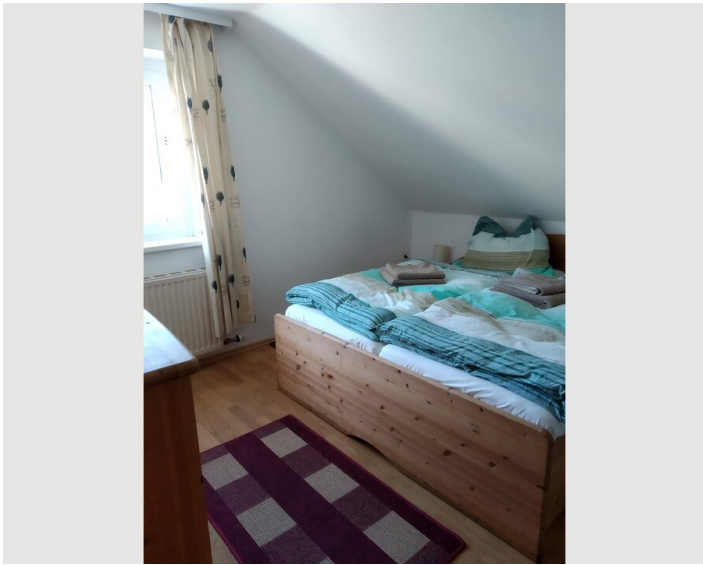
- Regular cleaning

All prices are gross per month - billing is done directly with the lessor.


Picture gallery











Infrastructure

 Line number 7 in the directions Centre and Salzach Lakes, 2 minutes on foot

 Airport, 15 minutes by car

 Main station, 25 min on foot, 15 minutes by bus, 10 minutes by car

 grocery store, 5 minutes on foot

 city centre, 30 minutes on foot, 15 minutes by bus

all necessary infrastructure facilities are within walking distance: grocery stores, bakeries (also open on Sundays), drugstore, pharmacy, flower shop, several hairdressers, hospital and library, The fair is easily accessible both by bus and on foot. Along the Glan you can reach the Salzach, which leads towards the center with a walking/cycling path. In the other direction, you can easily get to the local recreation area Salzach Lakes with swimming, mini golf and extensive opportunities for walks. The pilgrimage church Maria Plain can be reached on foot in about 1 hour. From there you have a wonderful view of the entire city of Salzburg.

Location

