



3 ZIMMER WOHNUNG, 1030 WIEN

## SPACIOUS AND EXTRAORDINARY VIENNA APARTMENT

Objektnummer: WALM1

[Online ansehen und mieten](#)

Welcome to beautiful Vienna! Are you traveling with several people to explore Vienna together? Then my apartment is just the right place for you! My large, lovingly furnished apartment has enough room for your friends and family.

<b>Zeitraum</b>	30.10. - 30.11.2025
<b>Personenanzahl</b>	2
<b>Gesamtbetrag</b> inkl. Ust.	€ 1.982,00
Kaution	€ 1.500,00

 **Wohnfläche**  
90m<sup>2</sup>

 **Maximalbelegung**  
4 Personen

 **Gesamte Unterkunft**   
1 privates Badezimmer 1 getrenntes Schlafzimmer 1 Wohn-Schlafzimmer

 **3. Stockwerk**  
Lift vorhanden

 **Check-in**  
15:00 - 20:00 Uhr

 **Check-out**  
15:00 - 20:00 Uhr

## Schlafmöglichkeiten

### Schlafzimmer



1x Doppelbett (min. 1,80 m x  
2 m)

### Wohnen und Schlafen



1x Doppelbett (min. 1,40 m x  
2 m)

## Beschreibung zur Unterkunft

Welcome to beautiful Vienna! Are you travelling with several people to explore Vienna together? Then my apartment is just the right place for you! My large, lovingly furnished apartment has enough room for your friends and family. If the weather is nice, you can go for a walk together in the closely located Belvedere Garden or have a cosy and tasty picnic. Highlight of my apartment is the billiard table, where you can spend a lovely evening!

1. Easy personal check-in with a warm welcome
2. High quality hotel style bed linen, towels and toiletries available
3. Key Amenities:  
Wi-Fi, Smart TV, Coffee machine, Hair dryer, Microwave, Electric kettle, iron
4. Beds and their sizes:
  - 1 Double bed (140x200cm)
  - 1 King size bed (180x200cm)
  - 1 Sofa
5. Elevator access
6. Public parking

--- MORE ABOUT THE APARTMENT ---

Bedroom:

- 1 King size bed (180x200cm)
- In the bright spacious bedroom you can store your private things.

Living space/dining area:

- 1 Double bed (140x200cm)
- 1 Sofa (sleeping sofa)
- Have a fun evening with games or films in the large living area.
- You can also play billiards with your friends in the room next door.

Kitchen:

- Feel free to use my kitchen equipment to cook and prepare delicious meals.

Bathroom:

- Bright bathroom, the toilet is separate.

During your stay, you'll have access to the whole apartment. In addition, you will have your own personal key for the apartment and the main entrance to make sure that your stay goes well.

Main entrance and exit of the apartment are common among all the residents.

--- TOP DESTINATIONS OF THE CITY ARE HERE FOR YOU ---

1. Apartment -> St. Stephen's Cathedral:

A 10-minute walk to the station Rochusgasse -> Underground line U3 direction Wien Ottakring -> Stop: Stubentor -> A 2-minute walk to St. Stephen's Cathedral

Duration: 15 minutes

2. Apartment -> Heuriger 10er Marie:

A 10-minute walk to the station Rochusgasse -> Underground line U3 direction Wien Ottakring -> Stop: Ottakring -> A 6-minute walk to Heuriger 10er Marie

Duration: 34 minutes

3. Apartment -> Belvedere Palace:

A 5-minute walk to the station Wien Rennweg Bahnhof -> Suburban line S1 direction Wien Meidling Bahnhof -> Stop: Wien Quartier Belvedere Bahnhof -> A 8-minute walk to Belvedere Palace

Duration: 15 minutes

OTHER THINGS TO NOTE

- Smart TV available
- Netflix and Amazon Prime available
- Coffee machine, electric kettle available
- Billardtable available

--- A LITTLE GUIDE FOR YOU ---

1. Airport -> Apartment:

Airport Wien-Schwechat -> A 12-minute walk to the station Flughafen Wien Bahnhof -> Suburban line S7 direction Wolkersdorf im Weinviertel Bahnhof -> Stop: Wien Rennweg Bahnhof -> A 4-minute walk to the apartment

Duration: 38 minutes

2. Main station -> Apartment:

Wien Hauptbahnhof -> Suburban line S1 direction Gänserndorf Bahnhof -> Stop: Wien Rennweg Bahnhof -> A 4-minute walk to the apartment

Duration: 8 minutes

3. Apartment -> Fair:

A 5-minute walk to the station Wien Rennweg Bahnhof -> Suburban line S3 direction Korneuburg Bahnhof -> Stop: Wien Praterstern -> A 1-minute walk to the underground station Praterstern -> Underground line U2 direction Wien Seestadt -> Stop: Messe-Prater -> A 6-minute walk to Messe Wien

Duration: 26 minutes

4. Mobile apps/Websites:

DB Navigator app

ÖBB App

WienMobil app

## Ausstattung & Merkmale

### Grundausstattung

- Internet/Wlan
- TV
- Bettwäsche
- private Toilette
- Bügeleisen & Bügelbrett
- Haartrockner
- Musikanlage/Dockingstation
- Private Waschmaschine
- Handtücher
- Staubsauger
- Reinigungsutensilien

### Erstversorgung

- Toilettenpapier
- Seife
- Shampoo
- Nespressokapseln

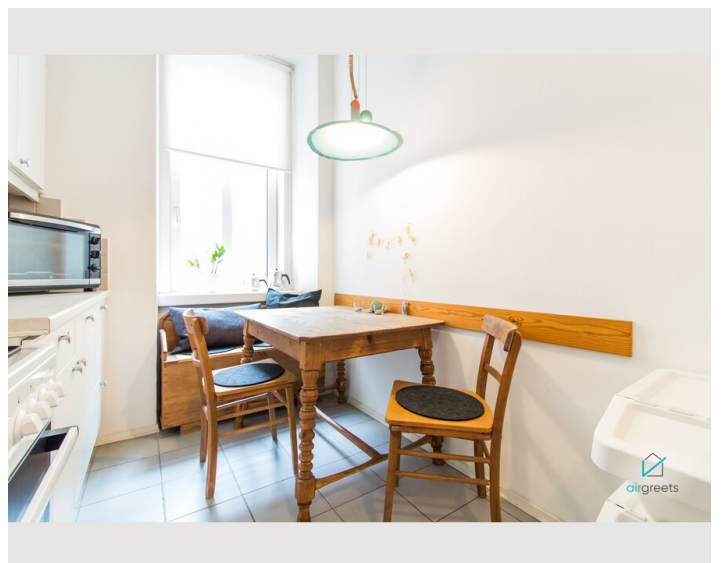
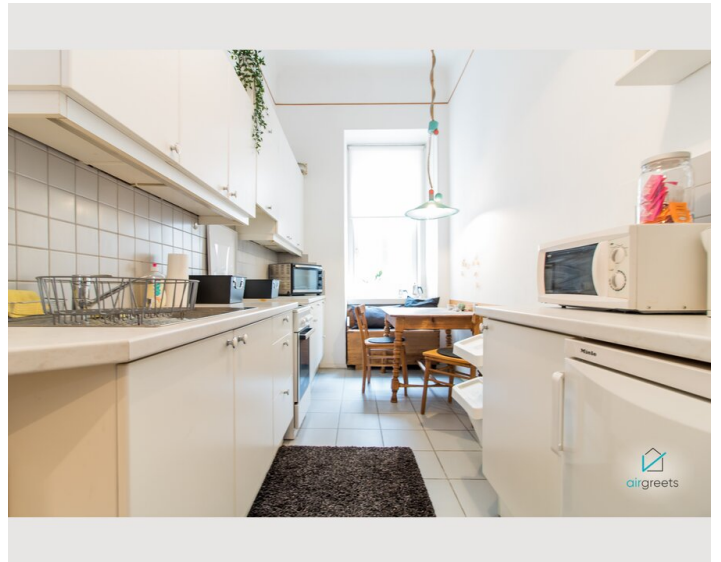
### Küche

- Eigene Küche
- Gläser/Geschirr
- Geschirrspüler
- Kochutensilien
- Espressomaschine
- Mikrowelle

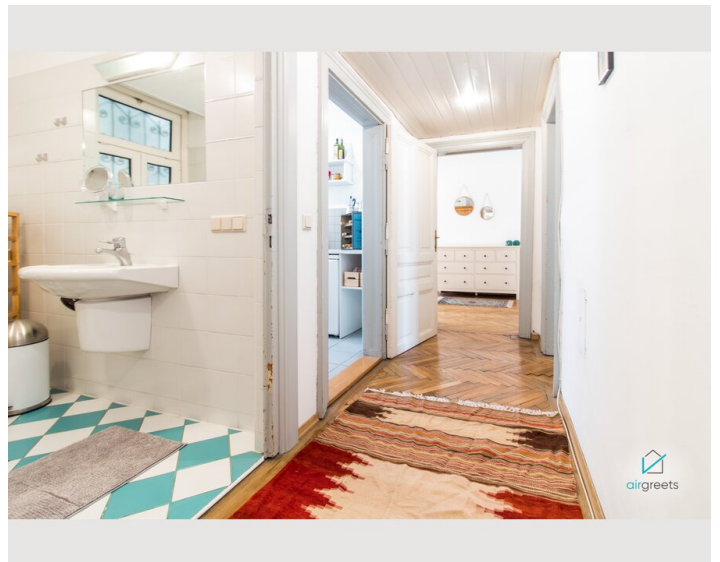
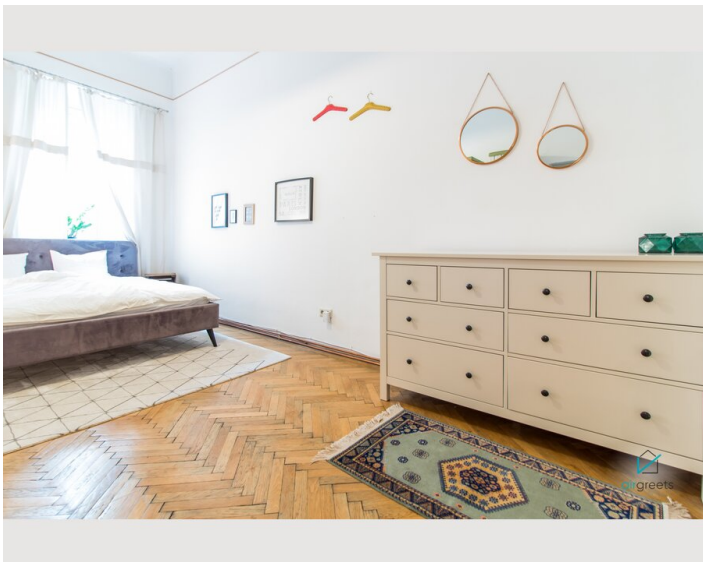
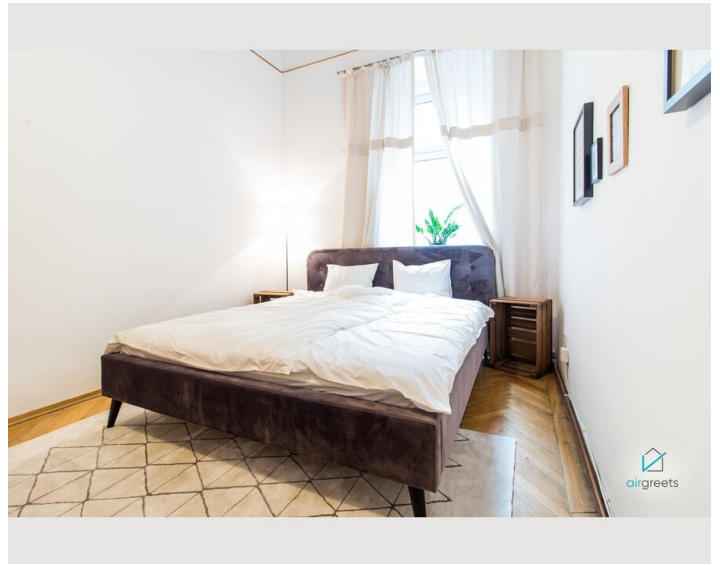
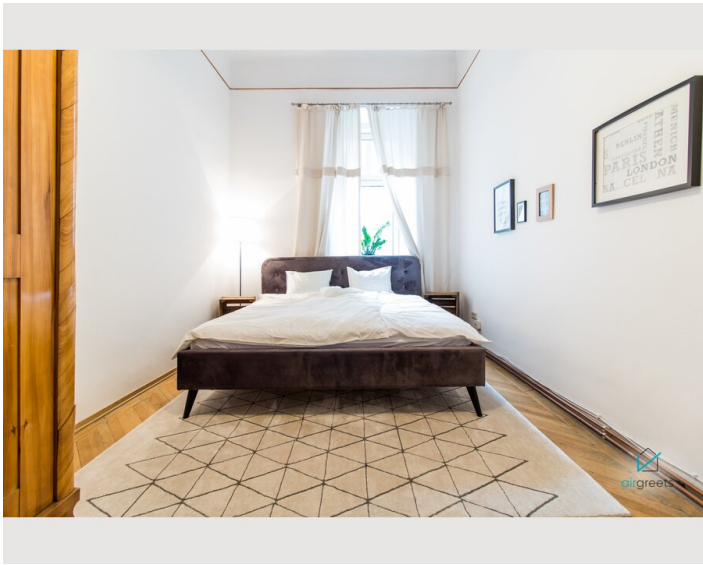
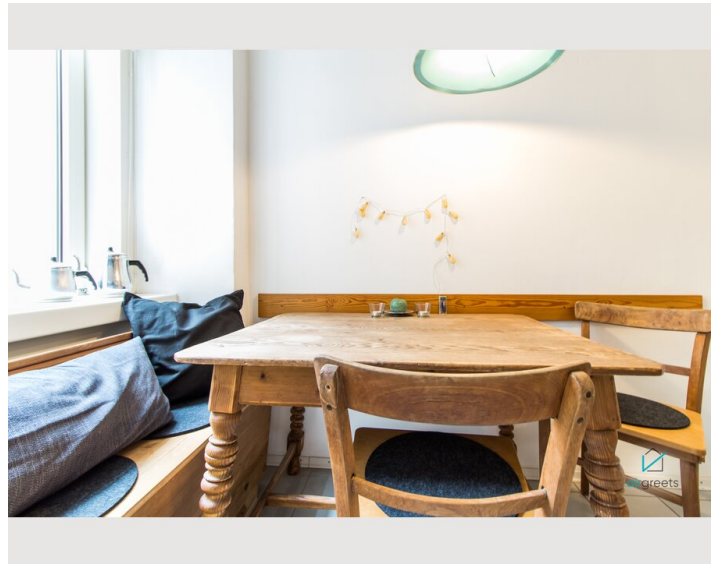
## Informationen

- Für Kinder geeignet
- Kurzparkzone kostenpflichtig
- Haustiere auf Anfrage
- Fahrradraum kostenlos
- Rauchen verboten
- Privater Eingang
- Regelmäßige Reinigung kostenpflichtig

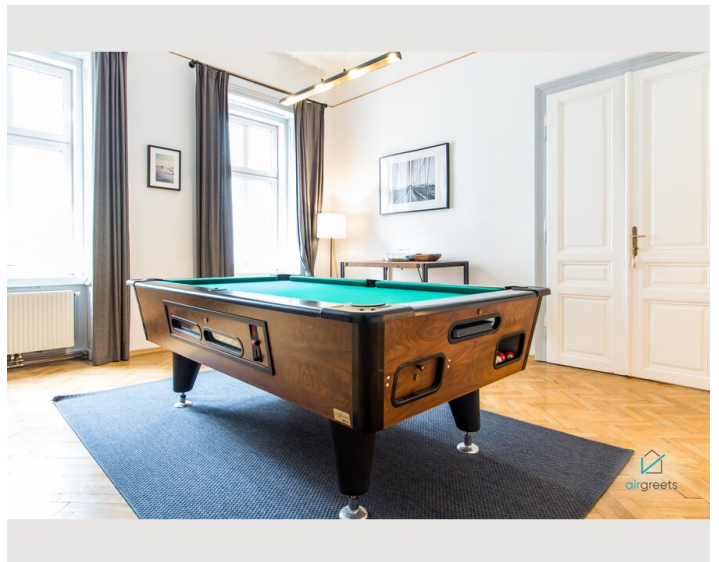
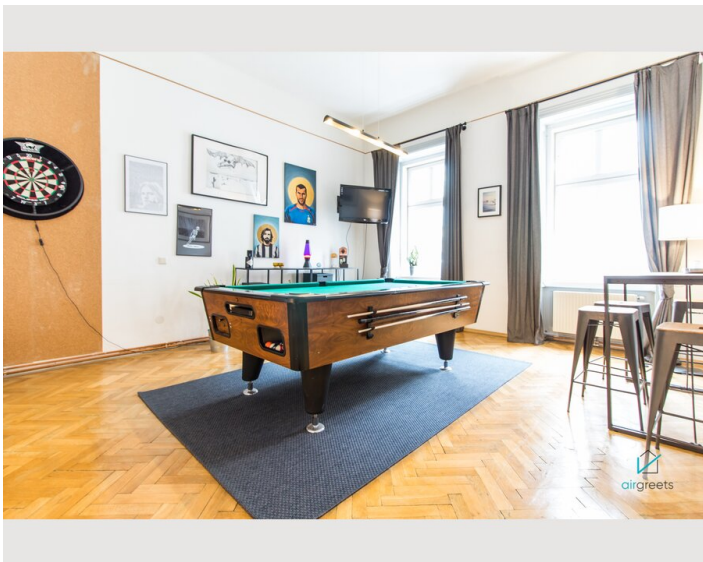
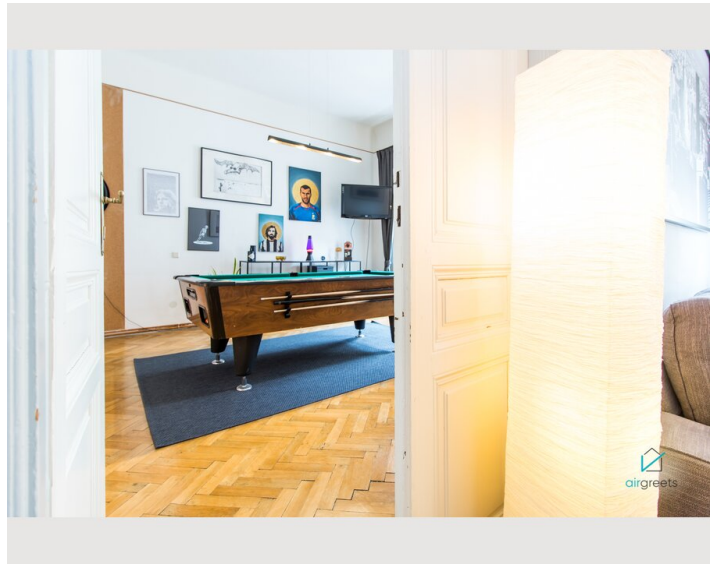
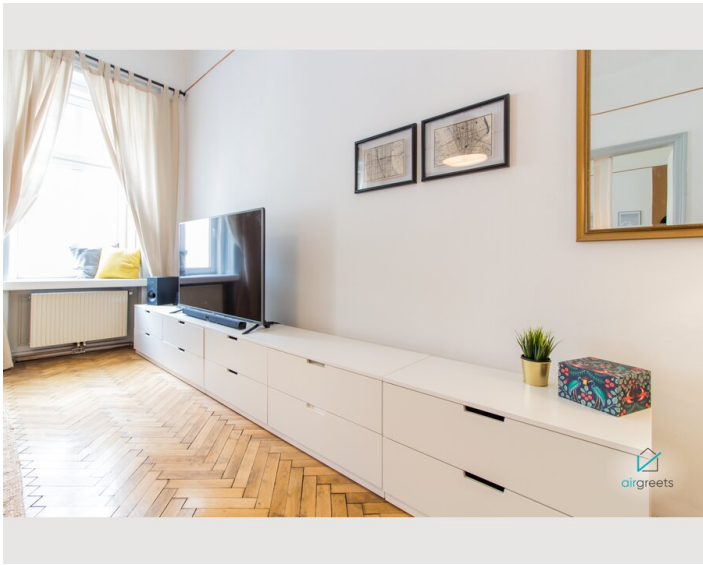
## Bildergalerie



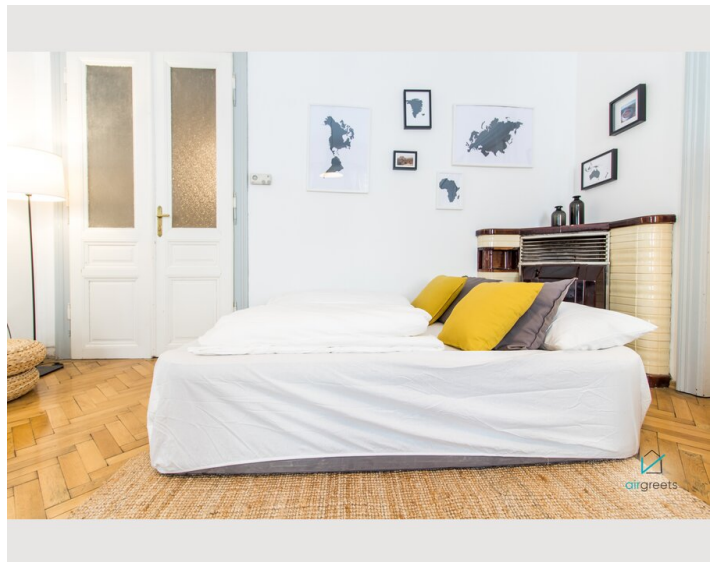
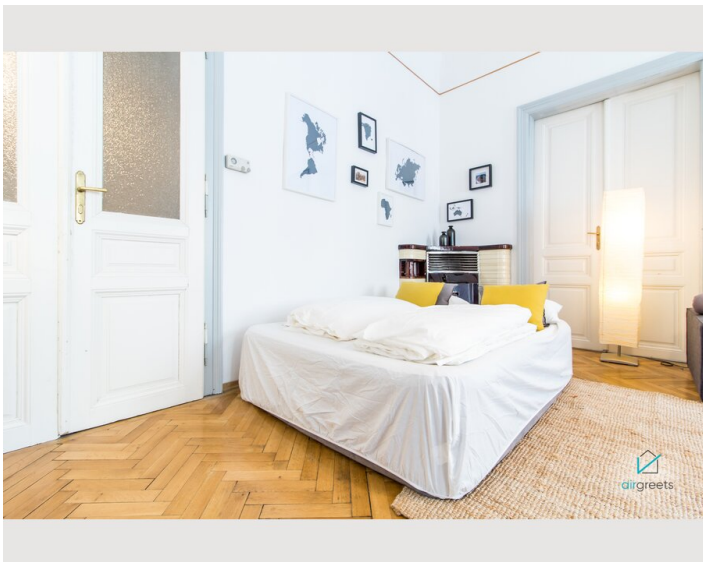
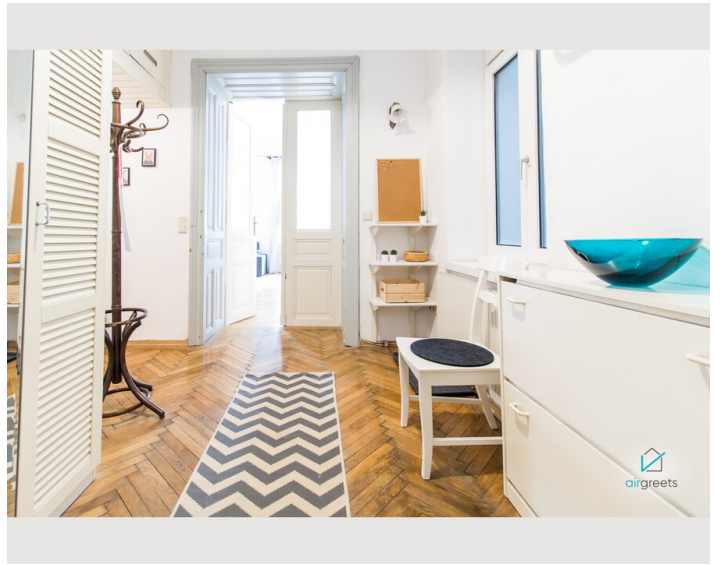
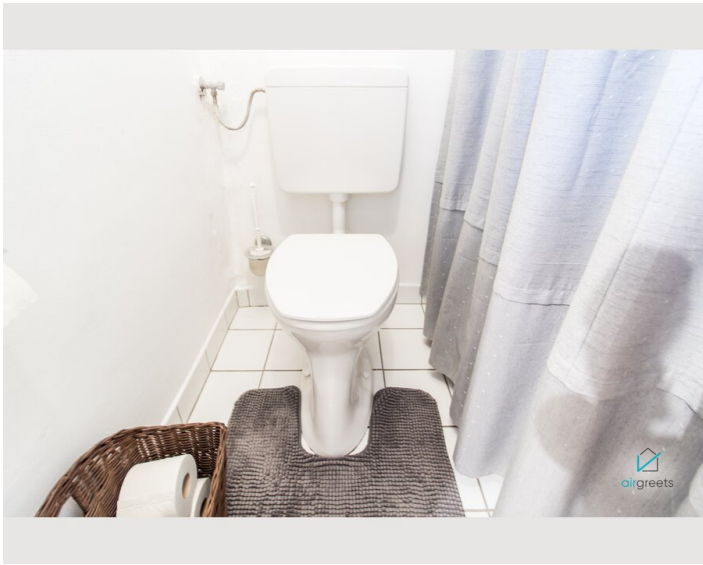
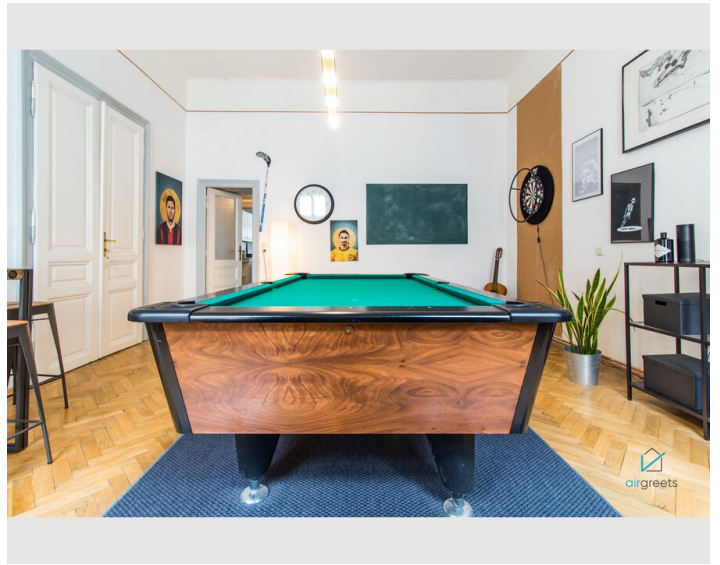
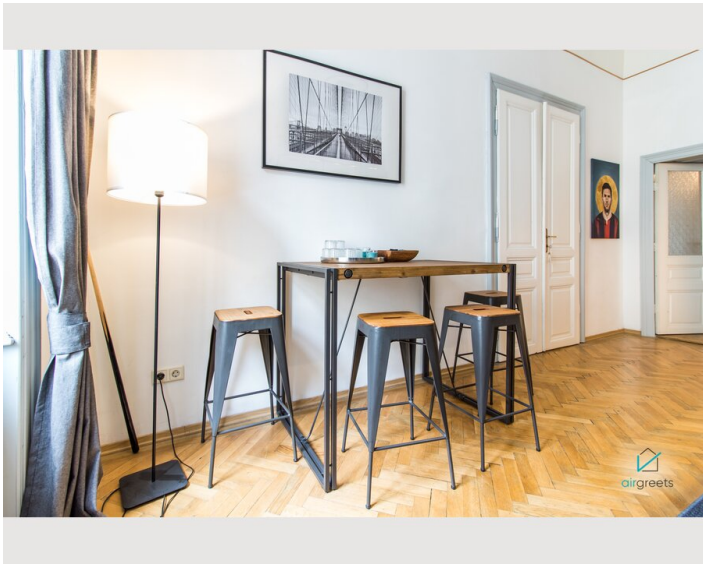














## Infrastruktur



### 1. Apartment -> St. Stephen's Cathedral:

A 10-minute walk to the station Rochusgasse -> Underground line U3 direction Wien Ottakring -> Stop: Stubentor -> A 2-minute walk to St. Stephen's Cathedral

Duration: 15 minutes

### 2. Apartment -> Heuriger 10er Marie:

A 10-minute walk to the station Rochusgasse -> Underground line U3 direction Wien Ottakring -> Stop: Ottakring -> A 6-minute walk to Heuriger 10er Marie

Duration: 34 minutes

### 3. Apartment -> Belvedere Palace:

A 5-minute walk to the station Wien Rennweg Bahnhof -> Suburban line S1 direction Wien Meidling Bahnhof -> Stop: Wien Quartier Belvedere Bahnhof -> A 8-minute walk to Belvedere Palace

Duration: 15 minutes

## Lage

